

WAAS CH 40306 W36A	APP CRS 004°	Rwy Idg 5002 TDZE 829 Apt Elev 842
--	------------------------	---

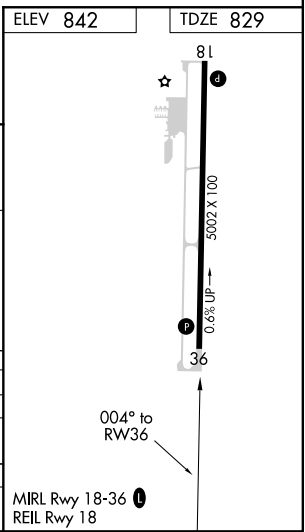
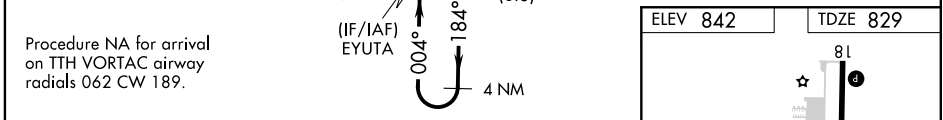
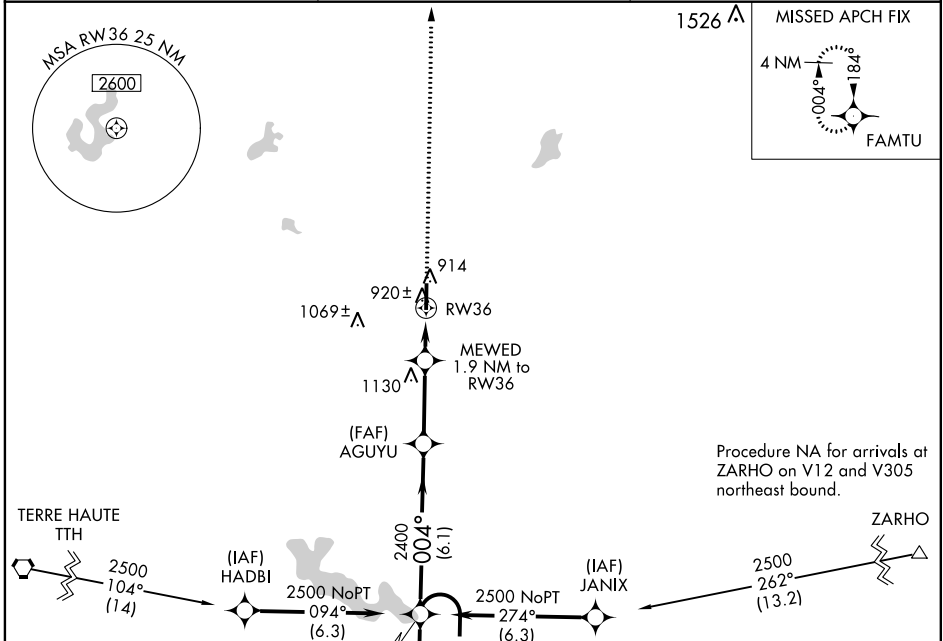
RNAV (GPS) RWY 36

PUTNAM COUNTY RGNL (GPC)

▼ For uncompensated Baro-VNAV systems, LNAV/VNAV NA below -16°C (4°F) or above 54°C (130°F). DME/DME RNP-0.3 NA.

MISSED APPROACH: Climb to 2500 direct FAMTU and hold.

AWOS-3PT 118.125	INDIANAPOLIS APP CON 119.05 317.8	UNICOM 122.8 (CTAF) ①
----------------------------	---	---------------------------------



CATEGORY	A	B	C	D
LPV DA		1079- $\frac{7}{8}$	250 (300- $\frac{7}{8}$)	
LNAV/VNAV DA		1116-1	287 (300-1)	
LNAV MDA		1180-1	351 (400-1)	
CIRCLING	1280-1 438 (500-1)	1400-1 558 (600-1)	1480-1 $\frac{3}{4}$ 638 (700- $\frac{3}{4}$)	1480-2 638 (700-2)

EC-2, 16 JUN 2022 to 14 JUL 2022

EC-2, 16 JUN 2022 to 14 JUL 2022