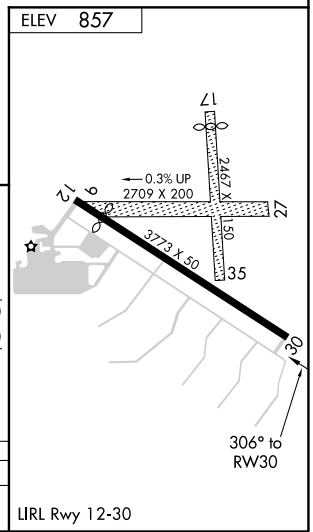
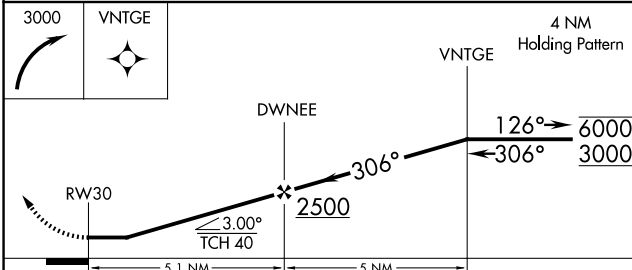
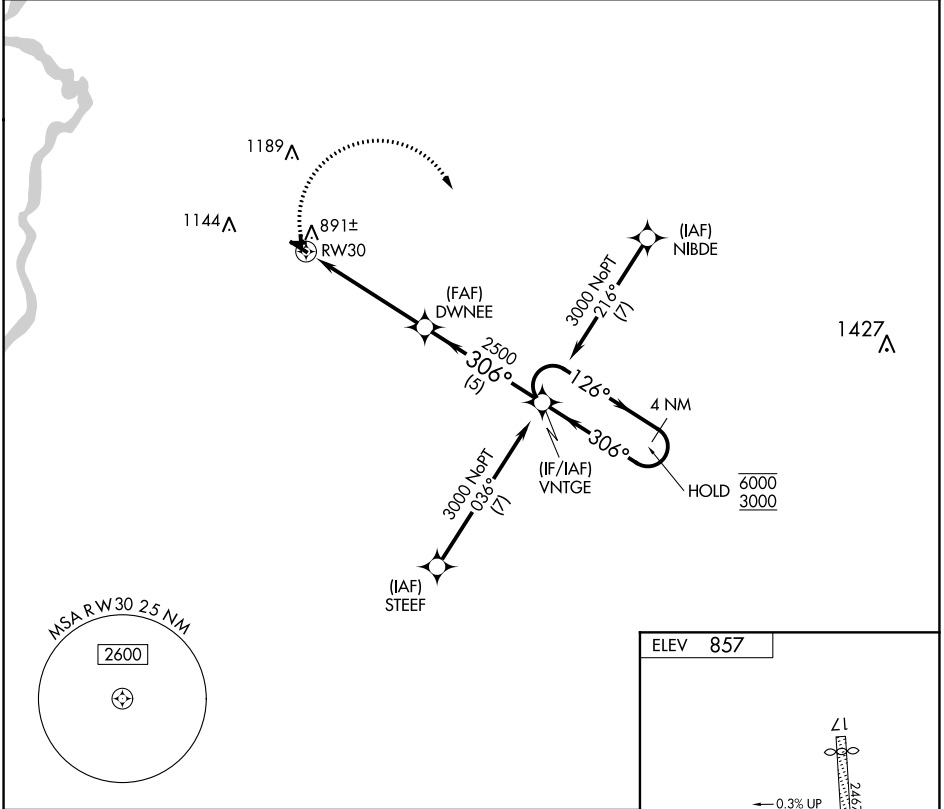


APP CRS	Rwy Idg	N/A
<b>306°</b>	TDZE	N/A
	Apt Elev	<b>857</b>

# RNAV (GPS)-A

POPLAR GROVE (C77)

RNP APCH - GPS.		MISSED APPROACH: Climbing right turn to 3000 direct VNTGE and hold.
<p><b>▼</b> Circling NA to Rwy 09, 17, 27 and 35. Procedure NA at night.</p> <p><b>▲</b> NA Rwy 12 and 30 helicopter visibility reduction below 1 SM NA. Use Chicago/Rockford altimeter setting.</p>		
RFD ASOS <b>127.6</b>	ROCKFORD APP CON <b>121.0 327.0</b>	UNICOM <b>122.8 (CTAF)</b>



CATEGORY	A	B	C	D
<b>C</b> CIRCLING	1380-1	523 (600-1)	1560-2 703 (800-2)	NA

EC-3, 16 JUN 2022 to 14 JUL 2022

EC-3, 16 JUN 2022 to 14 JUL 2022