

WAAS CH 50500 W25A	APP CRS 246°	Rwy Idg TDZE Apt Elev	4700 10 11
--	------------------------	-----------------------------	---------------------------------------

RNAV (GPS) RWY 25

NEW SMYRNA BEACH MUNI (EVB)

RNP APCH.

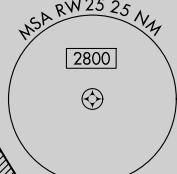
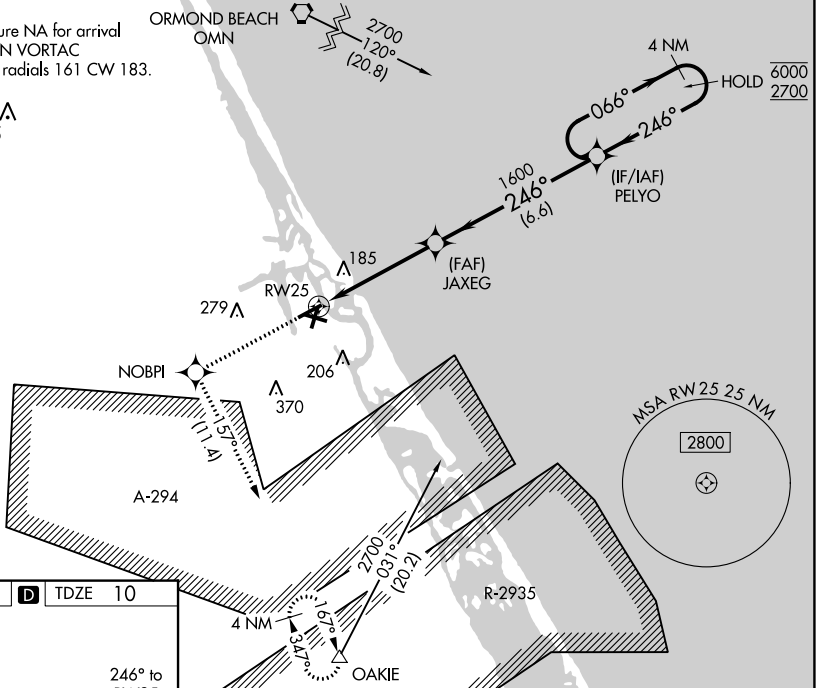
▼ Rwy 25 helicopter visibility reduction below 1 SM NA. Straight-In Rwy 25 NA at night. Circling Rwy 11, 25 NA at night. When local altimeter setting not received, use Daytona Beach altimeter setting increase LPV DA to 328 feet and all MDA 40 feet. Increase LNAV Cat C visibility 1/8 SM and Circling Cat C visibility 1/4 SM.

MISSED APPROACH: Climb to 4000 direct NOBPI and on track 157° to OAKIE and hold, continue climb-in-hold to 4000.

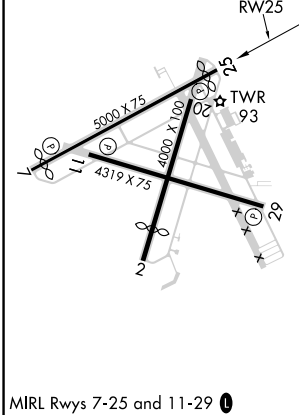
ATIS 124.625	DAYTONA APP CON 125.35 322.3	NEW SMYRNA TOWER ★ 119.675 (CTAF) 0	GND CON 121.325	UNICOM 122.95
------------------------	--	---	---------------------------	-------------------------

Procedure NA for arrival on OMN VORTAC airway radials 161 CW 183.

△
645



ELEV 11	D	TDZE 10
---------	----------	---------



4000	NOBPI	tr 157°	OAKIE	VGSI and RNAV glidepath not coincident (VGSI Angle 3.00/TCH 46).	4 NM
↑	★		△		PELYO Holding Pattern
			JAXEG 1600		066° → 6000 ← 246° 2700
			RWY 25		GP 3.00° TCH 60
			4.7 NM	6.6 NM	

CATEGORY	A	B	C	D
LPV DA	303-1 293 (300-1)			NA
LNAV MDA	440-1	430 (500-1)	440-1 1/4 430 (500-1 1/4)	NA
C CIRCLING	440-1 429 (500-1)	520-1 509 (600-1)	680-1 3/4 669 (700-1 3/4)	NA

SE-3, 16 JUN 2022 to 14 JUL 2022

SE-3, 16 JUN 2022 to 14 JUL 2022