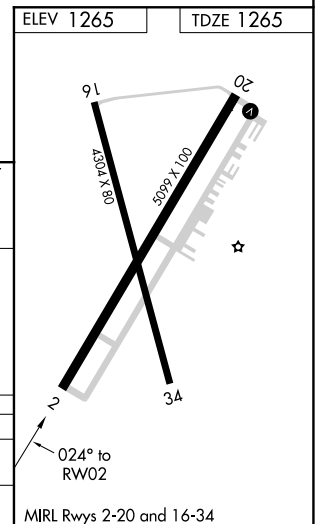
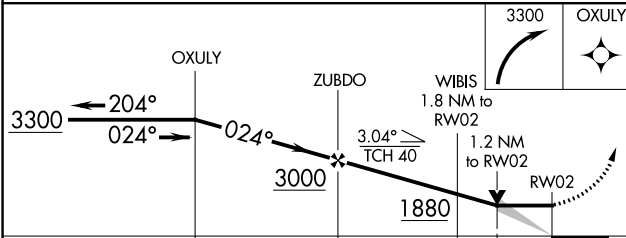
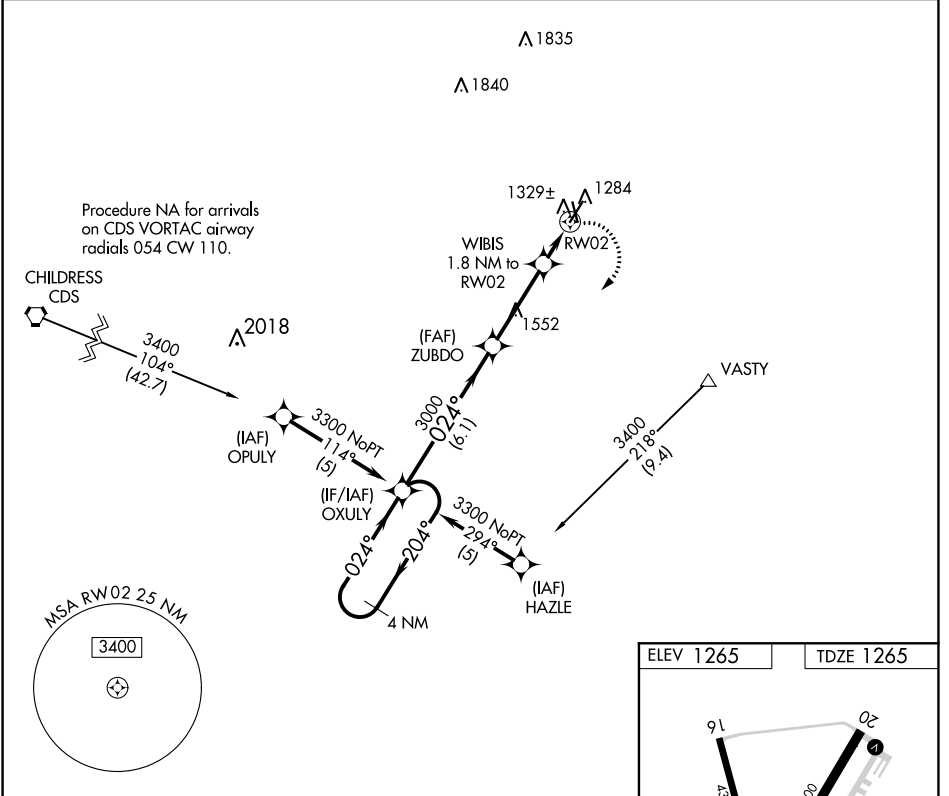


APP CRS	Rwy Idg	5099
024°	TDZE	1265
	Apt Elev	1265

RNAV (GPS) RWY 2

WILBARGER COUNTY (F05)

RNP APCH.		MISSED APPROACH: Climbing right turn to 3300 direct OXULY and hold.
▼	When local altimeter setting not received, use Frederick altimeter setting: increase all MDA 40 feet. VDP NA when using Frederick altimeter setting.	
AWOS-3	ALTUS APP CON*	UNICOM
118.525	125.1 353.7	122.8 (CTAF) 1



CATEGORY	A	B	C	D
LNNAV MDA	1680-1	415 (500-1)	1680-1¼ 415 (500-1¼)	NA
CIRCLING	1680-1 415 (500-1)	1720-1 455 (500-1)	1800-1½ 535 (600-1½)	NA

SC-2, 16 JUN 2022 to 14 JUL 2022

SC-2, 16 JUN 2022 to 14 JUL 2022