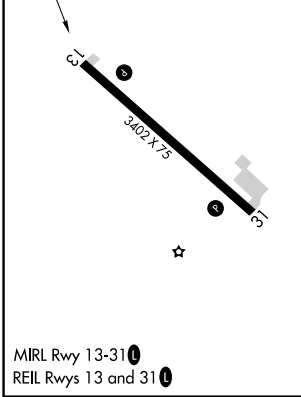
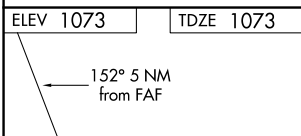
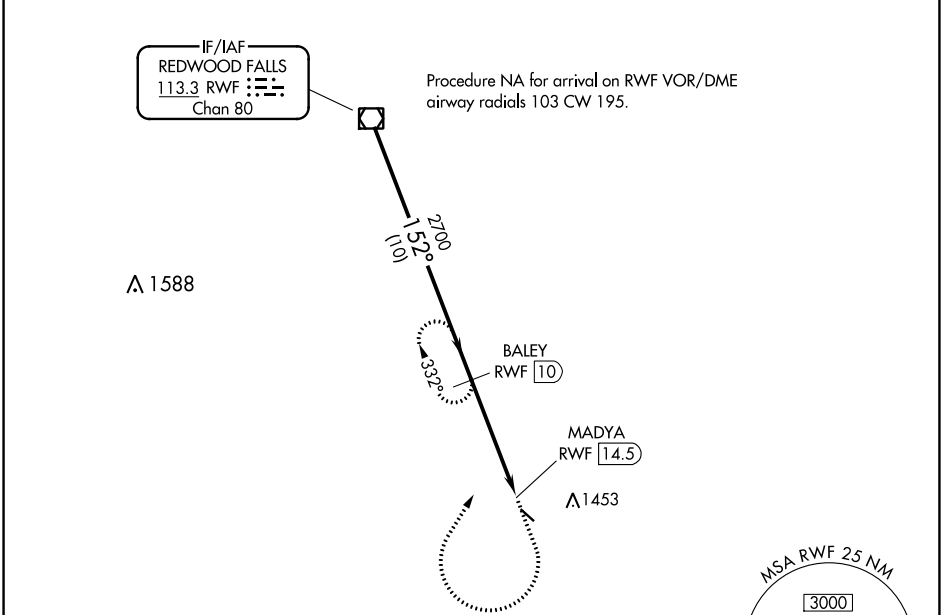


VOR/DME RWF <b>113.3</b> Chan <b>80</b>	APP CRS <b>152°</b>	Rwy Idg TDZE Apt Elev	<b>3402</b> <b>1073</b> <b>1073</b>
---	------------------------	-----------------------------	---

**VOR RWY 13**  
SPRINGFIELD MUNI (D42)

DME required.	MISSED APPROACH: Climb to 2000 then climbing right turn to 2700 on heading 030° and RWF R-152 to BALEY/10 DME and hold.
<p>▼ Procedure NA at night. Rwy 13 helicopter visibility reduction below 1 SM NA. Use Redwood Falls altimeter setting.</p> <p>▲ NA</p>	

RWF ASOS <b>126.575</b>	MINNEAPOLIS CENTER <b>127.1 290.2</b>	UNICOM <b>122.8 (CTAF)</b>
----------------------------	--	-------------------------------



VGSI and descent angles not coincident (VGSI Angle 3.00/TCH 20).		2000	2700	RWF R-152	BALEY RWF 10
		↑	hdg 030°		
RWF VOR/DME	BALEY RWF 10	2700		MADYA RWF 14.5	
2700 — 152° — 2700		3.01° TCH 40			
10 NM		4.5 NM		0.5	
CATEGORY	A	B	C	D	
S-13	1620-1	547 (600-1)	1620-1 3/4 547 (600-1 3/4)	NA	
CIRCLING	1660-1 587 (600-1)	1820-1 747 (800-1)	1820-2 1/4 747 (800-2 1/4)	NA	

NC-1, 16 JUN 2022 to 14 JUL 2022

NC-1, 16 JUN 2022 to 14 JUL 2022