

WAAS CH <b>86428</b> <b>W21A</b>	APP CRS <b>211°</b>	Rwy Idg <b>5003</b> TDZE <b>470</b> Apt Elev <b>473</b>
--	------------------------	---

# RNAV (GPS) RWY 21

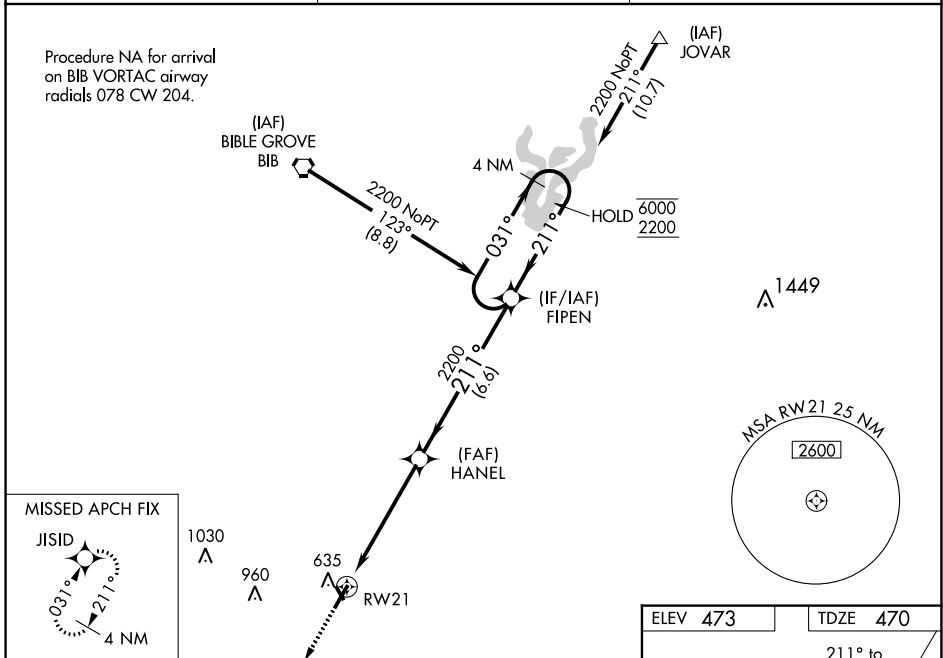
FLORA MUNI (F.O.A.)

RNP APCH.

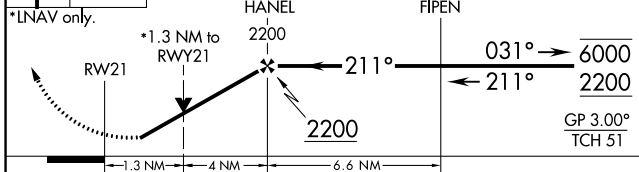
**⚠** Circling NA to Rwy's 15 and 33. Baro-VNAV and VDP NA when using Olney-Noble altimeter setting.  
**⚠** For uncompensated Baro-VNAV systems, LNAV/VNAV NA below -17°C or above 54°C. Rwy 21 helicopter visibility reduction below 3/4 SM NA. When local altimeter setting not received, use Olney-Noble altimeter setting and increase LPV DA to 779 feet, LNAV/VNAV DA to 838 feet and increase LNAV/VNAV visibility all Cats 1/8 SM, increase all MDA 40 feet.

MISSED APPROACH:  
Climb to 2200 direct JISID and hold.

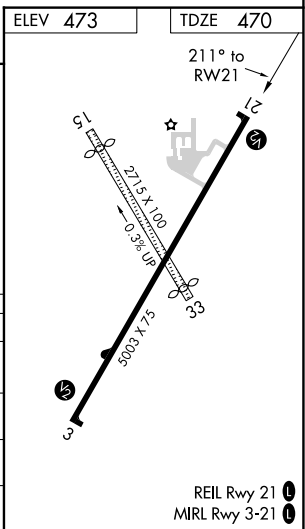
AWOS-3 <b>120.175</b>	KANSAS CITY CENTER <b>127.7 351.825</b>	UNICOM <b>122.7 (CTAF) 0</b>
--------------------------	--	---------------------------------



2200 JISID VGSJ and RNAV glidepath not coincident (VGSJ Angle 3.00/TCH 25). 4 NM Holding Pattern



CATEGORY	A	B	C	D
LPV DA		746-1	276 (300-1)	NA
LNAV/VNAV DA		805-1	335 (400-1)	NA
LNAV MDA	920-1	450 (500-1)	920-1 3/8 450 (500-1 3/8)	NA
CIRCLING	940-1	467 (500-1)	1160-2 687 (700-2)	NA



REIL Rwy 21 0  
MIRL Rwy 3-21 0

EC-3, 16 JUN 2022 to 14 JUL 2022

EC-3, 16 JUN 2022 to 14 JUL 2022