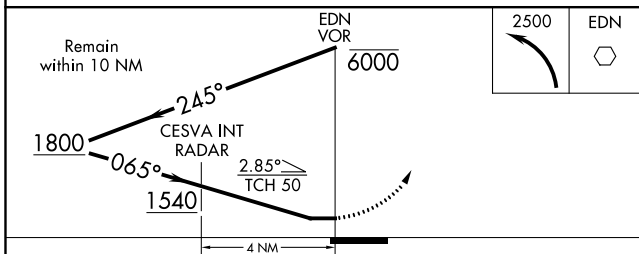
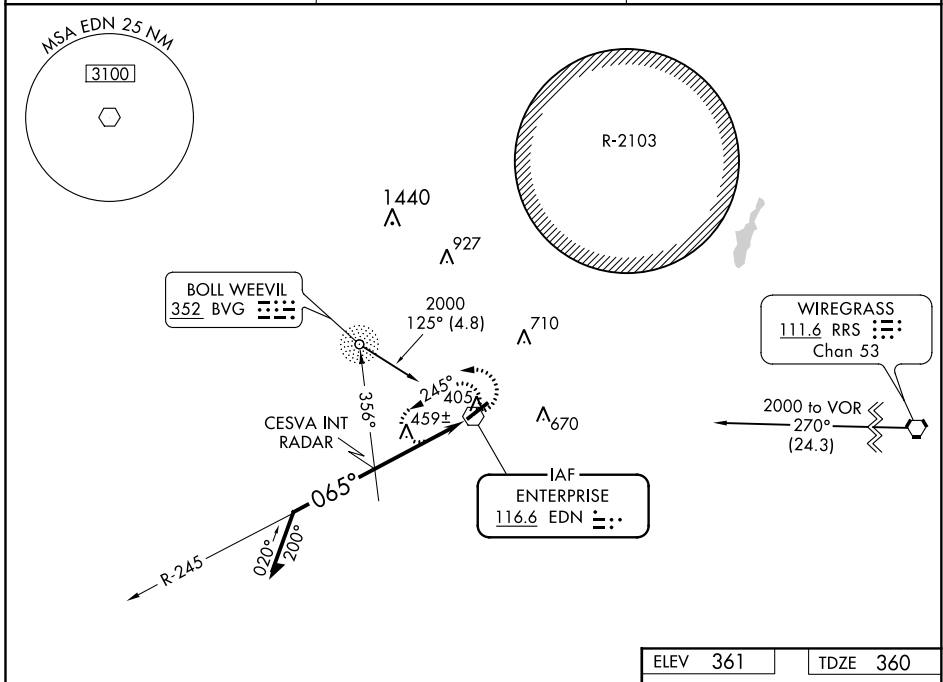


VOR EDN 116.6	APP CRS 065°	Rwy Idg 5080
		TDZE 360
		Apt Elev 361

VOR RWY 5
ENTERPRISE MUNI(EDN)

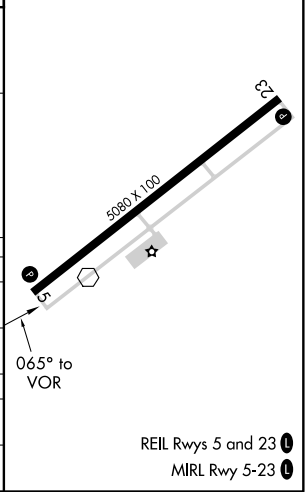
<p>▼ ADF or RADAR required. ▲ NA Use Cairns AAF (Fort Rucker) alimeter setting.</p>	<p>MISSED APPROACH: Climbing left turn to 2500 in EDN VOR holding pattern.</p>
---	--

<p>AWOS-3PT 118.9</p>	<p>CAIRNS APP CON * 133.45 239.275</p>	<p>UNICOM 122.8 (CTAF)</p>
----------------------------------	---	---------------------------------------



ELEV 361	TDZE 360
----------	----------

CATEGORY	A	B	C	D
S-5	1540-1¼ 1180 (1200-1¼)	1540-1½ 1180 (1200-1½)	1540-3 1180 (1200-3)	NA
CIRCLING	1540-1¼ 1179 (1200-1¼)	1540-1½ 1179 (1200-1½)	1540-3 1179 (1200-3)	NA
CESVA INT/RADAR MINIMUMS				
S-5	820-1	460 (500-1)	820-1¼ 460 (500-1¼)	NA
CIRCLING	920-1	559 (600-1)	1100-2 739 (800-2)	NA



SE-4, 16 JUN 2022 to 14 JUL 2022

SE-4, 16 JUN 2022 to 14 JUL 2022