

LOC/DME I-AFP <b>108.55</b> Chan <b>22(Y)</b>	APP CRS <b>342°</b>	Rwy Idg TDZE Apt Elev	<b>5498</b> <b>299</b> <b>300</b>
---	------------------------	-----------------------------	---

# ILS or LOC RWY 34

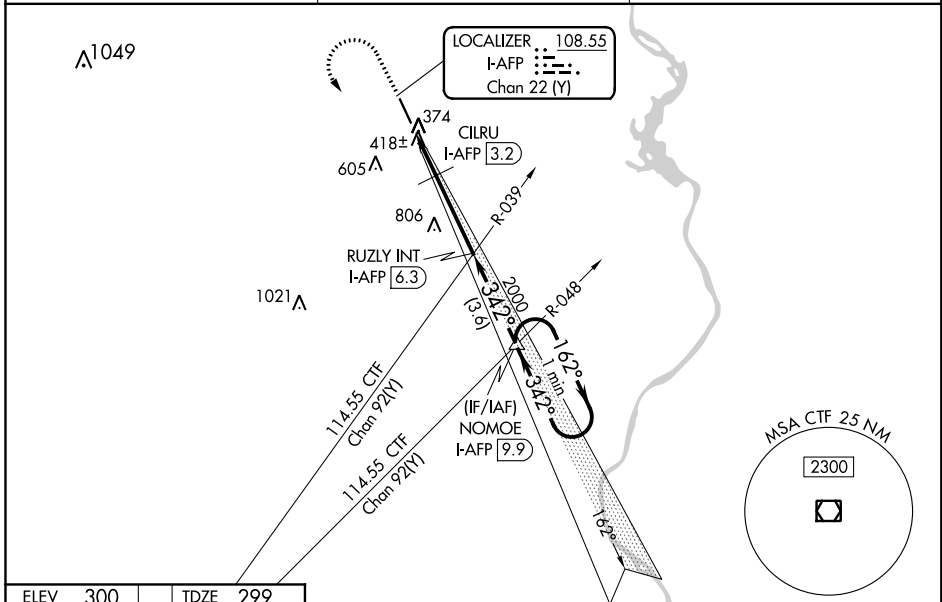
ANSON COUNTY/JEFF CLOUD FLD (AFP)

**RNP APCH.**

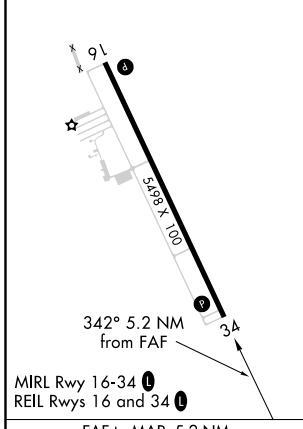
**▼** Rwy 34 helicopter visibility reduction below 3/4 SM NA. VDP NA when using Rockingham altimeter setting. When local altimeter setting not received, use Rockingham altimeter setting: increase S-ILS 34 DA to 607 and S-ILS 34 all Cats visibility 1/8 SM; increase all MDA 60 feet and S-LOC 34 Cats C/D visibility 1/8 SM and CILRU fix minimums S-LOC 34 Cats C/D visibility 1/4 SM.

**▲** MISSED APPROACH: Climb to 1000 then climbing left turn to 3000 on heading 120° and on I-AFP S course (162°) to NOMOE INT/I-AFP 9.9 DME and hold.

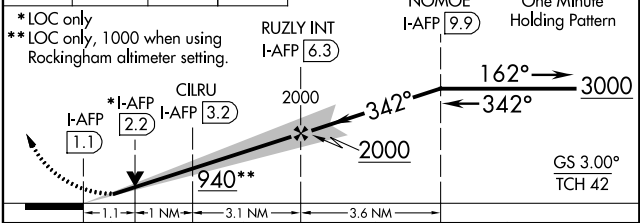
AWOS-3 <b>119.325</b>	CHARLOTTE APP CON <b>120.05 307.8</b>	UNICOM <b>122.8 (CTAF) ①</b>
--------------------------	--	---------------------------------



ELEV <b>300</b>	TDZE <b>299</b>
-----------------	-----------------



1000	3000	I-AFP S crs	NOMOE	VGSI and ILS glidepath not coincident (VGSI Angle 3.00/TCH 45).
↑	hdg 120°		△	



CATEGORY	A	B	C	D
S-ILS 34	558-7/8 259 (300-7/8)			
S-LOC 34	940-1	641 (700-1)	940-1 7/8	641 (700-1 7/8)
CILRU FIX MINIMUMS				
S-LOC 34	680-1	381 (400-1)	680-1 1/8	381 (400-1 1/8)

FAF to MAP 5.2 NM					
Knots	60	90	120	150	180
Min:Sec	5:12	3:28	2:36	2:05	1:44

SE-2, 16 JUN 2022 to 14 JUL 2022

SE-2, 16 JUN 2022 to 14 JUL 2022