

WAAS CH 40221 W16A	APP CRS 162°	Rwy Idg TDZE Apt Elev	5498 300 300
--	------------------------	-----------------------------	---

RNAV (GPS) RWY 16

ANSON COUNTY/JEFF CLOUD FLD (A/F/P)

RNP APCH.

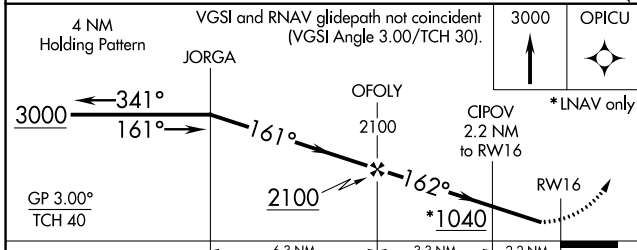
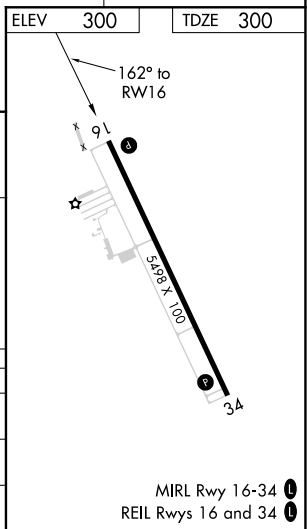
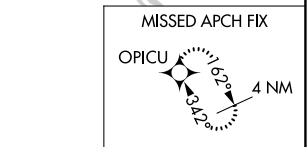
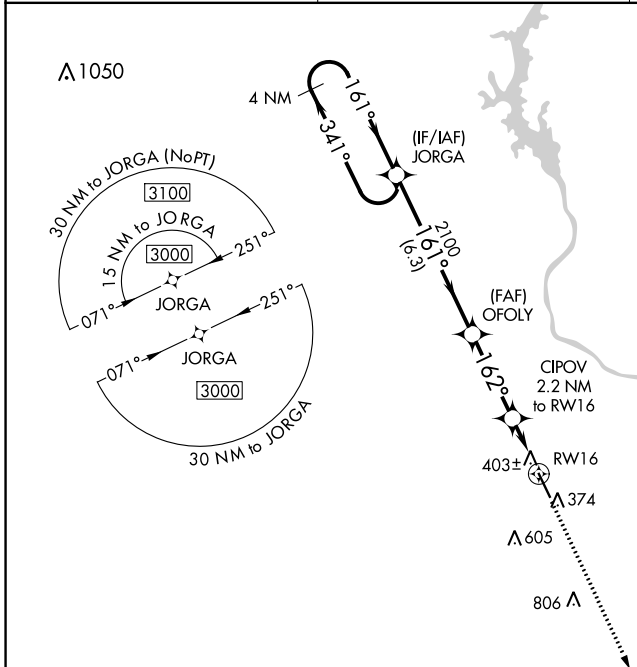
▼ Procedure NA at night. Baro-VNAV NA when using Rockingham altimeter setting.
 ▲ For uncompensated Baro-VNAV systems, LNAV/VNAV NA below -15°C or above 42°C.
 Rwy 16 helicopter visibility reduction below 1 SM NA. When local altimeter setting not received, use Rockingham altimeter setting: increase LPV DA to 655 and LPV all Cats visibility ¼ SM; increase LNAV/VNAV DA to 634 and LNAV/VNAV all Cats visibility ½ SM; increase all MDA 60 feet and LNAV Cats C/D visibility ¼ SM.

MISSED APPROACH: Climb to 3000 direct OPICU and hold.

AWOS-3
119.325

CHARLOTTE APP CON
120.05 307.8

UNICOM
122.8 (CTAF) 1



CATEGORY	A	B	C	D
LPV DA		606-1	306 (400-1)	
LNAV/VNAV DA		585-1	285 (300-1)	
LNAV MDA		660-1	360 (400-1)	

SE-2, 16 JUN 2022 to 14 JUL 2022

SE-2, 16 JUN 2022 to 14 JUL 2022