

WAAS CH <b>69408</b> <b>W34A</b>	APP CRS <b>342°</b>	Rwy Idg TDZE Apt Elev	<b>5498</b> <b>299</b> <b>300</b>
--	------------------------	-----------------------------	---

# RNAV (GPS) RWY 34

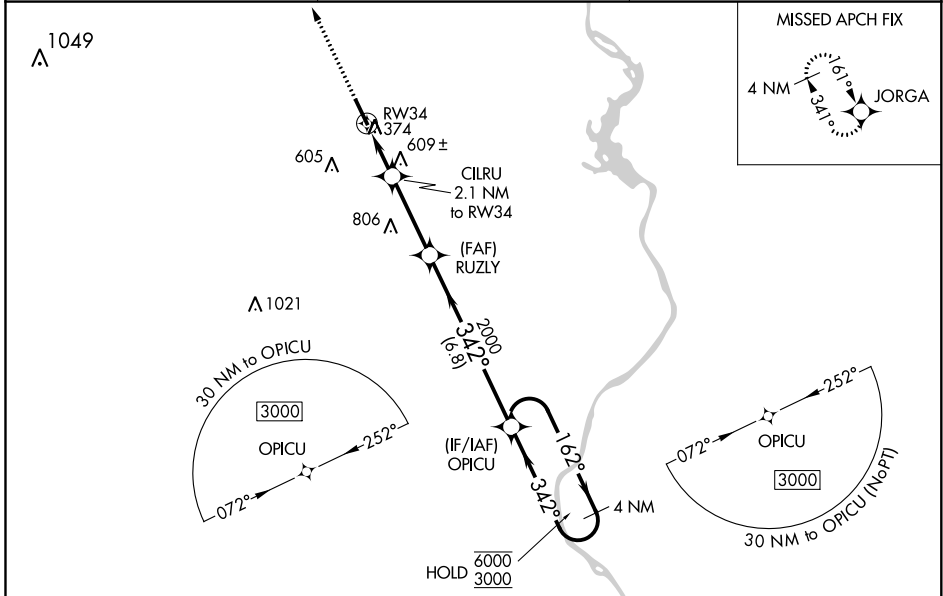
ANSON COUNTY/JEFF CLOUD FLD (A/F/P)

RNP APCH - GPS.

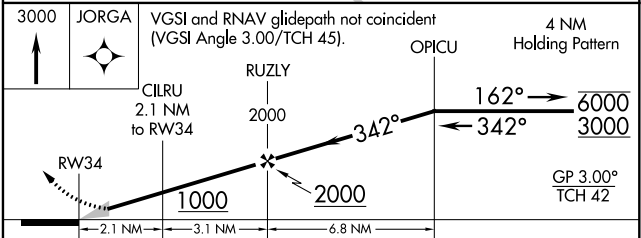
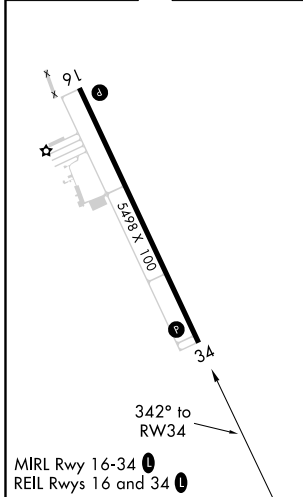
**⚠** For uncompensated Baro-VNAV systems, procedure NA below -15°C or above 42°C.

MISSED APPROACH: Climb to 3000 direct JORGA and hold.

AWOS-3 <b>119.325</b>	CHARLOTTE APP CON <b>120.05 307.8</b>	UNICOM <b>122.8 (CTAF)</b>
--------------------------	--	-------------------------------



ELEV <b>300</b>	TDZE <b>299</b>
-----------------	-----------------



CATEGORY	A	B	C	D
LPV DA		556-3/4	257 (300-3/4)	
LNAV/VNAV DA		957-17/8	658 (700-17/8)	
LNAV MDA	860-1	561 (600-1)	860-1 1/2	561 (600-1 1/2)
CIRCLING	860-1	560 (600-1)	1080-2 1/4 780 (800-2 1/4)	1080-2 1/2 780 (800-2 1/2)

SE-2, 16 JUN 2022 to 14 JUL 2022

SE-2, 16 JUN 2022 to 14 JUL 2022