

HERLONG, CALIFORNIA

RNAV (GPS) RWY 27

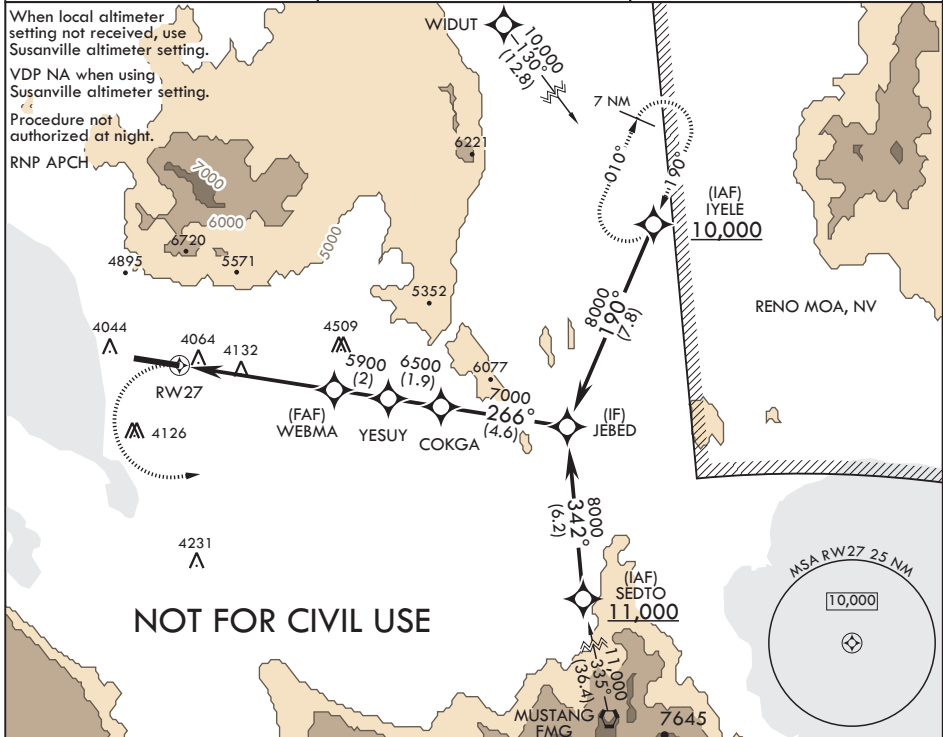
APCH CRS	Rwy Idg	10,000
266°	TDZE	4012
	Arprt Elev	4012

AL-6624 (USA)

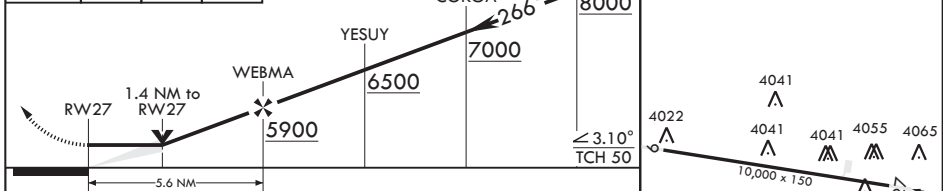
AMEDEE AAF (KAHC)

NA * Circling NA for CAT CD north of Rwy 9-27.
MISSED APPROACH: Climbing left turn to 10,000 direct JEBED and track 010° to IYELE and hold, continue climb-in-hold to 10,000. When authorized by ATC, climb-in-hold to 14,000.

AWOS-3 118.825	OAKLAND CENTER 128.8 285.5	CTAF 126.2 241.9
--------------------------	--------------------------------------	----------------------------



10,000 JEBED tr 010° IYELE VGS1 and descent angles not coincident (VGS1 Angle 3.00/TCH 87). JEBED ELEV 4012 TDZE 4012



CATEGORY	A	B	C	D
LNAV MDA	4540-1	528 (600-1)	4540-1½	528 (600-1½)
C CIRCLING	4540-1	4680-1	4680-1¾	4680-2
	528 (600-1)	668 (700-1)	668 (700-1¾)	668 (700-2)
SUSANVILLE ALTIMETER SETTING MINIMUMS				
LNAV MDA	4620-1	608 (700-1)	4620-2	608 (700-2)
C CIRCLING	4620-1	4760-1	4760-2¼	4760-2½
	608 (700-1)	748 (800-1)	748 (800-2¼)	748 (800-2½)

HERLONG, CALIFORNIA
 Amdt 2 30JAN20

40°16'N - 120°09'W

AMEDEE AAF (KAHC)

RNAV (GPS) RWY 27

SW-2, 16 JUN 2022 to 14 JUL 2022

SW-2, 16 JUN 2022 to 14 JUL 2022