

APP CRS	Rwy Idg	<b>5000</b>
<b>141°</b>	TDZE	<b>3730</b>
	Apt Elev	<b>3730</b>

# RNAV (GPS) RWY 14

HOLYOKE (HEQ)

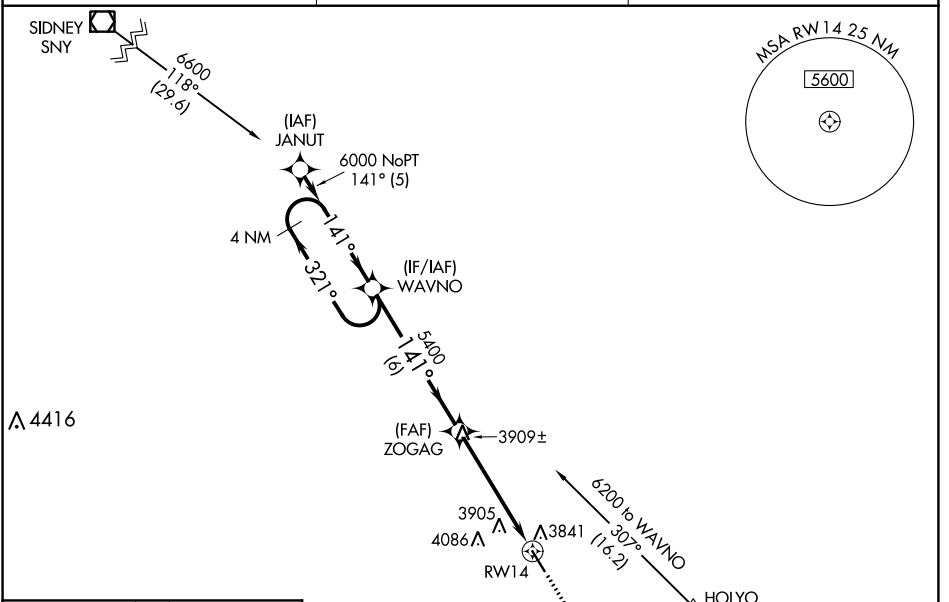
**NA** Night landing: Rwy 14 NA. DME/DME RNP-0.3 NA. Helicopter visibility reduction below 1 SM NA. When local altimeter setting not received, use Sidney Muni/Lloyd W Carr fld altimeter setting and increase all MDAs 200 feet and increase LNAV Cat C/D visibility ½ mile, Circling Cat C visibility ½ mile and Circling Cat D visibility ¾ mile.

**MISSED APPROACH:** Climb to 6500 direct YOSUS and via 131° track to ASHBY and hold.

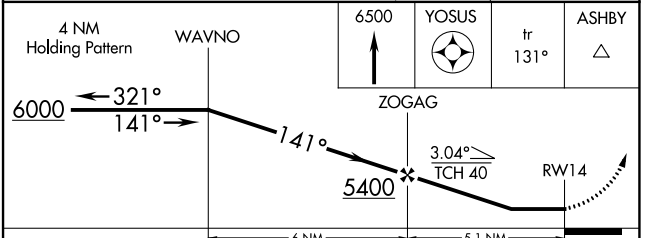
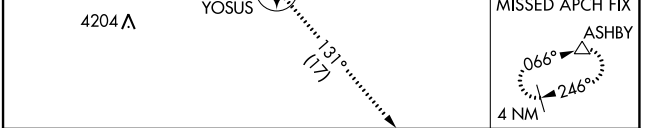
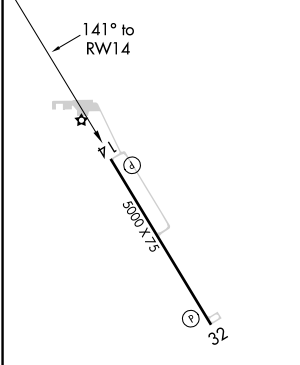
**AWOS-3**  
**119.275**

**DENVER CENTER**  
**118.475 225.4**

**UNICOM**  
**122.7 (CTAF) 0**



ELEV 3730	TDZE 3730
-----------	-----------



CATEGORY	A	B	C	D
LNAV MDA	4160-1	430 (500-1)	4160-1 ¼	430 (500-1 ¼)
CIRCLING	4200-1 470 (500-1)	4240-1 510 (600-1)	4240-1 ½ 510 (600-1 ½)	4400-2 670 (700-2)

MIRL Rwy 14-32 0  
REIL Rwys 14 and 32 0

HOLYOKE, COLORADO  
Orig-F 15SEP16

40°34'N-102°16'W

# RNAV (GPS) RWY 14

SW-1, 16 JUN 2022 to 14 JUL 2022

SW-1, 16 JUN 2022 to 14 JUL 2022