

WAAS CH <b>90326</b> <b>W34A</b>	APP CRS <b>344°</b>	Rwy Idg TDZE Apt Elev	<b>3502</b> <b>1279</b> <b>1279</b>
--	------------------------	-----------------------------	---

# RNAV (GPS) RWY 34

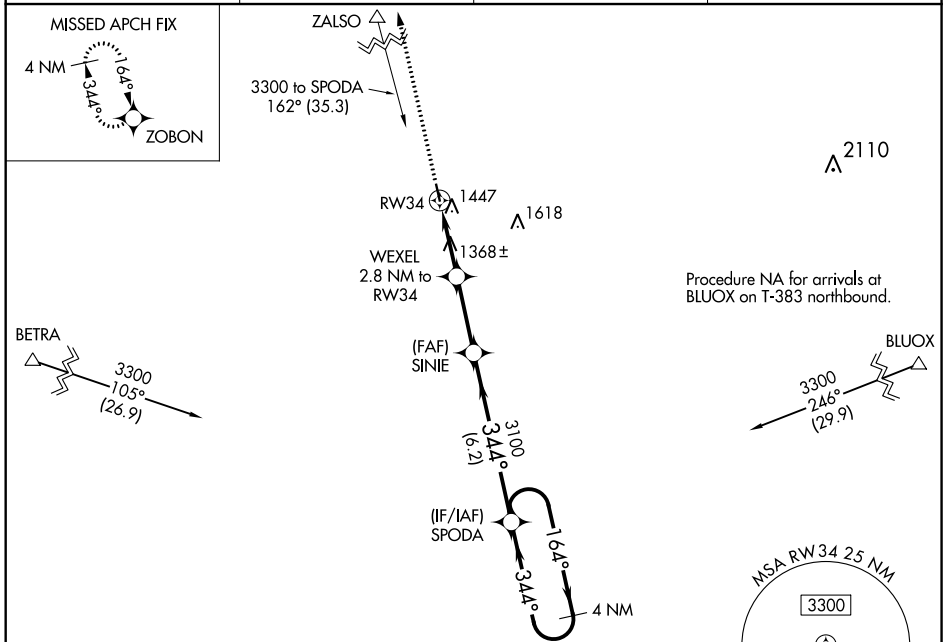
FOSSTON MUNI-ANDERSON FIELD (F'S'E)

RNP APCH

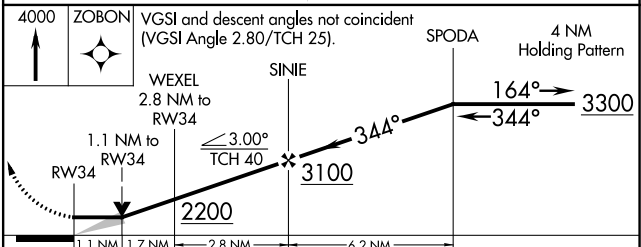
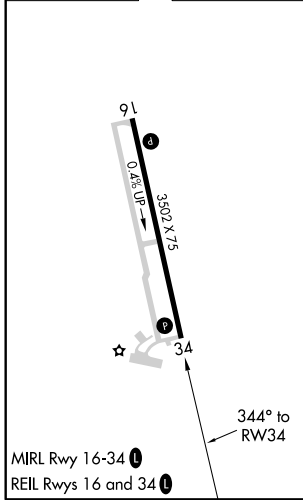
VDP NA when using Thief River Falls altimeter setting. When local altimeter setting not received, use Thief River Falls altimeter setting and increase all MDA 100 feet and increase LP and LNAV Cat C visibility  $\frac{3}{8}$  SM, and increase Circling Cat C visibility  $\frac{1}{2}$  SM.

MISSED APPROACH:  
Climb to 4000 direct ZOBON and hold.

AWOS-3 <b>118.35</b>	MINNEAPOLIS CENTER <b>134.75 251.1</b>	GCO <b>121.725</b>	CTAF <b>122.9</b>
-------------------------	---	-----------------------	----------------------



ELEV 1279	TDZE 1279
-----------	-----------



CATEGORY	A	B	C	D
LP MDA	1620-1 341 (400-1)			NA
LNAV MDA	1760-1	481 (500-1)	1760-1 $\frac{3}{8}$ 481 (500-1 $\frac{3}{8}$ )	NA
CIRCLING	1860-1	581 (600-1)	1860-1 $\frac{1}{2}$ 581 (600-1 $\frac{1}{2}$ )	NA

NC-1, 16 JUN 2022 to 14 JUL 2022

NC-1, 16 JUN 2022 to 14 JUL 2022