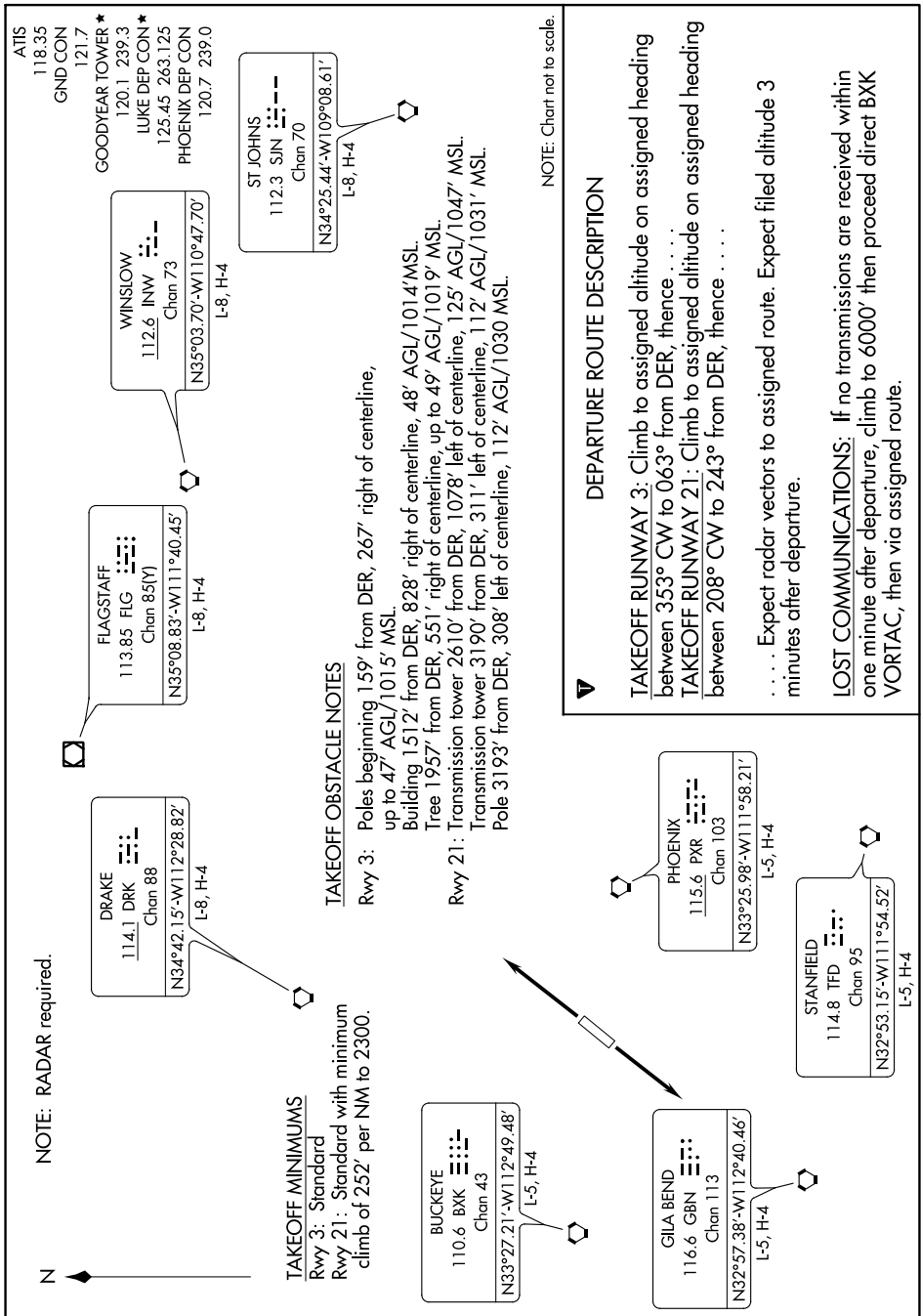


GOODYEAR TWO DEPARTURE

SL-6648 (FAA)

PHOENIX GOODYEAR (GYR)
GOODYEAR, ARIZONA

SW-4, 16 JUN 2022 to 14 JUL 2022



NOTE: Chart not to scale.

DEPARTURE ROUTE DESCRIPTION

TAKEOFF RUNWAY 3: Climb to assigned altitude on assigned heading between 353° CW to 063° from DER, thence

TAKEOFF RUNWAY 21: Climb to assigned altitude on assigned heading between 208° CW to 243° from DER, thence

. . . . Expect radar vectors to assigned route. Expect filed altitude 3 minutes after departure.

LOST COMMUNICATIONS: If no transmissions are received within one minute after departure, climb to 6000' then proceed direct BXX VORTAC, then via assigned route.

SW-4, 16 JUN 2022 to 14 JUL 2022

GOODYEAR TWO DEPARTURE

GOODYEAR, ARIZONA
PHOENIX GOODYEAR (GYR)