

# IZZ0 SEVEN DEPARTURE (RNAV)

AL-6648 (FAA)

PHOENIX GOODYEAR (GYR)  
GOODYEAR, ARIZONA

SW-4, 16 JUN 2022 to 14 JUL 2022

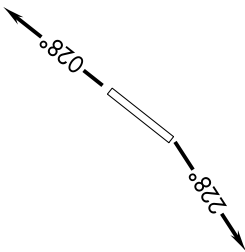
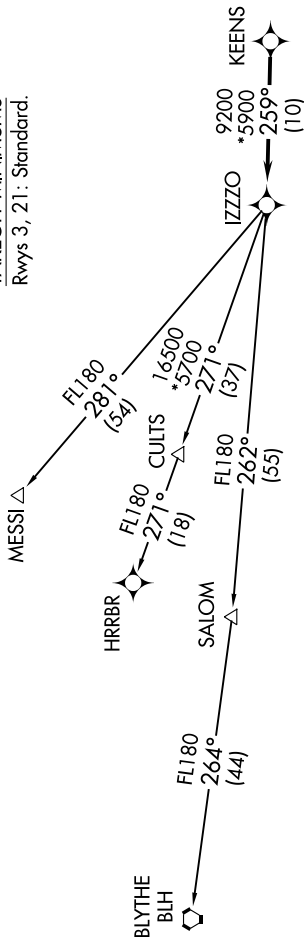
## TOP ALTITUDE: ASSIGNED BY ATC

ATIS 118.35  
GND CON 121.7  
GOODYEAR TOWER ★  
120.1 239.3  
LUKE DEP CON ★  
125.45 263.125  
PHOENIX DEP CON  
120.7 239.0

RNAV 1.  
Turboprops and turboprops only.  
RADAR required.  
GPS required.

NOTE: Aircraft requesting FL220 and below must file BLYTHE TRANSITION.  
NOTE: Turboprops landing LAX, file MESSI TRANSITION.  
NOTE: Aircraft landing other than LAX and turboprops landing at LAX: Requesting FL240 and above, file HRRBR TRANSITION.  
NOTE: Aircraft departing KGEU and KGYR ATC assigned only.

TAKEOFF MINIMUMS  
Rwys 3, 21: Standard.



## DEPARTURE ROUTE DESCRIPTION

TAKEOFF RUNWAY 3: Climb heading 028° or as assigned by ATC, thence . . .  
TAKEOFF RUNWAY 21: Climb heading 228° or as assigned by ATC, thence . . .

. . . expect RADAR vectors to KEENS, then on track 259° to IZZO, then on (transition).  
Maintain ATC assigned altitude, expect filed altitude 3 minutes after departure.

BLYTHE TRANSITION (IZZ07.BLH)  
HRRBR TRANSITION (IZZ07.HRRBR)  
MESSI TRANSITION (IZZ07.MESSI)

NOTE: Chart not to scale.

# IZZ0 SEVEN DEPARTURE (RNAV)

SW-4, 16 JUN 2022 to 14 JUL 2022