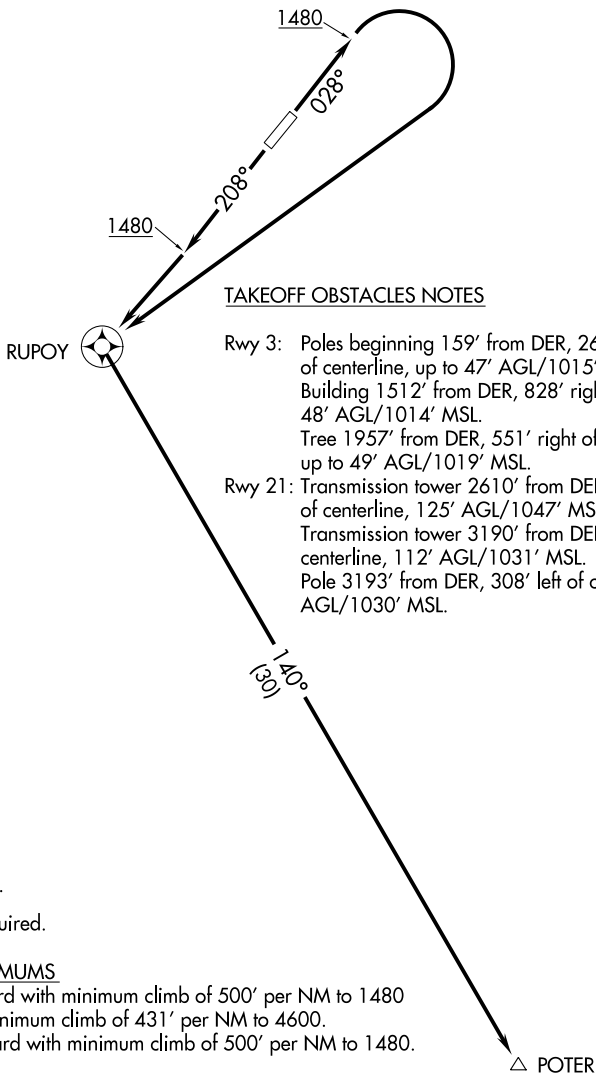


ATIS	118.35
GND CON	121.7
GOODYEAR TOWER*	120.1 239.3
LUKE DEP CON*	125.45 263.125
PHOENIX DEP CON	120.7 239.0



TAKEOFF OBSTACLES NOTES

- Rwy 3: Poles beginning 159' from DER, 267' right of centerline, up to 47' AGL/1015' MSL.  
Building 1512' from DER, 828' right of centerline, 48' AGL/1014' MSL.  
Tree 1957' from DER, 551' right of centerline, up to 49' AGL/1019' MSL.
- Rwy 21: Transmission tower 2610' from DER, 1078' left of centerline, 125' AGL/1047' MSL.  
Transmission tower 3190' from DER, 311' left of centerline, 112' AGL/1031' MSL.  
Pole 3193' from DER, 308' left of centerline, 112' AGL/1030' MSL.

NOTE: RNAV 1.

NOTE: GPS required.

TAKEOFF MINIMUMS

Rwy 3: Standard with minimum climb of 500' per NM to 1480 then minimum climb of 431' per NM to 4600.

Rwy 21: Standard with minimum climb of 500' per NM to 1480.

NOTE: Chart not to scale.

DEPARTURE ROUTE DESCRIPTION

TAKEOFF RUNWAY 3: Climb heading 028° to 1480, then right turn direct RUPOY thence. . . .

TAKEOFF RUNWAY 21: Climb heading 208° to 1480, then direct RUPOY thence. . . .

. . . .on track 140° to POTER. Expect filed altitude 3 minutes after departure.

SW-4, 16 JUN 2022 to 14 JUL 2022

SW-4, 16 JUN 2022 to 14 JUL 2022