

WAAS CH <b>42839</b> <b>W03A</b>	APP CRS <b>030°</b>	Rwy Idg TDZE Apt Elev	<b>8500</b> <b>954</b> <b>969</b>
--	------------------------	-----------------------------	---

# RNAV (GPS) RWY 3

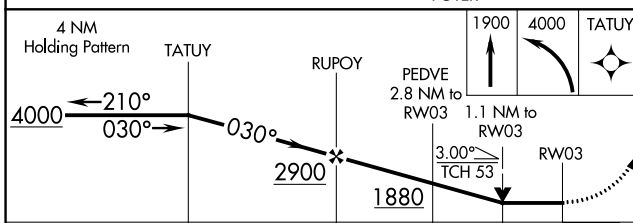
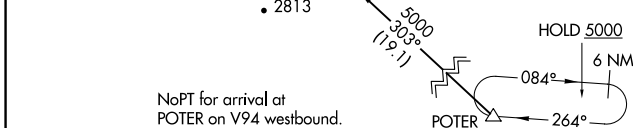
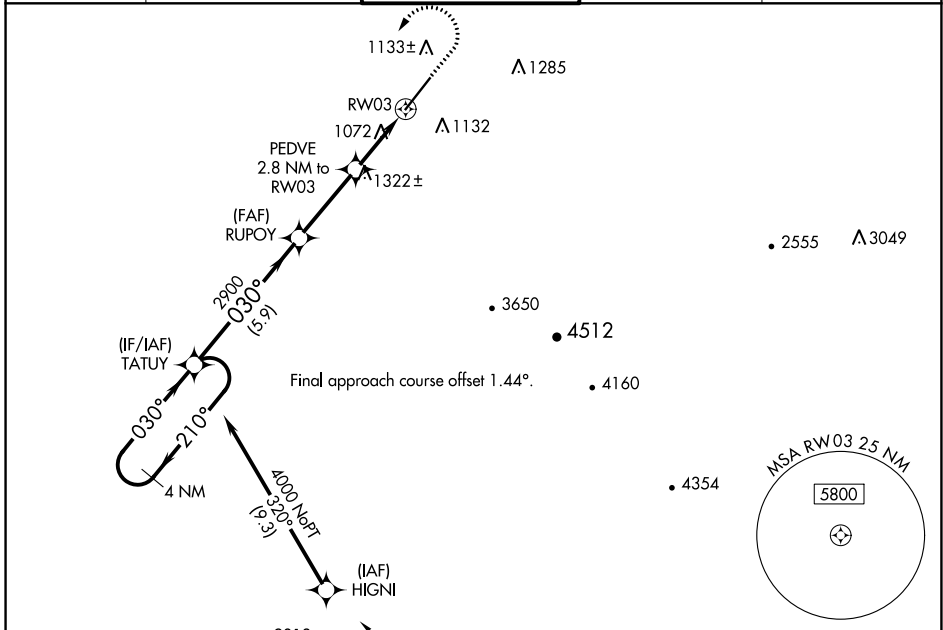
PHOENIX GOODYEAR (GYR)

RNP APCH.

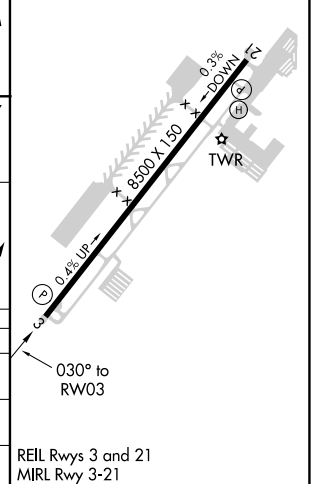
Procedure NA at night. Helicopter visibility reduction below  $\frac{3}{4}$  SM NA. VDP NA when using Phoenix Sky Harbor Intl altimeter setting. When local altimeter setting not received, use Phoenix Sky Harbor Intl altimeter setting; increase all MDA 80 feet and visibility LP/LNAV Cat C/D and Circling Cat C  $\frac{1}{4}$  SM.

MISSED APPROACH: Climb to 1900 then climbing left turn to 4000 direct TATUY and hold.

ATIS <b>118.35</b>	LUKE APP CON ★ <b>125.45 263.125</b>	GOODYEAR TOWER ★ <b>120.1 (CTAF) 239.3</b>	GND CON <b>121.7</b>	UNICOM <b>122.95</b>
-----------------------	---	---	-------------------------	-------------------------



ELEV 969	TDZE 954
----------	----------



CATEGORY	A	B	C	D
LP MDA	1340-1 386 (400-1)		1340-1 $\frac{1}{8}$ 386 (400-1 $\frac{1}{8}$ )	
LNAV MDA	1580-1 626 (700-1)		1580-1 $\frac{3}{4}$ 626 (700-1 $\frac{3}{4}$ )	
CIRCLING	1580-1 611 (700-1)		1860-2 $\frac{3}{4}$ 891 (900-2 $\frac{3}{4}$ )	1920-3 951 (1000-3)

REIL Rwy 3 and 21  
MIRL Rwy 3-21

SW-4, 16 JUN 2022 to 14 JUL 2022

SW-4, 16 JUN 2022 to 14 JUL 2022