

WAAS CH 86730 W34A	APP CRS 339°	Rwy Idg TDZE Apt Elev	3298 1023 1023
--	------------------------	-----------------------------	---

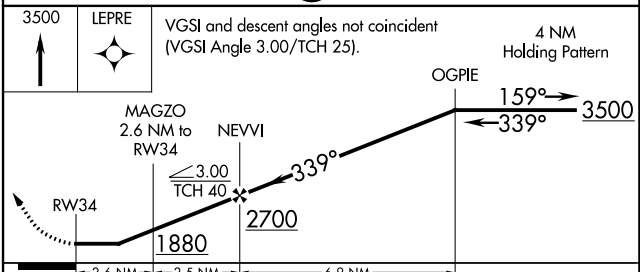
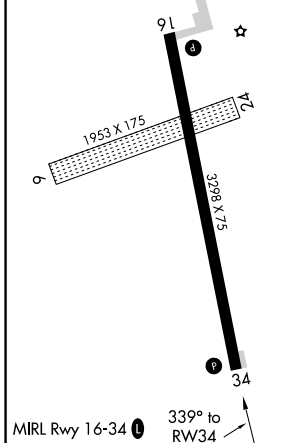
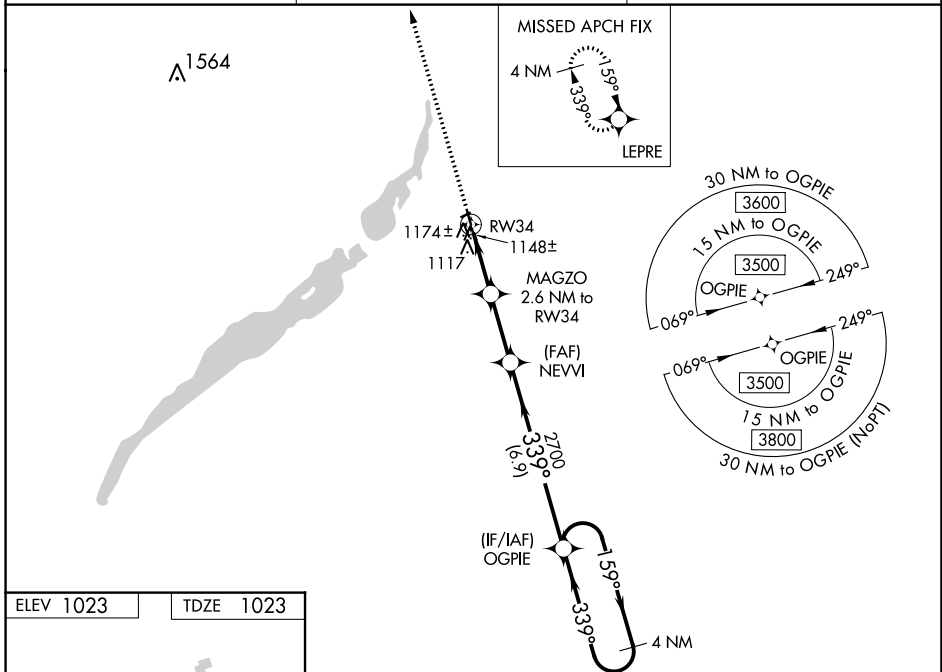
RNAV (GPS) RWY 34

WHEATON MUNI (ETH)

⚠ When VGSI inop, Straight-in/Circling Rwy 34 procedure NA at night.
 DME/DME RNP-0.3 NA. Visibility reduction by helicopters NA.
 When local altimeter setting not received, use Wahpeton/Harry Stern altimeter setting and increase all MDA 80 feet and LP Cat C and LNAV Cat C visibility to 1 3/8 mile.
 Circling NA to Rws 6 and 24.

MISSED APPROACH: Climb to 3500 direct LEPRE and hold.

AWOS-3 118.775	MINNEAPOLIS CENTER 126.1 269.2	UNICOM 122.8 (CTAF) 0
--------------------------	--	---------------------------------



CATEGORY	A	B	C	D
LP MDA	1400-1		377 (400-1)	NA
LNAV MDA	1440-1	417 (500-1)	1440-1 1/8 417 (500-1 1/8)	NA
CIRCLING	1480-1	457 (500-1)	1500-1 1/2 477 (500-1 1/2)	NA

NC-1, 16 JUN 2022 to 14 JUL 2022

NC-1, 16 JUN 2022 to 14 JUL 2022