

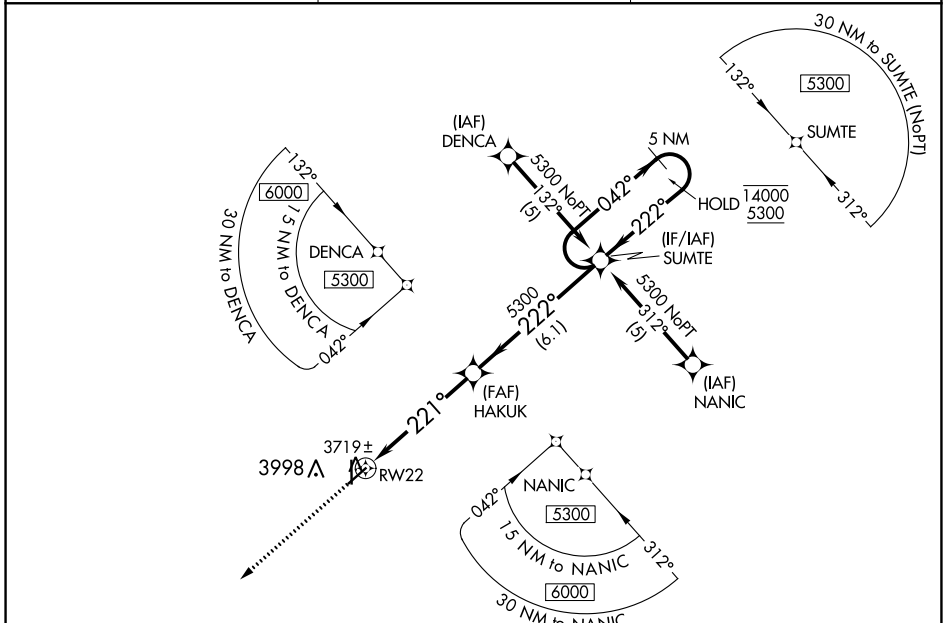
APP CRS <b>221°</b>	Rwy Idg TDZE Apt Elev	<b>4900</b> <b>3615</b> <b>3622</b>
------------------------	-----------------------------	---

# RNAV (GPS) RWY 22

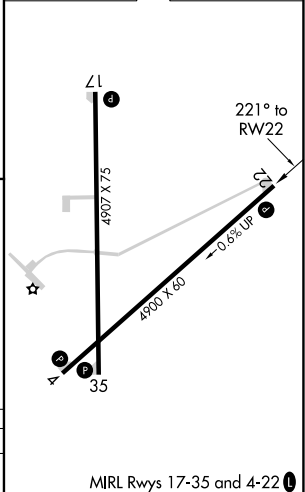
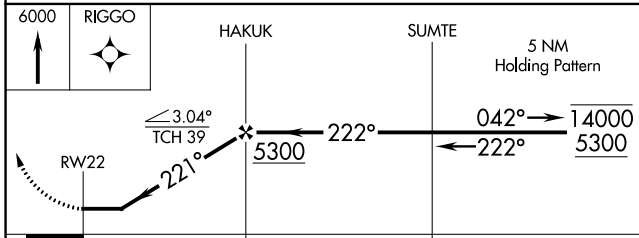
ELKHART-MORTON COUNTY (EHA)

RNP APCH-GPS.	MISSED APPROACH: Climb to 6000 direct RIGGO and hold.
Rwy 22 helicopter visibility reduction below 3/4 SM NA.	

AWOS-3P <b>118.025</b>	KANSAS CITY CENTER <b>134.0 257.625</b>	UNICOM <b>122.8 (CTAF) 0</b>
---------------------------	--	---------------------------------



ELEV 3622	TDZE 3615
-----------	-----------



CATEGORY	A	B	C	D
LNAV MDA	4100-1	485 (500-1)	4100-1 3/8 485 (500-1 3/8)	NA

NC-2, 16 JUN 2022 to 14 JUL 2022

NC-2, 16 JUN 2022 to 14 JUL 2022