

WAAS 58308 W18A	APP CRS 176°	Rwy ldg 5200 TDZE 826 Apt Elev 831
-------------------------------------	------------------------	---

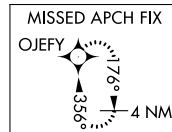
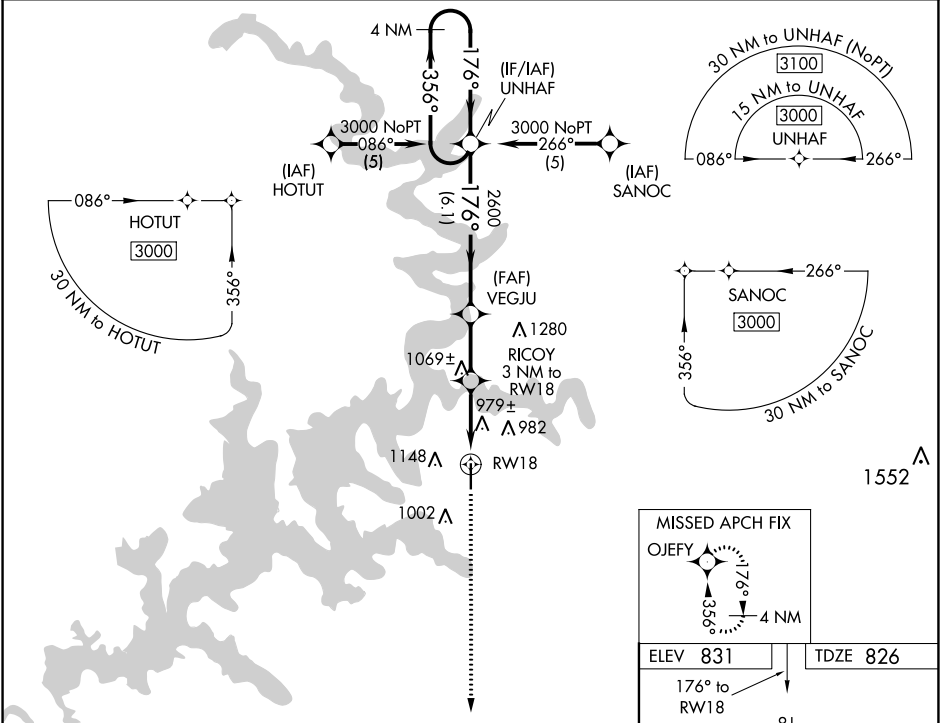
RNAV (GPS) RWY 18

GROVE MUNI (G.M.J)

For uncompensated Baro-VNAV systems, LNAV/VNAV NA below -16°C (4°F) or above 54°C (130°F). DME/DME RNP-0.3 NA. Visibility reduction by helicopters NA.

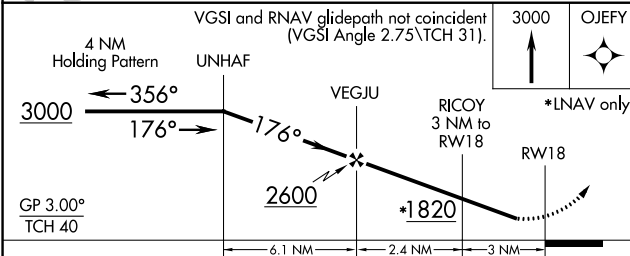
MISSED APPROACH: Climb to 3000 direct OJEFY and hold.

AWOS-3PT 119.025	KANSAS CITY CENTER 128.8 354.1	UNICOM 122.8 (CTAF)
----------------------------	--	-------------------------------

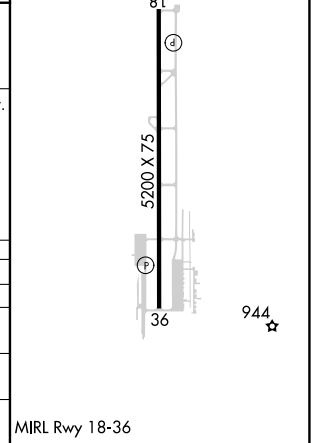


ELEV 831	TDZE 826
----------	----------

176° to RWY 18



CATEGORY	A	B	C	D
LPV DA	1153-1¼	327 (400-1¼)		NA
LNAV/VNAV DA	1346-2	520 (600-2)		NA
LNAV MDA	1240-1	414 (500-1)	1240-1¼ 414 (500-1¼)	NA
CIRCLING	1500-1	669 (700-1)	1500-1¾ 669 (700-1¾)	NA



SC-1, 16 JUN 2022 to 14 JUL 2022

SC-1, 16 JUN 2022 to 14 JUL 2022