

LOC/DME I-JUH 109.35 Chan 30(Y)	APP CRS 276°	Rwy Idg TDZE Apt Elev	5002 3142 3178
---	------------------------	-----------------------------	---

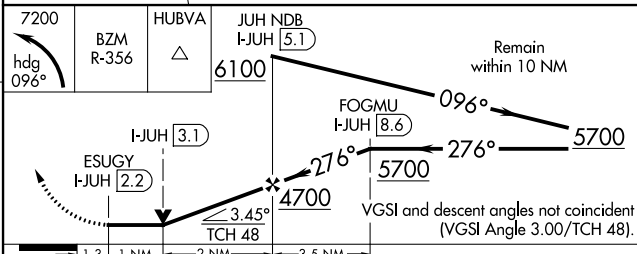
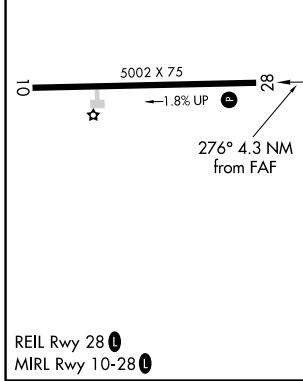
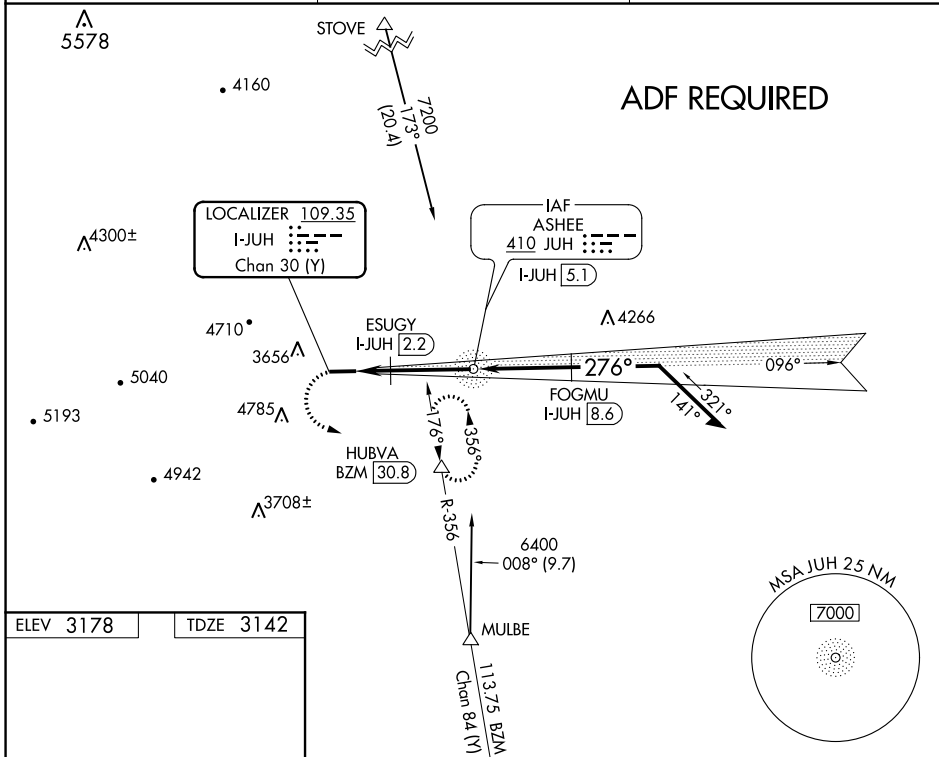
LOC RWY 28

ASHE COUNTY (GEV)

NA Circling Rwy 10 NA at night. DME required. Rwy 28 helicopter visibility reduction below 3/4 SM NA. VDP NA when using Marion/Wytheville altimeter setting. When local altimeter setting not received, use Marion/Wytheville altimeter setting and increase all MDA 160 feet and S-28 Cats C/D visibility 1/2 mile.

MISSED APPROACH: Climbing left turn to 7200 on heading 096° and BZM VOR/DME R-356 to HUBVA/BZM 30.8 DME and hold, continue climb-in-hold to 7200.

AWOS-3 120.675	ATLANTA CENTER 125.15 263.0	UNICOM 122.8 (CTAF)
--------------------------	---------------------------------------	-------------------------------



1.3	1 NM	2 NM	3.5 NM
CATEGORY	A	B	C D
S-28	3860-1 1/2	718 (700-1 1/2)	3860-2 718 (700-2)
C CIRCLING	4240-1 1/2	1062 (1100-1 1/2)	NA

SE-2, 16 JUN 2022 to 14 JUL 2022

SE-2, 16 JUN 2022 to 14 JUL 2022