

| | | | |
|--|------------------------|-----------------------------|---|
| WAAS CH 70437 W28A | APP CRS 276° | Rwy Idg TDZE Apt Elev | 5002 3142 3178 |
|--|------------------------|-----------------------------|---|

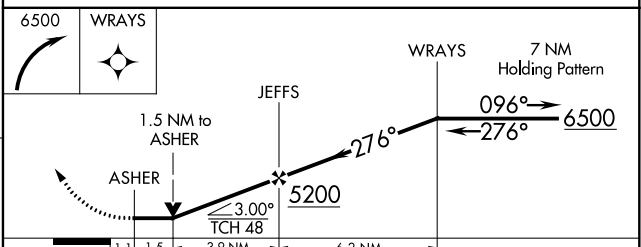
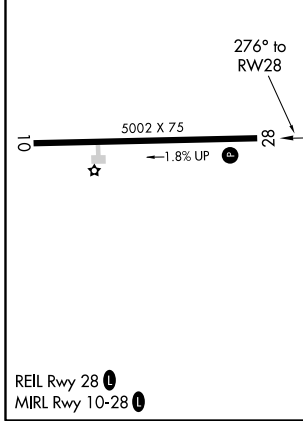
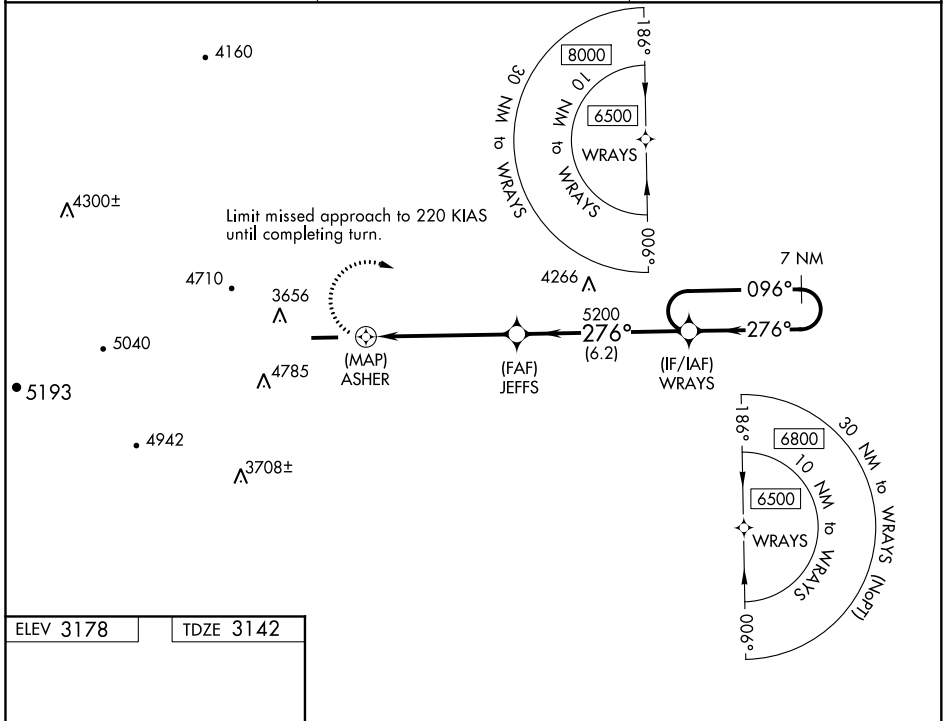
RNAV (GPS) RWY 28

ASHE COUNTY (GEV)

⚠ Circling Rwy 10 NA at night. Circling NA for Cat D north of Rwy 10-28. DME/DME RNP-0.3 NA. Rwy 28 helicopter visibility reduction below 3/4 SM NA. VDP NA when using Marion/Wytheville altimeter setting. When local altimeter setting not received, use Marion/Wytheville altimeter setting and increase all MDA 160 feet and LP and LNAV Cat B visibility 1/4 mile and LP and LNAV Cats C/D visibility 1/2 mile. Cats C/D Circling NA when using Marion/Wytheville altimeter setting.

⚠ MISSED APPROACH: Climbing right turn to 6500 direct WRAYS and hold.

| | | |
|--------------------------|---------------------------------------|---------------------------------|
| AWOS-3 120.675 | ATLANTA CENTER 125.15 263.0 | UNICOM 122.8 (CTAF) ① |
|--------------------------|---------------------------------------|---------------------------------|



| CATEGORY | A | B | C | D |
|-------------------|---------------------------|---------------------------|---------|---------------|
| LP MDA | 3960-1¼ | 818 (800-1¼) | 3960-2½ | 818 (800-2½) |
| LNAV MDA | 4060-1¼ | 918 (900-1¼) | 4060-2½ | 918 (900-2½) |
| C CIRCLING | 4240-1¼ 1062 (1100-1¼) | 4240-1½ 1062 (1100-1½) | 5140-3 | 1962 (2000-3) |

SE-2, 16 JUN 2022 to 14 JUL 2022

SE-2, 16 JUN 2022 to 14 JUL 2022