

GARLAND THREE DEPARTURE  
(GARL3.TT) 24MAR22

ENNIS, TEXAS  
ENNIS MUNI (F41)

CTAF  
122.9  
REGIONAL DEP CON  
125.2 343.65

TAKEOFF MINIMUMS  
Rwys 16, 34: Standard.

NOTE: SOLDO Transition: ATC assigned.  
NOTE: RADAR required.  
NOTE: DME required.

MAVERICK  
113.1 TTT  
Chan 78  
N32°52.15'-W97°02.43'

BONHAM  
114.6 BYP  
Chan 93  
N33°04.94'-W96°19.96'

PARIS  
113.6 PRX  
Chan 83  
N33°32.54'-W95°26.90'

TEXARKANA  
116.3 TXK  
Chan 110  
N33°30.83'-W94°04.39'

NOBLY  
N33°04.94'  
W96°19.96'

TRISS  
N32°58.20'  
W96°19.94'

SOLDO  
N32°51.92'  
W96°19.94'

CLARE  
N32°45.66'  
W96°19.93'

ECKEY  
N33°13.01'  
W95°52.66'

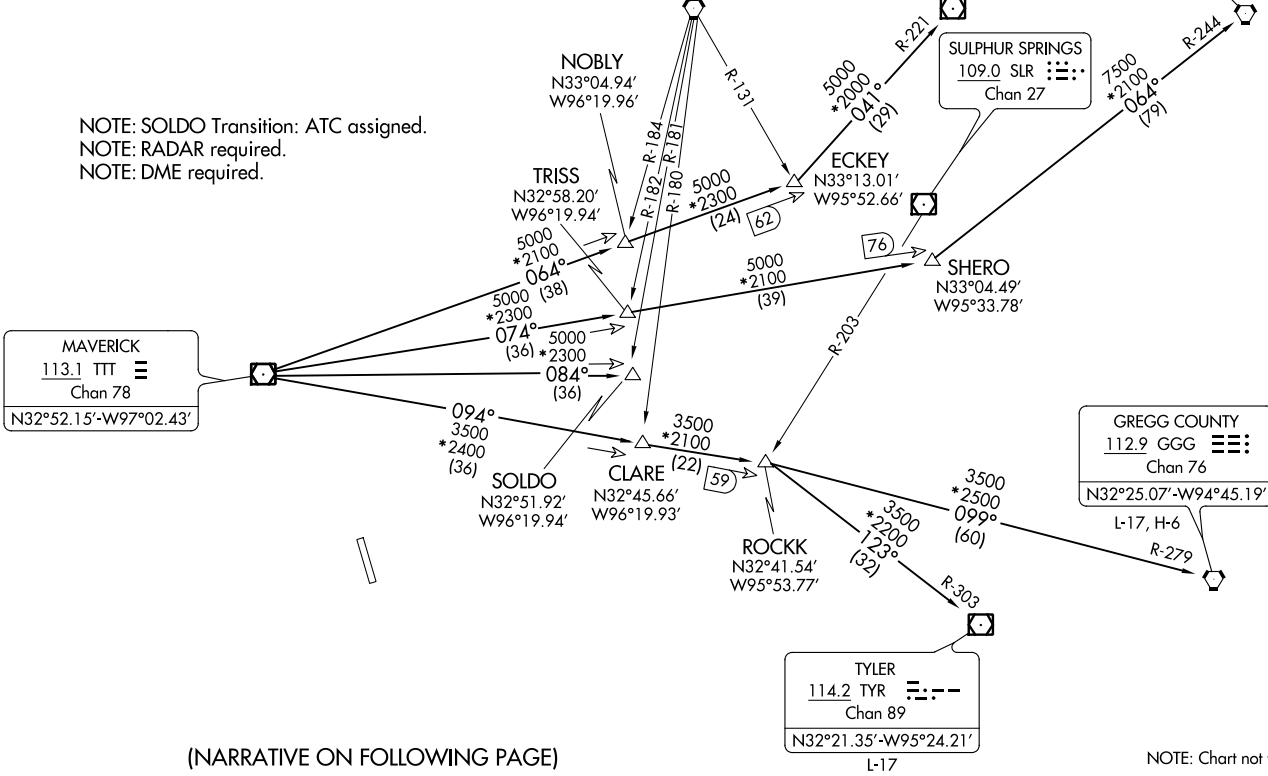
ROCK  
N32°41.54'  
W95°53.77'

TYLER  
114.2 TYR  
Chan 89  
N32°21.35'-W95°24.21'

SULPHUR SPRINGS  
109.0 SLR  
Chan 27

SHERO  
N33°04.49'  
W95°33.78'

GREGG COUNTY  
112.9 GGG  
Chan 76  
N32°25.07'-W94°45.19'



(NARRATIVE ON FOLLOWING PAGE)

NOTE: Chart not to scale.

(GARL3.TT) 22083  
GARLAND THREE DEPARTURE

AL-6830 (FAA)

ENNIS MUNI (F41)  
ENNIS, TEXAS

# GARLAND THREE DEPARTURE



## DEPARTURE ROUTE DESCRIPTION

When entering controlled airspace, fly assigned heading and altitude for vector to appropriate route.

GREGG COUNTY TRANSITION (GARL3.GGG): From over TTT VOR/DME on TTT R-094 to ROCKK, then on GGG R-279 to GGG VORTAC.

PARIS TRANSITION (GARL3.PRX): From over TTT VOR/DME on TTT R-064 to ECKEY, then on PRX R-221 to PRX VOR/DME.

SOLDO TRANSITION (GARL3.SOLDO): From over TTT VOR/DME on TTT R-084 to SOLDO.

TEXARKANA TRANSITION (GARL3.TXK): From over TTT VOR/DME on TTT R-074 to SHERO, then on TXK R-244 to TXK VORTAC.

TYLER TRANSITION (GARL3.TYR): From over TTT VOR/DME on TTT R-094 to ROCKK, then on TYR R-303 to TYR VOR/DME.

SC-2, 16 JUN 2022 to 14 JUL 2022

SC-2, 16 JUN 2022 to 14 JUL 2022