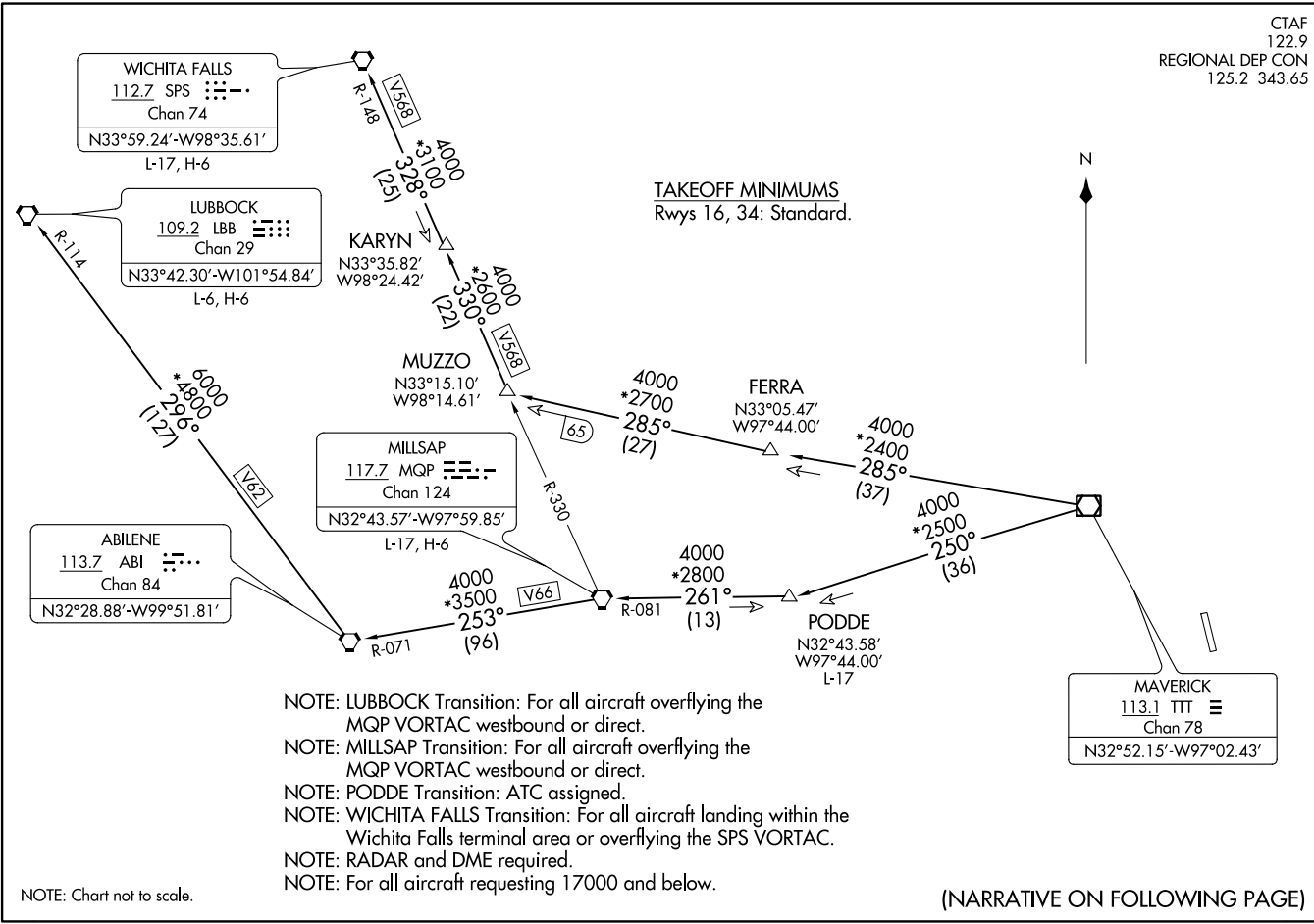


CTAF
122.9
REGIONAL DEP CON
125.2 343.65

KINGDOM THREE DEPARTURE



- NOTE: LUBBOCK Transition: For all aircraft overflying the MQP VORTAC westbound or direct.
- NOTE: MILLSAP Transition: For all aircraft overflying the MQP VORTAC westbound or direct.
- NOTE: PODDE Transition: ATC assigned.
- NOTE: WICHITA FALLS Transition: For all aircraft landing within the Wichita Falls terminal area or overflying the SPS VORTAC.
- NOTE: RADAR and DME required.
- NOTE: For all aircraft requesting 17000 and below.

NOTE: Chart not to scale.

(NARRATIVE ON FOLLOWING PAGE)

KINGDOM THREE DEPARTURE
(KING3.TTT) 24MAR22

KINGDOM THREE DEPARTURE



DEPARTURE ROUTE DESCRIPTION

Fly assigned heading and altitude, expect vector to appropriate route.

LUBBOCK TRANSITION (KING3.LBB): From over TTT VOR/DME on TTT R-250 to PODDE, then on MQP R-081 to MQP VORTAC, then on MQP R-253 and ABI R-071 to ABI VORTAC, then on ABI R-296 and LBB R-114 to LBB VORTAC.

MILLSAP TRANSITION (KING3.MQP): From over TTT VOR/DME on TTT R-250 to PODDE, then on MQP R-081 to MQP VORTAC.

PODDE TRANSITION (KING3.PODDE): From over TTT VOR/DME on TTT R-250 to PODDE.

WICHITA FALLS TRANSITION (KING3.SPS): From over TTT VOR/DME on TTT R-285 to MUZZO, then on MQP R-330 and SPS R-148 to KARYN, then on SPS R-148 to SPS VORTAC.

SC-2, 16 JUN 2022 to 14 JUL 2022

SC-2, 16 JUN 2022 to 14 JUL 2022