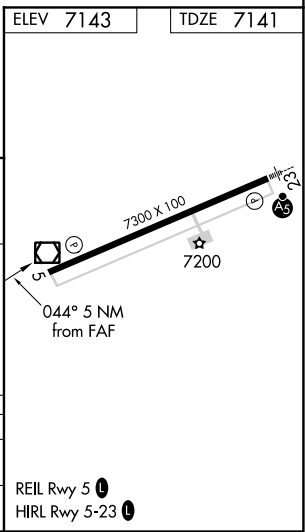
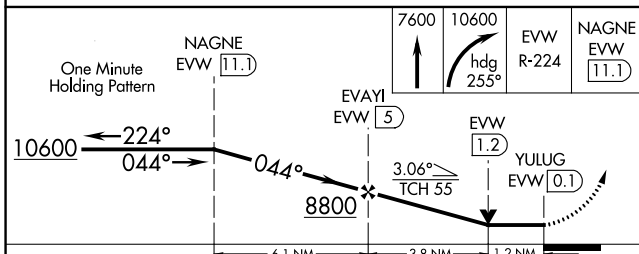
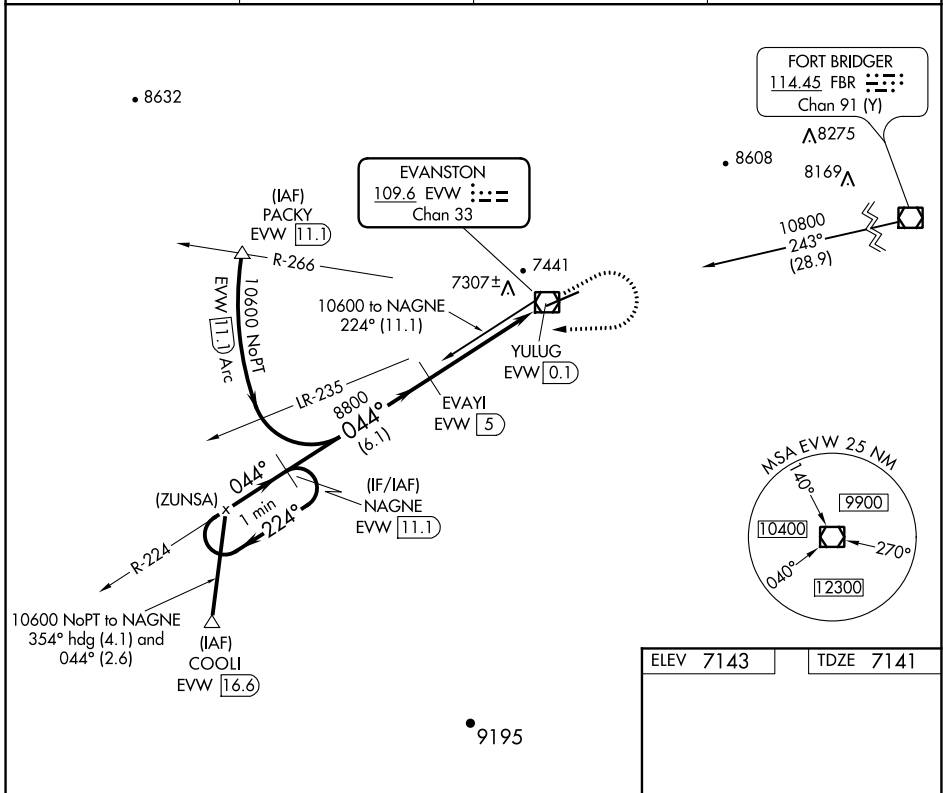


VOR/DME EVW <b>109.6</b> Chan <b>33</b>	APP CRS <b>044°</b>	Rwy Idg TDZE <b>7141</b> Apt Elev <b>7143</b>
---	------------------------	---

# VOR/DME RWY 5

EVANSTON-UINTA COUNTY BURNS FLD (EVW)

<p><b>▽</b> If local altimeter setting not received, procedure NA.</p>		<p>MISSED APPROACH: Climb to 7600, then climbing right turn to 10600 via heading 255° and EVW VOR/DME R-224 to NAGNE/11.1 DME and hold, continue climb-in-hold to 10600.</p>	
ASOS <b>120.0</b>	SALT LAKE CENTER <b>127.7 354.125</b>	GCO <b>121.72</b>	UNICOM <b>123.0 (CTAF)</b> <b>📻</b>



CATEGORY	A	B	C	D
S-5	7560-1	419 (500-1)	7560-1 ¼	419 (500-1 ¼)
CIRCLING	7580-1 437 (500-1)	7720-1 577 (600-1)	7760-1 ¾ 617 (700-1 ¾)	7760-2 617 (700-2)

# VOR/DME RWY 5

NW-1, 16 JUN 2022 to 14 JUL 2022

NW-1, 16 JUN 2022 to 14 JUL 2022