

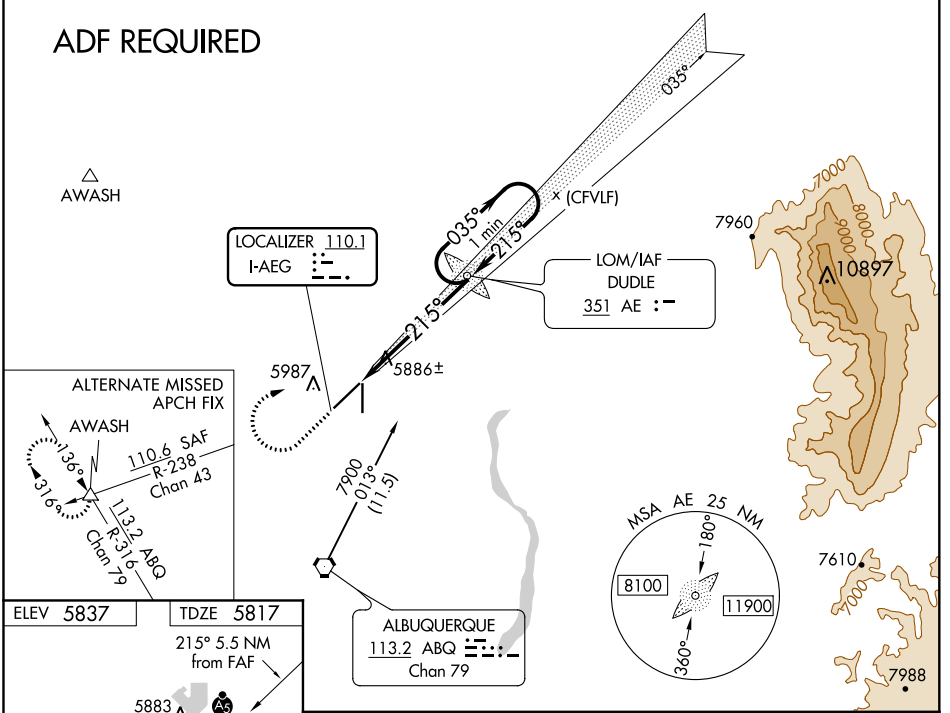
LOC I-AEG 110.1	APP CRS 215°	Rwy Idg 7398 TDZE 5817 Apt Elev 5837
---------------------------	------------------------	--

ILS or LOC RWY 22

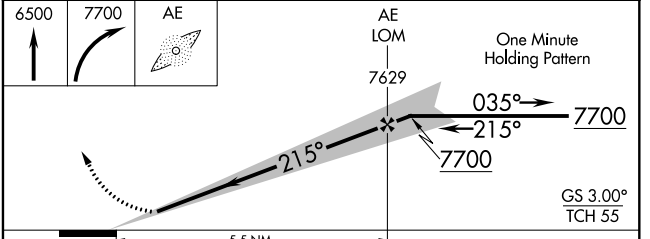
DOUBLE EAGLE II (A/E/G)

<p>⚠ NA Autopilot coupled approach NA. When local altimeter setting not received, use Albuquerque Intl Support altimeter setting and increase all DA 94 feet, increase all MDA 100 feet, and increase visibility S-LOC 22 Cats C/D ¼ mile, Circling Cats C/D ½ mile. For inop MALSAR when using Albuquerque Intl Support altimeter setting, increase visibility S-ILS 22 all Cats ¾ mile.</p>		<p>MALSAR</p>	<p>MISSED APPROACH: Climb to 6500 then climbing right turn 7700 direct DUDLE LOM and hold.</p>
<p>ATIS 119.025</p>	<p>ALBUQUERQUE APP CON 127.4 253.5</p>	<p>DOUBLE EAGLE II TOWER * 120.15 (CTAF)</p>	<p>GND CON 121.625</p>
			<p>CLNC DEL 124.8 (When twr closed)</p>

ADF REQUIRED



ELEV 5837	TDZE 5817
215° 5.5 NM from FAF	
REIL Rwy 17 and 35	
MIRL Rwy 4-22 and 17-35	
FAF to MAP 5.5 NM	
Knots	60 90 120 150 180
Min:Sec	5:30 3:40 2:45 2:12 1:50



CATEGORY	A	B	C	D
S-ILS 22	6017-½ 200 (200-½)			
S-LOC 22	6140-½ 323 (400-½)			
CIRCLING	6400-1	563 (600-1)	6420-1½ 583 (600-1½)	6640-2½ 803 (900-2½)

SW-1, 16 JUN 2022 to 14 JUL 2022

SW-1, 16 JUN 2022 to 14 JUL 2022