

WAAS CH 56339 W04A	APP CRS 035°	Rwy Idg 7398 TDZE 5837 Apt Elev 5837
--	------------------------	---

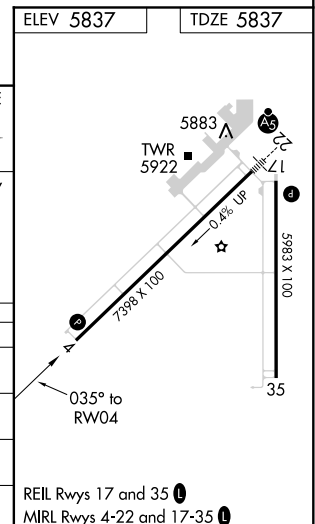
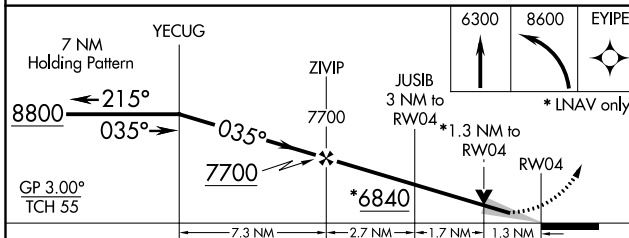
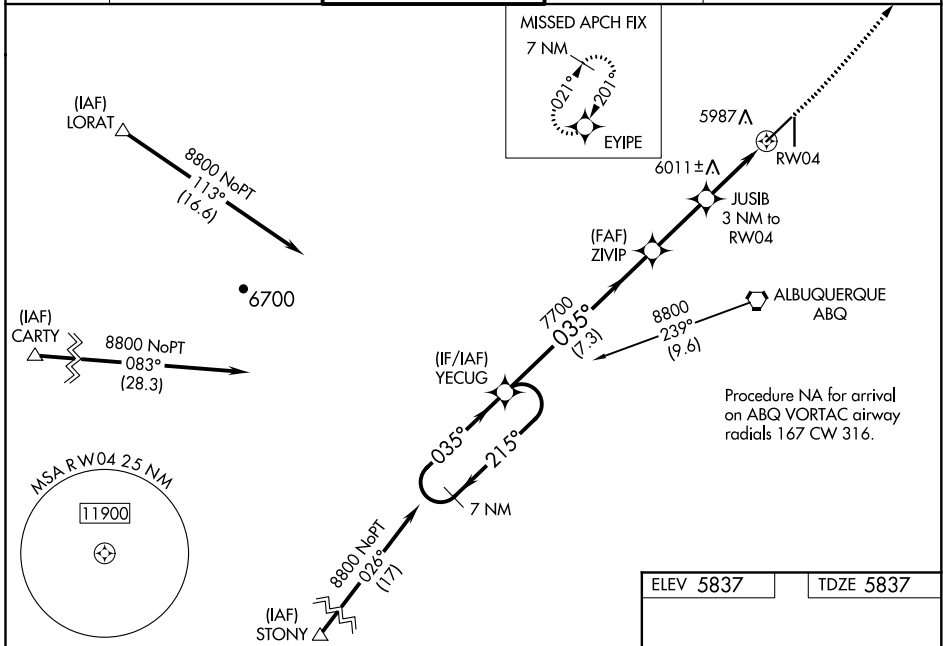
RNAV (GPS) RWY 4

DOUBLE EAGLE II (A/E/G)

⚠ DME/DME RNP-0.3 NA. When local altimeter setting not received, use Albuquerque Intl Support altimeter setting and increase LPV DA to 6131 feet and LNAV/VNAV DA to 6384 feet, increase all MDA 100 feet, and increase LPV all Cats visibility 1/8 mile, LNAV/VNAV all Cats visibility 3/8 mile, LNAV visibility Cat C/D 1/2 mile, and Circling visibility Cats C/D 1/2 mile. Baro-VNAV and VDP NA when using Albuquerque Intl Support altimeter setting. For uncompensated Baro-VNAV systems, LNAV/VNAV NA below -26°C (-14°F) or above 46°C (114°F).

MISSED APPROACH: Climb to 6300 then climbing left turn to 8600 direct EYIPE and hold.

ATIS 119.025	ALBUQUERQUE APP CON 127.4 253.5	DOUBLE EAGLE II TOWER ★ 120.15 (CTAF) 0	GND CON 121.625	CLNC DEL 124.8 (When twr closed)
------------------------	---	--	---------------------------	---



CATEGORY	A	B	C	D
LPV DA	6037-3/4		200 (200-3/4)	
LNAV/VNAV DA	6290-1 1/2		453 (500-1 1/2)	
LNAV MDA	6300-1	463 (500-1)	6300-1 3/8	463 (500-1 3/8)
C CIRCLING	6400-1	563 (600-1)	6420-1 1/2 583 (600-1 1/2)	6640-2 1/2 803 (900-2 1/2)

REIL Rwy 17 and 35 **0**
MIRL Rwy 4-22 and 17-35 **0**

SW-1, 16 JUN 2022 to 14 JUL 2022

SW-1, 16 JUN 2022 to 14 JUL 2022