

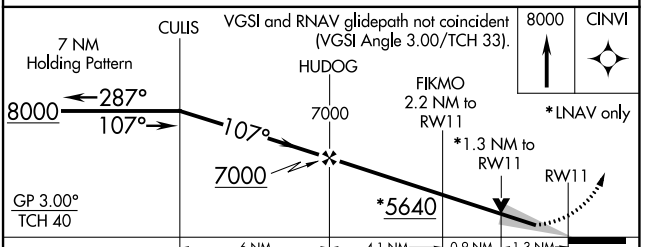
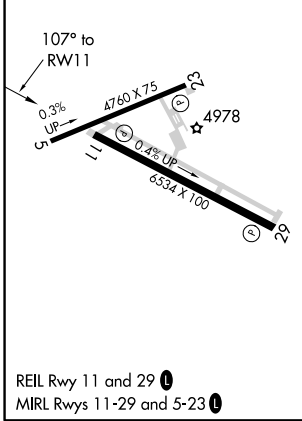
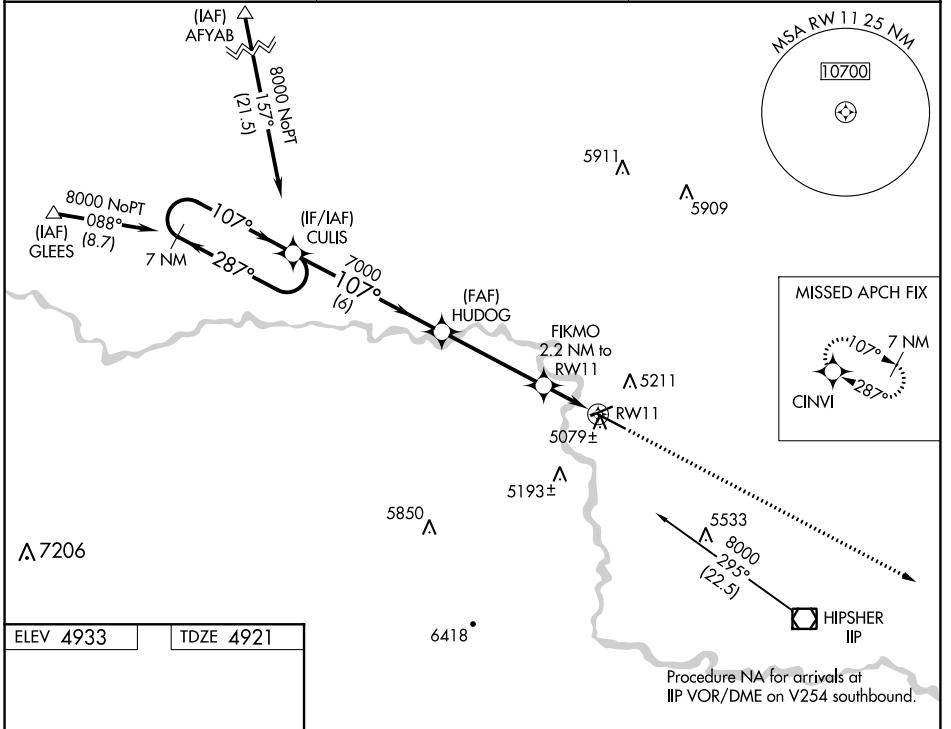
WAAS CH 58018 W11A	APP CRS 107°	Rwy Idg TDZE Apt Elev	6534 4921 4933
--	------------------------	-----------------------------	---

RNAV (GPS) RWY 11

CONVERSE COUNTY (DGW)

RNP APCH.	MISSED APPROACH: Climb to 8000 direct CINVI and hold.
<p>▼ For uncompensated Baro-VNAV systems, LNAV/VNAV NA below -24°C (-11°F) or above 39°C (102°F).</p>	

ASOS 135.225	DENVER CENTER 135.6 363.025	UNICOM 122.8 (CTAF) 0
------------------------	---------------------------------------	---------------------------------



CATEGORY	A	B	C	D
LPV DA	5121-3/4 200 (200-3/4)			
LNAV/VNAV DA	5329-1 1/2 408 (400-1 1/2)			
LNAV MDA	5340-1 419 (500-1)		5340-1 1/4 419 (500-1 1/4)	

NW-1, 16 JUN 2022 to 14 JUL 2022

NW-1, 16 JUN 2022 to 14 JUL 2022