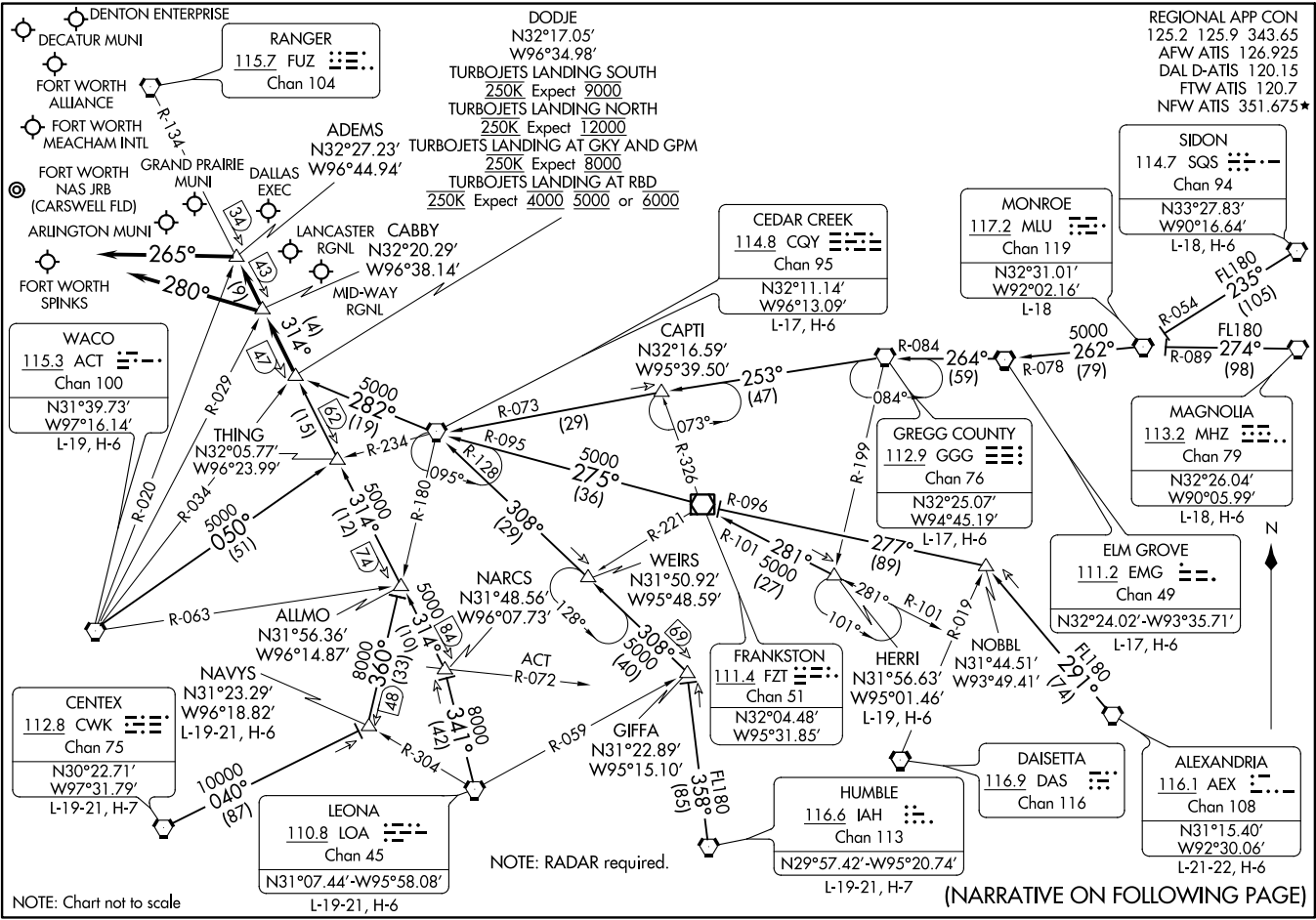


DODJIE SIX ARRIVAL  
(DODJIE:DODJIE6) 21MAY20

DALLAS-FORT WORTH, TEXAS



NOTE: Chart not to scale

NOTE: RADAR required.

(NARRATIVE ON FOLLOWING PAGE)

(DODJIE:DODJIE6) 21112  
DODJIE SIX ARRIVAL

AL-6918 (FAA)

DALLAS-FORT WORTH, TEXAS

REGIONAL APP CON  
 125.2 125.9 343.65  
 AFW ATIS 126.925  
 DAL D-ATIS 120.15  
 FTW ATIS 120.7  
 NFW ATIS 351.675\*

SIDON  
 114.7 SQS  
 Chan 94  
 N33°27.83'  
 W90°16.64'  
 L-18, H-6

MONROE  
 117.2 MLU  
 Chan 119  
 N32°31.01'  
 W92°02.16'  
 L-18

MAGNOLIA  
 113.2 MHZ  
 Chan 79  
 N32°26.04'  
 W90°05.99'  
 L-18, H-6

ELM GROVE  
 111.2 EMG  
 Chan 49  
 N32°24.02'-W93°35.71'  
 L-17, H-6

DAISSETTA  
 116.9 DAS  
 Chan 116

ALEXANDRIA  
 116.1 AEX  
 Chan 108  
 N31°15.40'  
 W92°30.06'  
 L-21-22, H-6

CEDAR CREEK  
 114.8 CQY  
 Chan 95  
 N32°11.14'  
 W96°13.09'  
 L-17, H-6

GREGG COUNTY  
 112.9 GGG  
 Chan 76  
 N32°25.07'  
 W94°45.19'  
 L-17, H-6

FRANKSTON  
 111.4 FZT  
 Chan 51  
 N32°04.48'  
 W95°31.85'  
 L-19, H-6

HUMBLE  
 116.6 IAH  
 Chan 113  
 N29°57.42'-W95°20.74'  
 L-19-21, H-7

DODJIE  
 N32°17.05'  
 W96°34.98'  
 TURBOJETS LANDING SOUTH  
 250K Expect 9000  
 TURBOJETS LANDING NORTH  
 250K Expect 12000  
 TURBOJETS LANDING AT GKY AND GPM  
 250K Expect 8000  
 TURBOJETS LANDING AT RBD  
 250K Expect 4000 5000 or 6000

RANGER  
 115.7 FUZ  
 Chan 104

ADEMS  
 N32°27.23'  
 W96°44.94'

LANCASTER CABBY  
 RGNL N32°20.29'  
 W96°38.14'

THING  
 N32°05.77'  
 W96°23.99'

ALLMO  
 N31°56.36'  
 W96°14.87'

LEONA  
 110.8 LOA  
 Chan 45  
 N31°07.44'-W95°58.08'  
 L-19-21, H-6

NARCS  
 N31°48.56'  
 W96°07.73'

GIFFA  
 N31°22.89'  
 W95°15.10'

NOTE: RADAR required.

ARRIVAL ROUTE DESCRIPTION

ALEXANDRIA TRANSITION (AEX.DODJE6): From over AEX VORTAC on AEX R-291 to NOBBL, then on FZT R-096 to FZT VOR/DME, then on FZT R-275 and CQY R-095 to CQY VORTAC, then on CQY R-282 to DODJE. Thence . . . .

CEDAR CREEK TRANSITION (CGY.DODJE6): From over CQY VORTAC on CQY R-282 to DODJE. Thence. . . .

CENTEX TRANSITION (CWK.DODJE6): From over CWK VORTAC on CWK R-040 to NAVYS, then on CQY R-180 to ALLMO, then on FUZ R-134 to DODJE. Thence . . . .

ELM GROVE TRANSITION (EMG.DODJE6): From over EMG VORTAC on EMG R-264 and GGG R-084 to GGG VORTAC, then on GGG R-253 and CQY R-073 to CAPTI, then on CQY R-073 to CQY VORTAC, then on CQY R-282 to DODJE. Thence . . . .

GREGG COUNTY TRANSITION (GGG.DODJE6): From over GGG VORTAC on GGG R-253 and CQY R-073 to CAPTI, then on CQY R-073 to CQY VORTAC, then on CQY R-282 to DODJE. Thence . . . .

HERRI TRANSITION (HERRI.DODJE6): From over HERRI on FZT R-101 to FZT VOR/DME, then on FZT R-275 and CQY R-095 to CQY VORTAC, then on CQY R-282 to DODJE. Thence . . . .

HUMBLE TRANSITION (IAH.DODJE6): From over IAH VORTAC on IAH R-358 to GIFFA, then on CQY R-128 to CQY VORTAC, then on CQY R-282 to DODJE. Thence . . . .

LEONA TRANSITION (LOA.DODJE6): From over LOA VORTAC on LOA R-341 to NARCS, then on FUZ R-134 to DODJE. Thence . . . .

MAGNOLIA TRANSITION (MHZ.DODJE6): From over MHZ VORTAC on MHZ R-274 and MLU R-089 to MLU VORTAC, then on MLU R-262 and EMG R-078 to EMG VORTAC, then on EMG R-264 and GGG R-084 to GGG VORTAC, then on GGG R-253 and CQY R-073 to CAPTI, then on CQY R-073 to CQY VORTAC, then on CQY R-282 to DODJE. Thence . . . .

MONROE TRANSITION (MLU.DODJE6): From over MLU VORTAC on MLU R-262 and EMG R-078 to EMG VORTAC, then on EMG R-264 and GGG R-084 to GGG VORTAC, then on GGG R-253 and CQY R-073 to CAPTI, then on CQY R-073 to CQY VORTAC, then on CQY R-282 to DODJE. Thence . . . .

NAVYS TRANSITION (NAVYS.DODJE6): From over NAVYS on CQY R-180 to ALLMO, then on FUZ R-134 to DODJE. Thence . . . .

SIDON TRANSITION (SQS.DODJE6): From over SQS VORTAC on SQS R-235 and MLU R-054 to MLU VORTAC, then on MLU R-262 and EMG R-078 to EMG VORTAC, then on EMG R-264 and GGG R-084 to GGG VORTAC, then on GGG R-253 and CQY R-073 to CAPTI, then on CQY R-073 to CQY VORTAC, then on CQY R-282 to DODJE. Thence . . . .

WACO TRANSITION (ACT.DODJE6): From over ACT VORTAC on ACT R-050 and CQY R-234 to THING, then on FUZ R-134 to DODJE. Thence . . . .

. . . . from over DODJE on FUZ R-134 to CABBY or ADEMS (when directed by ATC).

Depart CABBY heading 280°. Expect RADAR vectors to final approach course.

Depart ADEMS heading 265°. Expect RADAR vectors to final approach course.