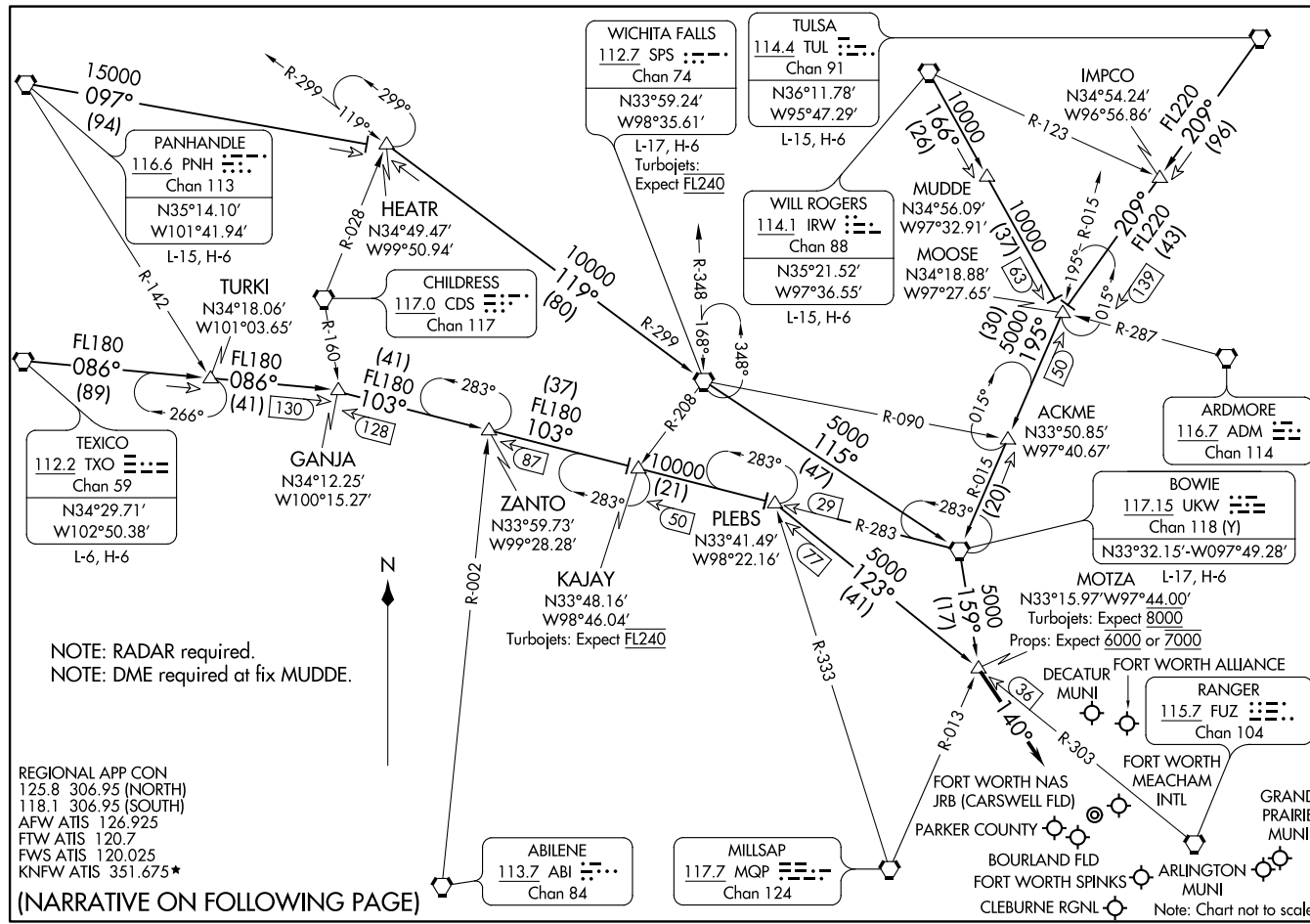


MOTZA ONE ARRIVAL  
(MOTZA, MOTZA1) 17JUN21

(MOTZA, MOTZA1) 21168  
MOTZA ONE ARRIVAL

AL-6918 (FAA)

FORT WORTH, TEXAS



NOTE: RADAR required.  
NOTE: DME required at fix MUDDIE.

REGIONAL APP CON  
 125.8 306.95 (NORTH)  
 118.1 306.95 (SOUTH)  
 AFW ATIS 126.925  
 FTW ATIS 120.7  
 FWS ATIS 120.025  
 KNFW ATIS 351.675\*

(NARRATIVE ON FOLLOWING PAGE)

FORT WORTH, TEXAS

FORT WORTH, TEXAS

Note: Chart not to scale.

ARRIVAL ROUTE DESCRIPTION

BOWIE TRANSITION (UKW.MOTZA1): From over UKW VORTAC on UKW R-159 to MOTZA. Thence . . . .

MUDDE TRANSITION (MUDDE.MOTZA1): From over MUDDE on IRW R-166 to MOOSE, then on UKW R-015 to UKW VORTAC, then on UKW R-159 to MOTZA. Thence . . . .

PANHANDLE TRANSITION (PNH.MOTZA1): From over PNH VORTAC on PNH R-097 to HEATR, then on SPS R-299 to SPS VORTAC, then on SPS R-115 and UKW R-299 to UKW VORTAC, then on UKW R-159 to MOTZA. Thence . . . .

TEXICO TRANSITION (TXO.MOTZA1): From over TXO VORTAC on TXO R-086 to GANJA, then on UKW R-283 to PLEBS, then on FUZ R-303 to MOTZA. Thence . . . .

TULSA TRANSITION (TUL.MOTZA1): From over TUL VORTAC on TUL R-209 to MOOSE, then on UKW R-015 to UKW VORTAC, then on UKW R-159 to MOTZA. Thence . . . .

TURKI TRANSITION (TURKI.MOTZA1): From over TURKI on TXO R-086 to GANJA, then on UKW R-283 to PLEBS, then on FUZ R-303 to MOTZA. Thence . . . .

WICHITA FALLS TRANSITION (SPS.MOTZA1): From over SPS VORTAC on SPS R-115 and UKW R-299 to UKW VORTAC, then on UKW R-159 to MOTZA. Thence . . . .

WILL ROGERS TRANSITION (IRW.MOTZA1): From over IRW VORTAC on IRW R-166 to MOOSE, then on UKW R-015 to UKW VORTAC, then on UKW R-159 to MOTZA. Thence . . . .

. . . . From over MOTZA heading 140° for vectors to final approach course.

SC-2, 16 JUN 2022 to 14 JUL 2022

SC-2, 16 JUN 2022 to 14 JUL 2022