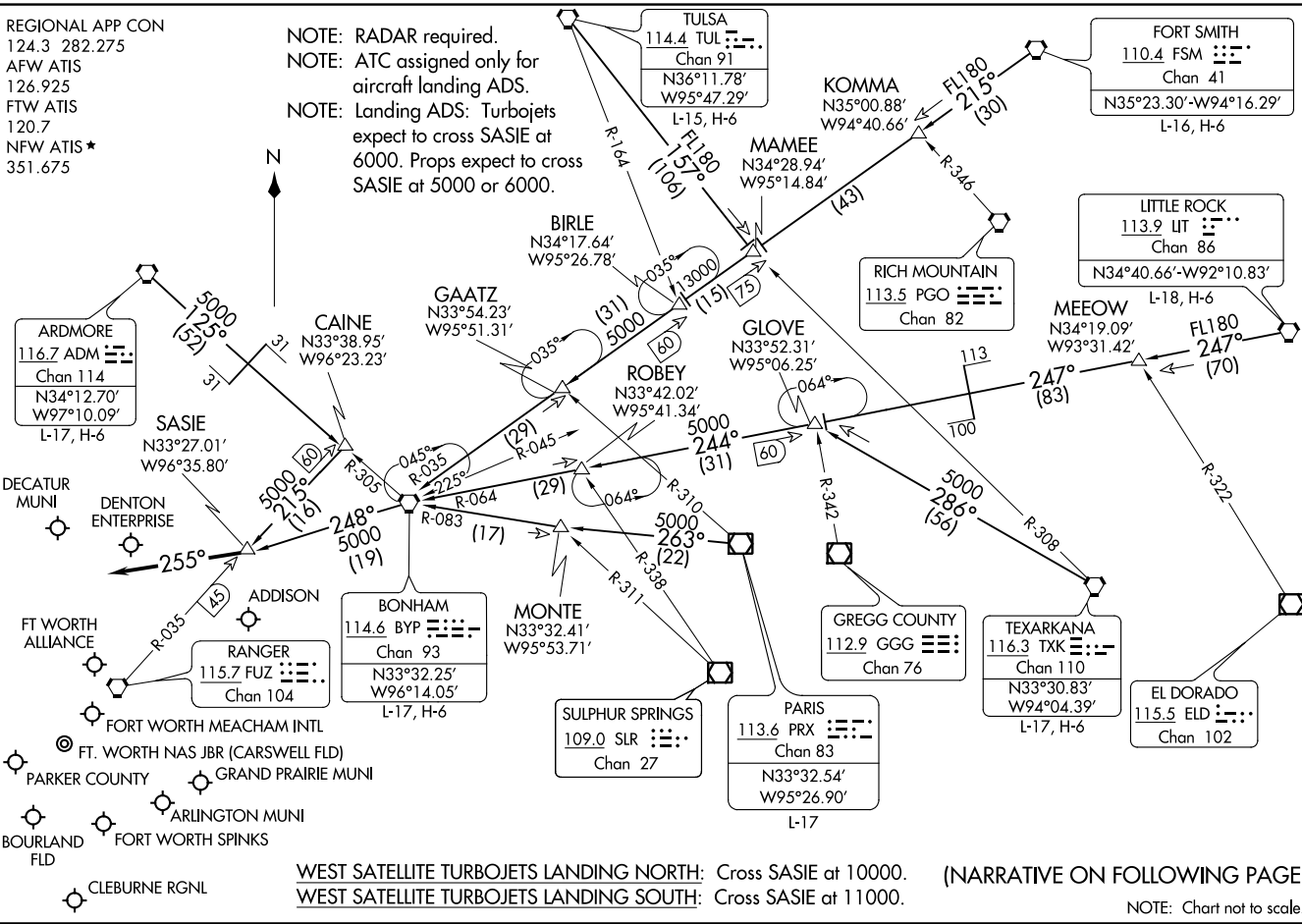


SASIE SIX ARRIVAL  
(SASIE: SASIE6) 05DECI19

REGIONAL APP CON  
124.3 282.275  
AFW ATIS  
126.925  
FTW ATIS  
120.7  
NFW ATIS ★  
351.675

NOTE: RADAR required.  
NOTE: ATC assigned only for  
aircraft landing ADS.  
NOTE: Landing ADS: Turbojets  
expect to cross SASIE at  
6000. Props expect to cross  
SASIE at 5000 or 6000.



(NARRATIVE ON FOLLOWING PAGE)

NOTE: Chart not to scale.

(SASIE: SASIE6) 22139  
SASIE SIX ARRIVAL

AL-6918 (FAA)

DALLAS-FORT WORTH, TEXAS

DALLAS-FORT WORTH, TEXAS

ARRIVAL ROUTE DESCRIPTION

ARDMORE TRANSITION (ADM.SASIE6): From over ADM VORTAC on ADM R-125 and BYP R-305 to CAINE, then on FUZ R-035 to SASIE. Thence . . . .

BONHAM TRANSITION (BYP.SASIE6): From over BYP VORTAC on BYP R-248 to SASIE. Thence . . . .

CAINE TRANSITION (CAINE.SASIE6): From over CAINE on FUZ VORTAC R-035 to SASIE. Thence . . . .

FORT SMITH TRANSITION (FSM.SASIE6): From over FSM VORTAC on FSM R-215 to MAMEE, then on BYP R-035 to BYP VORTAC, then on BYP R-248 to SASIE. Thence . . . .

LITTLE ROCK TRANSITION (LIT.SASIE6): From over LIT VORTAC on LIT R-247 to MEEOW, then on LIT R-247 and BYP R-064 to GLOVE, then on BYP R-064 to BYP VORTAC, then on BYP R-248 to SASIE. Thence . . . .

PARIS TRANSITION (PRX.SASIE6): From over PRX VOR/DME on PRX R-263 and BYP R-083 to MONTE, then on BYP R-083 to BYP VORTAC, then on BYP R-248 to SASIE. Thence . . . .

TEXARKANA TRANSITION (TXK.SASIE6): From over TXK VORTAC on TXK R-286 to GLOVE, then on BYP R-064 to BYP VORTAC, then on BYP R-248 to SASIE. Thence . . . .

TULSA TRANSITION (TUL.SASIE6): From over TUL VORTAC on TUL R-157 to MAMEE, then on BYP R-035 to BYP VORTAC, then on BYP R-248 to SASIE. Thence . . . .

. . . . from SASIE, then on heading 255° or as assigned by ATC. Expect RADAR vectors to final approach course.

SC-2, 16 JUN 2022 to 14 JUL 2022

SC-2, 16 JUN 2022 to 14 JUL 2022