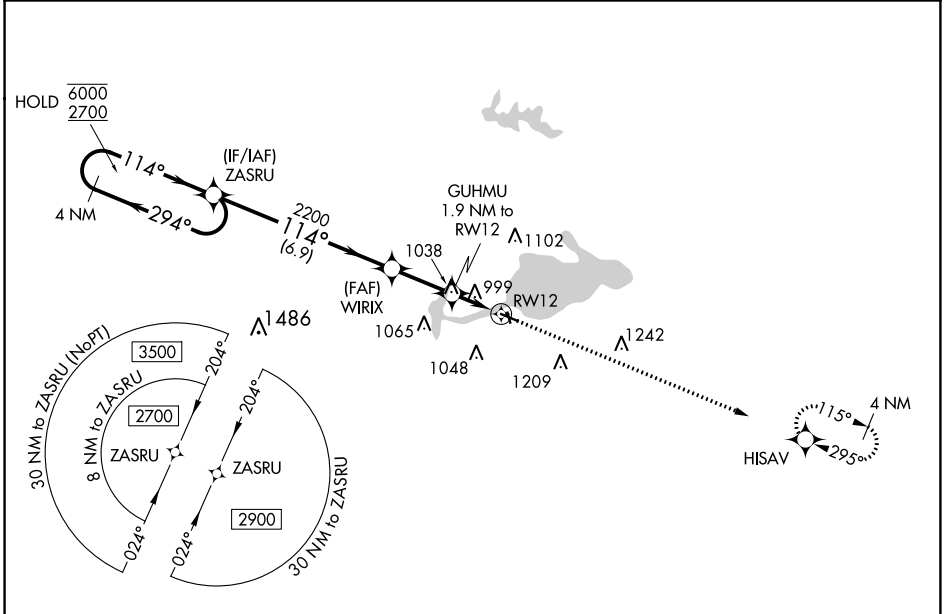


WAAS CH 86429 W12A	APP CRS 114°	Rwy Idg TDZE Apt Elev	3899 811 813
--	------------------------	-----------------------------	---

RNAV (GPS) RWY 12

SHAWANO MUNI (E/ZS)

RNP APCH - GPS.		MISSED APPROACH: Climb to 2500 direct HISAV and hold.
<p>▼ Rwy 12 helicopter visibility reduction below 1 SM NA. For uncompensated Baro-VNAV systems, LNAV/VNAV NA below -16°C or above 54°C. Straight-in Rwy 12 and Circling Rwy 12, 35 NA at night.</p> <p>▲</p>		
AWOS-3 118.65	GREEN BAY APP CON ★ 119.4 338.2	UNICOM 122.8 (CTAF) 0



EC-3, 16 JUN 2022 to 14 JUL 2022

EC-3, 16 JUN 2022 to 14 JUL 2022

		ELEV 813	TDZE 811	
<p>4 NM Holding Pattern ZASRU</p> <p>6000 ← 294°</p> <p>2700 → 114°</p> <p>GP 3.00° TCH 45</p>		<p>2500 ↑</p> <p>HISAV</p>	<p>114° to RWY 12</p> <p>3899 X 75</p> <p>2225 X 80</p> <p>35</p>	
<p>WIRIX 2200</p> <p>GUHMU 1.9 NM to RWY 12</p> <p>RWY 12</p> <p>6.9 NM 2.3 NM 1.9 NM</p>				
CATEGORY	A	B	C	D
LPV DA	1082-1		271 (300-1)	
LNAV/VNAV DA	1378-1½		567 (600-1½)	
LNAV MDA	1300-1	489 (500-1)	1300-1¾	489 (500-1¾)
C CIRCLING	1340-1 527 (600-1)	1440-1 627 (700-1)	1680-2½ 867 (900-2½)	1680-2¾ 867 (900-2¾)
				<p>WATER ALL-WAY: 12000 X 1000</p> <p>MIRL Rwy 12-30 and 17-35 0</p> <p>REIL Rwy 30 0</p>