

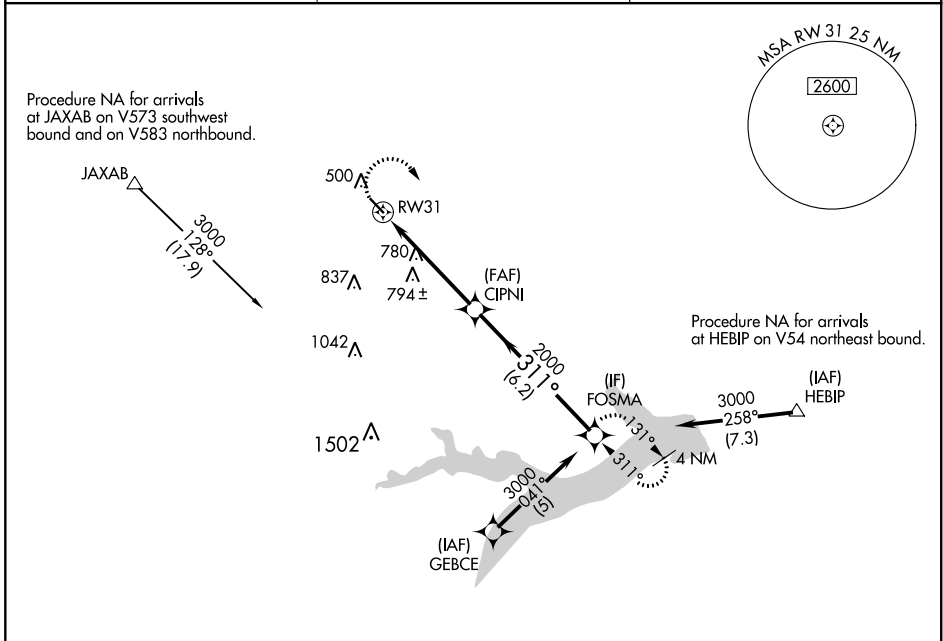
APP CRS <b>311°</b>	Rwy Idg <b>3900</b>
	TDZE <b>412</b>
	Apt Elev <b>412</b>

# RNAV (GPS) RWY 31

FRANKLIN COUNTY (F53)

RNP APCH:	<p>⚠ Circling Rwy 13 NA at night. Rwy 31 helicopter visibility reduction below 3/4 SM NA.                  ⚠ NA Use Mount Pleasant Rgnl altimeter setting; when not received, procedure NA.</p>	MISSED APPROACH: Climbing right turn to 3000 direct FOSMA and hold.
-----------	---	---

OSA AWOS-3 <b>119.775</b>	FORT WORTH CENTER <b>132.025 360.75</b>	UNICOM <b>123.0</b> (CTAF)
------------------------------	--	-------------------------------



SC-2, 16 JUN 2022 to 14 JUL 2022

SC-2, 16 JUN 2022 to 14 JUL 2022

	ELEV 412	TDZE 412	
--	----------	----------	--

3000 FOSMA

CATEGORY	A	B	C	D
LNVA MDA	1160-1 748 (800-1)	1160-1¼ 748 (800-1¼)	NA	
CIRCLING	1160-1 748 (800-1)	1160-1¼ 748 (800-1¼)	NA	

MIRL Rwy 13-31