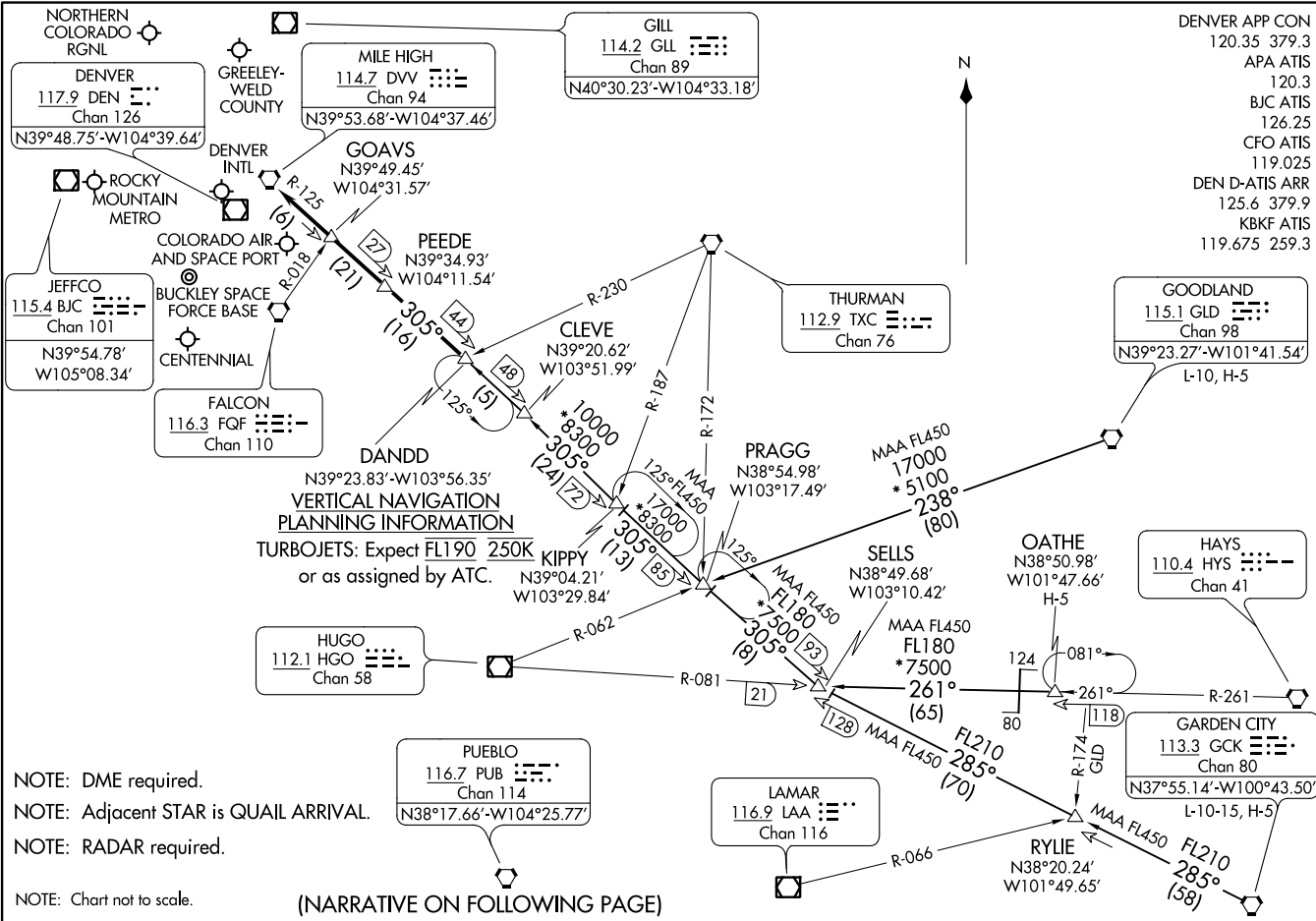


DANDD ONE ARRIVAL  
(DANDD, DANDD1) 30ANZ0

DENVER, COLORADO



NOTE: DME required.  
 NOTE: Adjacent STAR is QUAIL ARRIVAL.  
 NOTE: RADAR required.

NOTE: Chart not to scale.  
 (NARRATIVE ON FOLLOWING PAGE)

(DANDD, DANDD1) 21336  
DANDD ONE ARRIVAL

AL-9077 (FAA)

DENVER, COLORADO

- DENVER APP CON 120.35 379.3
- APA ATIS 120.3
- BJC ATIS 126.25
- CFO ATIS 119.025
- DEN D-ATIS ARR 125.6 379.9
- KBKF ATIS 119.675 259.3

**GOODLAND**  
 115.1 GLD  
 Chan 98  
 N39°23.27'-W101°41.54'  
 L-10, H-5

**HAYS**  
 110.4 HYS  
 Chan 41

**GARDEN CITY**  
 113.3 GCK  
 Chan 80  
 N37°55.14'-W100°43.50'  
 L-10-15, H-5

**GILL**  
 114.2 GLL  
 Chan 89  
 N40°30.23'-W104°33.18'

**MILE HIGH**  
 114.7 DVV  
 Chan 94  
 N39°53.68'-W104°37.46'

**DENVER**  
 117.9 DEN  
 Chan 126  
 N39°48.75'-W104°39.64'

**JEFFCO**  
 115.4 BJC  
 Chan 101  
 N39°54.78'-W105°08.34'

**FALCON**  
 116.3 FQF  
 Chan 110

**DANDD**  
 N39°23.83'-W103°56.35'  
**VERTICAL NAVIGATION PLANNING INFORMATION**  
 TURBOJET: Expect FL190 250K  
 or as assigned by ATC.

**HUGO**  
 112.1 HGO  
 Chan 58

**PUEBLO**  
 116.7 PUB  
 Chan 114  
 N38°17.66'-W104°25.77'

**LAMAR**  
 116.9 LAA  
 Chan 116

ARRIVAL ROUTE DESCRIPTION

GARDEN CITY TRANSITION (GCK.DANDD1): From over GCK VORTAC on GCK R-285 and DVV R-125 to DANDD. Thence. . . .

GOODLAND TRANSITION (GLD.DANDD1): From over GLD VORTAC on GLD R-238 and DVV R-125 to DANDD. Thence. . . .

OATHE TRANSITION (OATHE.DANDD1): From over OATHE on HYS R-261 and HGO R-081 to SELLS, then on DVV R-125 to DANDD. Thence. . . .

. . . .from over DANDD on DVV R-125 to DVV VORTAC. Expect RADAR vectors to the final approach course at or before DVV VORTAC.

SW-1, 16 JUN 2022 to 14 JUL 2022

SW-1, 16 JUN 2022 to 14 JUL 2022