

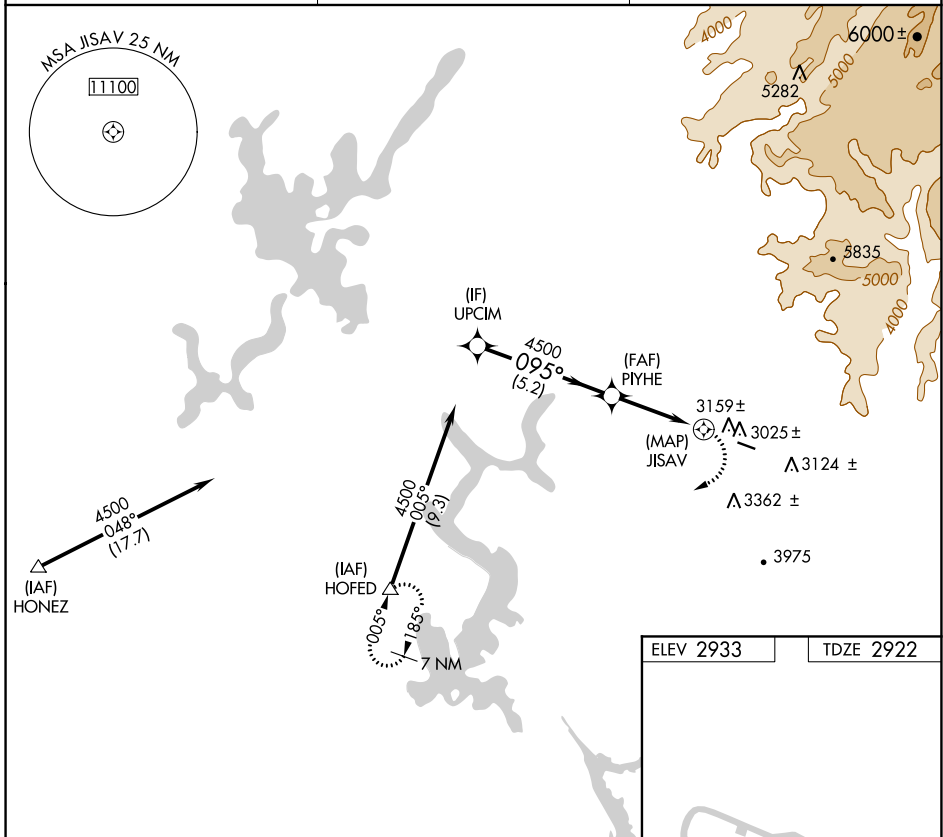
APP CRS	Rwy Idg	3624
095°	TDZE	2922
	Apt Elev	2933

RNAV (GPS) RWY 9

PINE MOUNTAIN LAKE (E45)

RNP APCH-GPS.	MISSED APPROACH: Climbing right turn to 7000 direct HOFED and hold, continue climb-in-hold to 7000.
<p>Procedure NA at night. Rwy 9 helicopter visibility reduction below 1 SM NA. Use Columbia altimeter setting.</p>	

O22 AWOS-3 124.65	OAKLAND CENTER 121.25 327.0	CTAF 122.90
-----------------------------	---------------------------------------	-----------------------



SW-2, 16 JUN 2022 to 14 JUL 2022

SW-2, 16 JUN 2022 to 14 JUL 2022

VGSI and RNAV glidepath not coincident (VGSI Angle 4.50/TCH 24).		7000	HOFED	
5.2 NM 3.5 NM 1.4 NM				
CATEGORY	A	B	C	D
LNAV MDA	4060-1¾	1138 (1200-1¾)	NA	
MIRL Rwy 9-27				