

RNAV (GPS) RWY 16

AFTON MUNI (AFO)

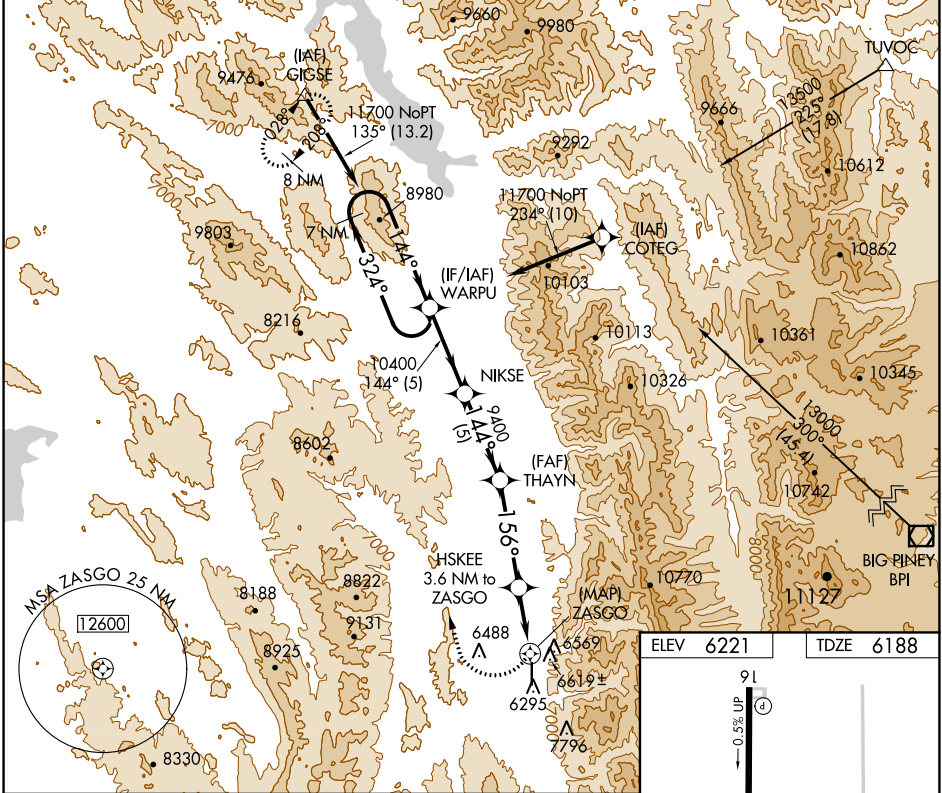
APP CRS 156°	Rwy Idg 7025
	TDZE 6188
	Apt Elev 6221

RNP APCH.

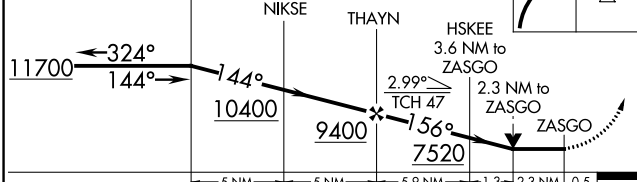
▼ If local altimeter setting not received, procedure NA.
 ▲ NA Circling NA east of Rwy 16-34. Rwy 16 helicopter visibility reduction below ¾ SM NA.
 ❄ -22°C

MISSED APPROACH: Climbing right turn to 11700 direct GIGSE and hold.

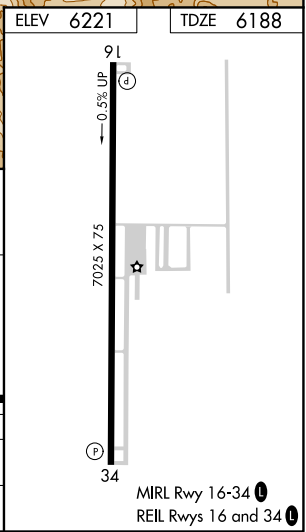
AWOS-3P 119.025	SALT LAKE CENTER 128.35 239.25	UNICOM 122.8 (CTAF) 0
---------------------------	--	---------------------------------



7 NM Holding Pattern WARPU VGSI and descent angles not coincident (VGSI Angle 3.50/TCH 52).



CATEGORY	A	B	C	D
LNVA MDA	7140-1¼ 952 (1000-1¼)	7140-1½ 952 (1000-1½)	7140-3 952 (1000-3)	NA
CIRCLING	7140-1¼ 919 (1000-1¼)	7140-1½ 919 (1000-1½)	7140-3 919 (1000-3)	NA



NW-1, 16 JUN 2022 to 14 JUL 2022

NW-1, 16 JUN 2022 to 14 JUL 2022