

WAAS CH 93723 W01A	APP CRS 008°	Rwy Idg TDZE Apt Elev	5000 436 436
--	------------------------	-----------------------------	---

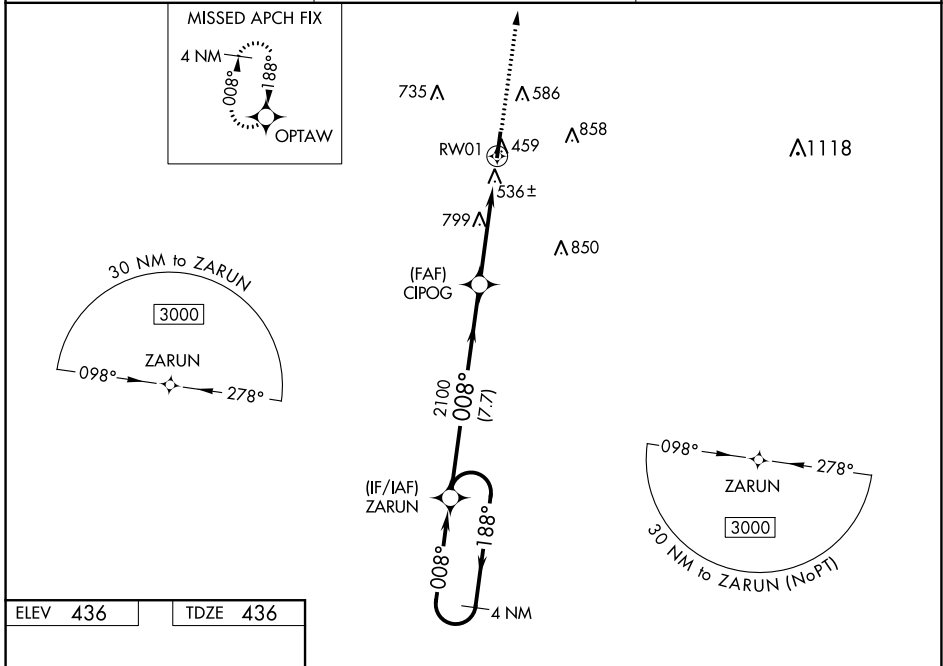
RNAV (GPS) RWY 1

FAYETTE COUNTY (FYE)

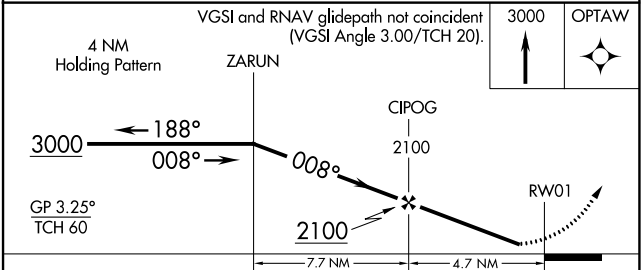
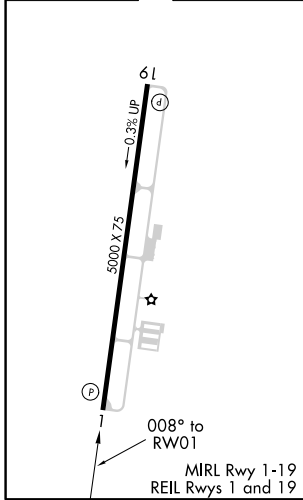
NA Baro-VNAV NA when using Memphis Intl altimeter setting. For uncompensated Baro-VNAV systems, LNAV/VNAV NA below -15°C (5°F) or above 54°C (130°F). DME/DME RNP-0.3 NA. When local altimeter setting not received, use Memphis Intl altimeter setting and increase all DA 84 feet, all MDA 100 feet. Increase LPV all Cats visibility 1/8 mile, LNAV/VNAV all Cats 1/4 mile and LNAV Cat C 1/4 mile. Helicopter visibility reduction below 3/4 SM NA.

MISSED APPROACH:
Climb to 3000 direct OPTAW and hold.

AWOS-3 119.875	MEMPHIS APP CON 125.8 338.3	CTAF 122.9
--------------------------	---------------------------------------	----------------------



ELEV 436	TDZE 436
----------	----------



CATEGORY	A	B	C	D
LPV DA		747-1	311 (400-1)	NA
LNAV/VNAV DA		809-1 1/8	373 (400-1 1/8)	NA
LNAV MDA	1060-1	624 (700-1)	1060-1 3/4 624 (700-1 3/4)	NA
CIRCLING	1060-1	624 (700-1)	1060-1 3/4 624 (700-1 3/4)	NA

SE-1, 16 JUN 2022 to 14 JUL 2022

SE-1, 16 JUN 2022 to 14 JUL 2022