

RNAV (GPS) RWY 15

NEBRASKA CITY MUNI (AFK)

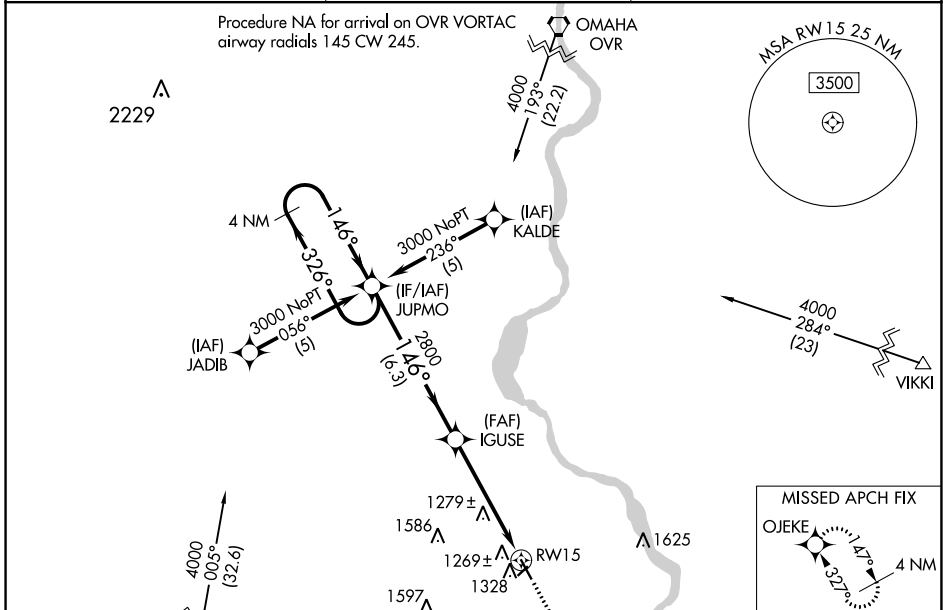
WAAS CH 86407 W15A	APP CRS 146°	Rwy Idg 4501 TDZE 1162 Apt Elev 1165
---------------------------------	------------------------	---

RNP APCH.

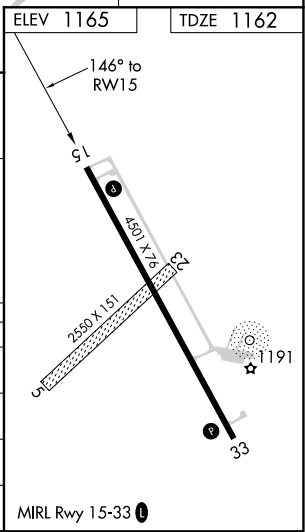
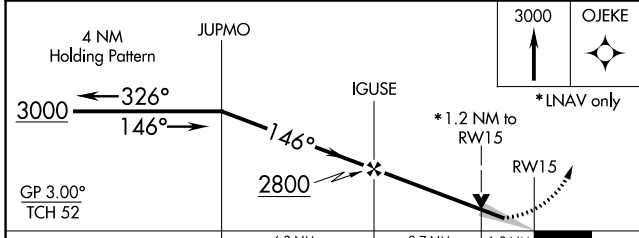
▼ For uncompensated Baro-VNAV systems, LNAV/VNAV NA below -17°C or above 54°C. When local altimeter setting not received, use Omaha altimeter setting and increase all DA 122 feet and all MDA 140 feet, and increase LPV Cat A/B visibility ¼ SM and LNAV/VNAV Cat A/B visibility ½ SM.

MISSED APPROACH: Climb to 3000 direct OJEKE and hold.

AWOS-3PT 128.325	OMAHA APP CON 120.1 354.05	UNICOM 122.7 (CTAF)
----------------------------	--------------------------------------	-------------------------------



ELEV 1165	TDZE 1162
-----------	-----------



CATEGORY	A	B	C	D
LPV DA	1412-1	250 (300-1)		NA
LNAV/VNAV DA	1539-1¼	377 (400-1¼)		NA
LNAV MDA	1580-1	418 (500-1)		NA
CIRCLING	1640-1	475 (500-1)		NA

NC-2, 16 JUN 2022 to 14 JUL 2022

NC-2, 16 JUN 2022 to 14 JUL 2022