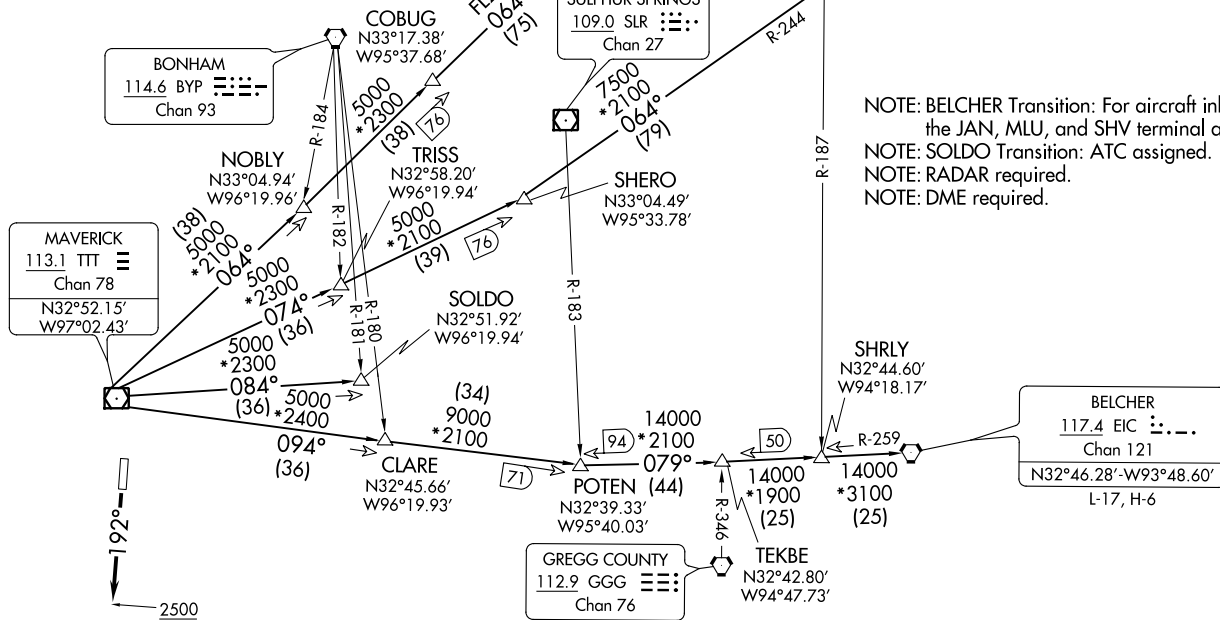


DALLAS ONE DEPARTURE  
(DALL1, TTT) 24MAR22

GRAND PRAIRIE MUNI (GPM)  
GRAND PRAIRIE, TEXAS

GND CON  
121.15  
GRAND PRAIRIE TOWER ★  
128.55 (CTAF)  
REGIONAL DEP CON  
135.975 379.9

**TAKEOFF MINIMUMS**  
Rwy 18: Standard.  
Rwy 36: NA-ATC.



NOTE: BELCHER Transition: For aircraft inbound to the JAN, MLU, and SHV terminal areas only.  
NOTE: SOLDO Transition: ATC assigned.  
NOTE: RADAR required.  
NOTE: DME required.

(NARRATIVE ON FOLLOWING PAGE)

NOTE: Chart not to scale.

(DALL1, TTT) 22083  
DALLAS ONE DEPARTURE

AT-9209 (FAA)

GRAND PRAIRIE MUNI (GPM)  
GRAND PRAIRIE, TEXAS

**LITTLE ROCK**  
113.9 LIT  
Chan 86  
N34°40.66'-W92°10.83'  
L-18, H-6

**TEXARKANA**  
116.3 TXK  
Chan 110  
N33°30.83'-W94°04.39'  
L-17, H-6

**SULPHUR SPRINGS**  
109.0 SLR  
Chan 27

**BONHAM**  
114.6 BYP  
Chan 93

**MAVERICK**  
113.1 TTT  
Chan 78  
N32°52.15'  
W97°02.43'

**BELCHER**  
117.4 EIC  
Chan 121  
N32°46.28'-W93°48.60'  
L-17, H-6

**GREGG COUNTY**  
112.9 GGG  
Chan 76

# DALLAS ONE DEPARTURE



## DEPARTURE ROUTE DESCRIPTION

TAKEOFF RUNWAY 18: Climb on heading 192° to 2500 before proceeding on course.

When entering controlled airspace, fly assigned heading and altitude, for vector to appropriate route.

BELCHER TRANSITION (DALL1.EIC): From over TTT VOR/DME on TTT R-094 to POTEN, then on EIC R-259 to EIC VORTAC.

LITTLE ROCK TRANSITION (DALL1.LIT): From over TTT VOR/DME on TTT R-064 to ORTRO, then on LIT R-235 to LIT VORTAC.

SOLDO TRANSITION (DALL1.SOLDO): From over TTT VOR/DME on TTT R-084 to SOLDO.

TEXARKANA TRANSITION (DALL1.TXK): From over TTT VOR/DME on TTT R-074 to SHERO, then on TXK R-244 to TXK VORTAC.

SC-2, 16 JUN 2022 to 14 JUL 2022

SC-2, 16 JUN 2022 to 14 JUL 2022