



APP CRS	Rwy Idg	<b>4001</b>
<b>358°</b>	TDZE	<b>588</b>
	Apt Elev	<b>588</b>

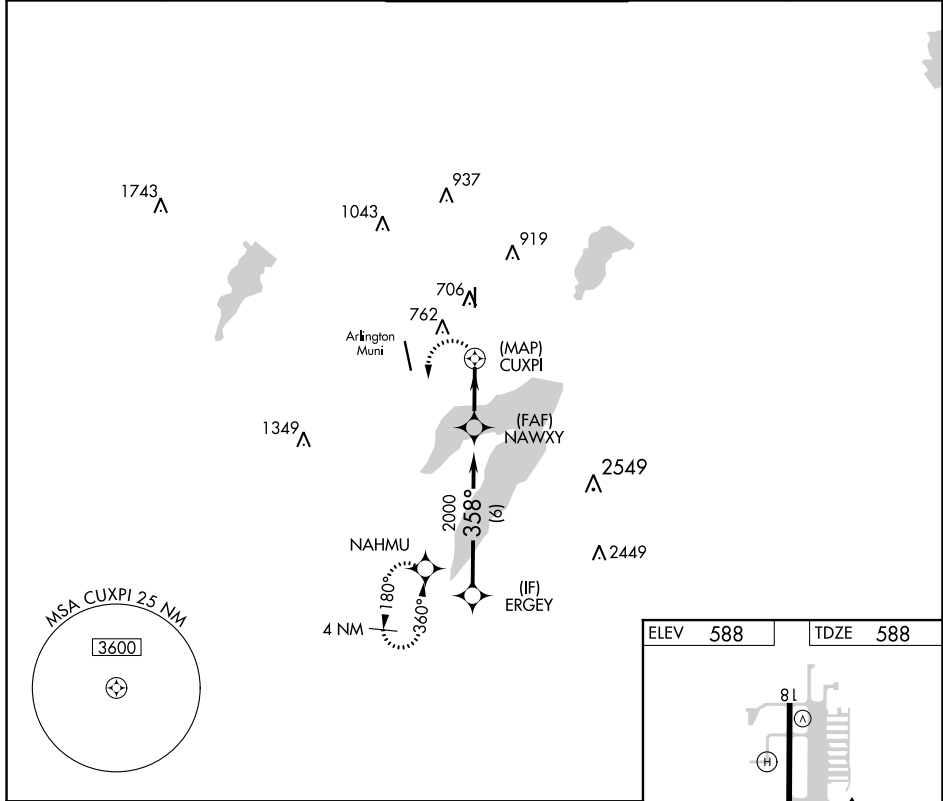
AL-9209 (FAA)

# RNAV (GPS) RWY 36

GRAND PRAIRIE MUNI (GPM)

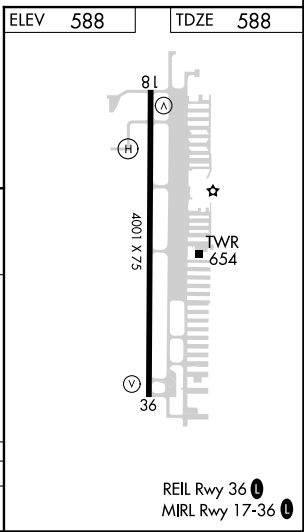
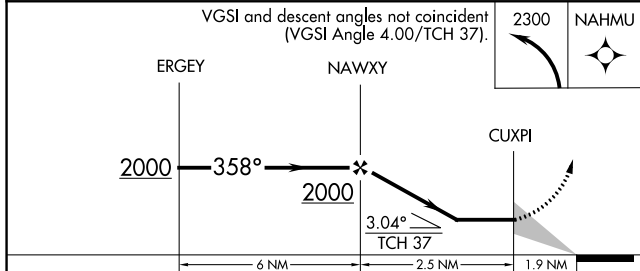
RADAR required. RNP APCH - GPS.		MISSED APPROACH: Climbing left turn to 2300 direct NAHMU and hold.	
 			

AWOS-3P <b>118.475</b>	REGIONAL APP CON <b>135.975 379.9</b>	GRAND PRAIRIE TOWER * <b>128.55 (CTAF) 0</b>	GND CON <b>121.15</b>	UNICOM <b>123.075</b>
---------------------------	--	---	--------------------------	--------------------------



SC-2, 16 JUN 2022 to 14 JUL 2022

SC-2, 16 JUN 2022 to 14 JUL 2022



CATEGORY	A	B	C	D
LNAV MDA	1020-2½ 432 (500-2½)		NA	

REIL Rwy 36 0  
MIRL Rwy 17-36 0