

RNAV (GPS) RWY 32

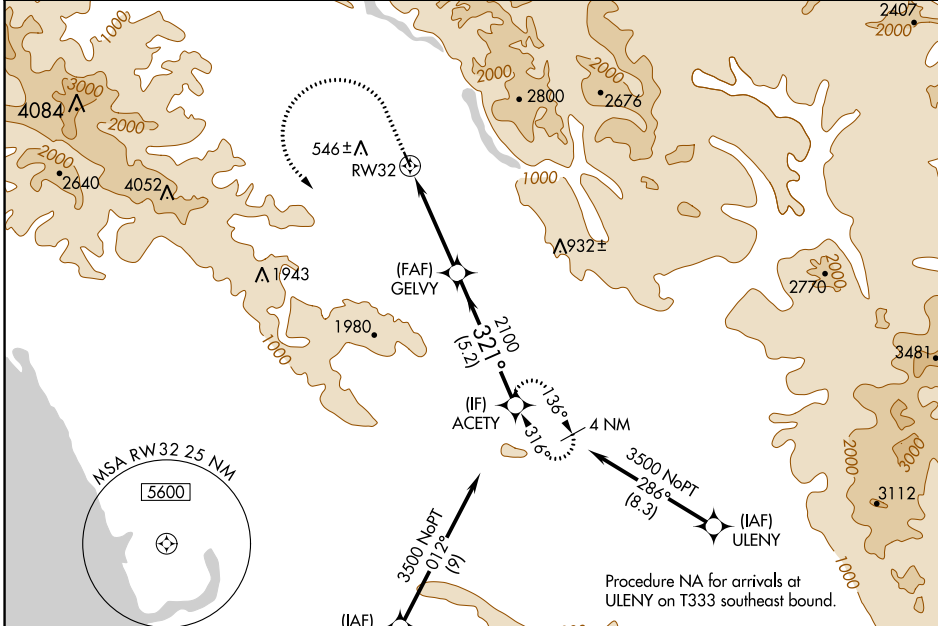
SAN MARTIN (E16)

APP CRS	Rwy Idg	3095
321°	TDZE	284
	Apt Elev	284

RNP APCH.
 ⚠ Circling NA southwest of Rwy 14-32. Rwy 32 helicopter visibility reduction below ¾ SM NA.

MISSED APPROACH: Climb to 1700 then climbing left turn to 3500 direct ACETY and hold.

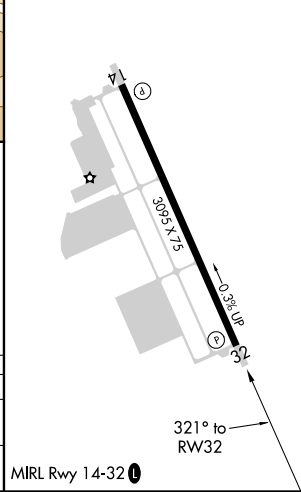
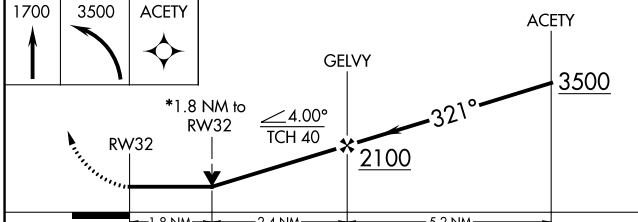
AWOS-3P 118.35	NORCAL APP CON 124.525 348.675	UNICOM 122.7 (CTAF) 0
--------------------------	--	---------------------------------



Procedure NA for arrival on SNS VORTAC airway radials 264 CW 068.

Procedure NA for arrivals at ULENY on T333 southeast bound.

ELEV 284	TDZE 284
----------	----------



CATEGORY	A	B	C	D
LNAV MDA	1060-1 776 (800-1)	1060-1¼ 776 (800-1¼)	NA	
CIRCLING	1060-1 776 (800-1)	1160-1¼ 876 (900-1¼)	NA	

SW-2, 16 JUN 2022 to 14 JUL 2022

SW-2, 16 JUN 2022 to 14 JUL 2022