

WAAS CH 48937 W31A	APP CRS 304°	Rwy Idg 3300 TDZE 992 Apt Elev 993
---------------------------------	------------------------	---

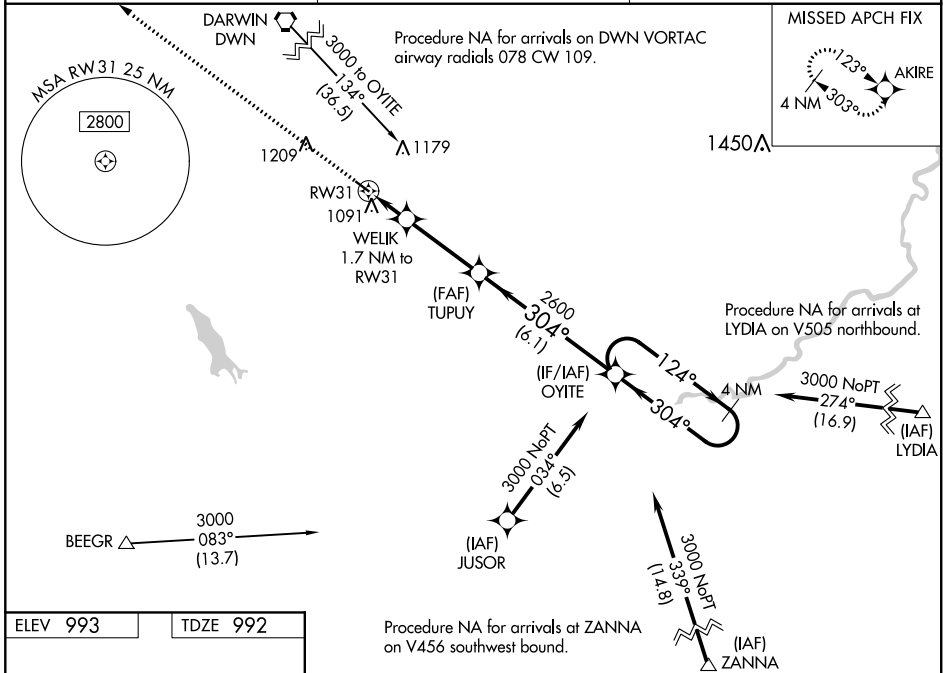
RNAV (GPS) RWY 31

GLENCOE MUNI (GYL)

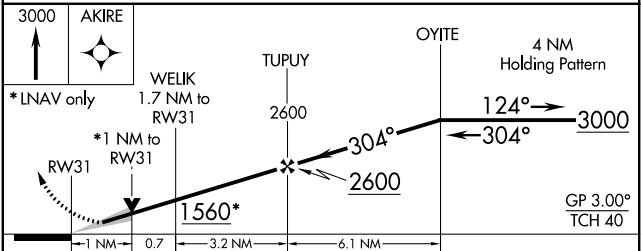
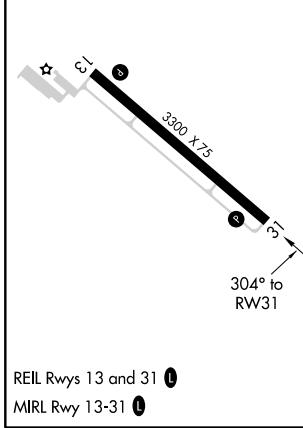
⚠ Baro-VNAV NA when using Hutchinson altimeter setting. For uncompensated Baro-VNAV systems, LNAV/VNAV NA below -16°C (4°F) or above 54°C (130°F). DME DME/RNP-0.3 NA. VDP NA with Hutchinson altimeter setting. When local altimeter setting not received, use Hutchinson altimeter setting and increase all DA 43 feet and all MDA 60 feet, increase LPV and LNAV/VNAV Cat A/B visibility 1/8 mile.

MISSED APPROACH: Climb to 3000 direct AKIRE and hold.

AWOS-3 119.625	MINNEAPOLIS APP CON 134.7 284.7	UNICOM 122.8 (CTAF)
--------------------------	---	-------------------------------



ELEV 993	TDZE 992
----------	----------



CATEGORY	A	B	C	D
LPV DA	1242-7/8	250 (300-7/8)		NA
LNAV/VNAV DA	1253-7/8	261 (300-7/8)		NA
LNAV MDA	1360-1	368 (400-1)		NA
C CIRCLING	1420-1 427 (500-1)	1480-1 487 (500-1)		NA

NC-1, 16 JUN 2022 to 14 JUL 2022

NC-1, 16 JUN 2022 to 14 JUL 2022