

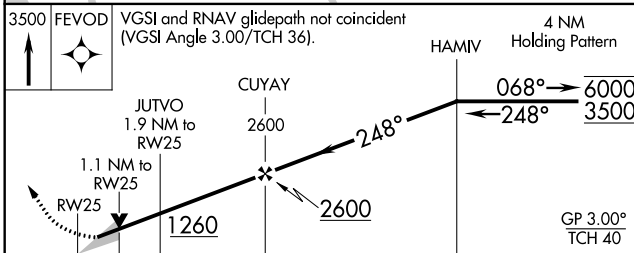
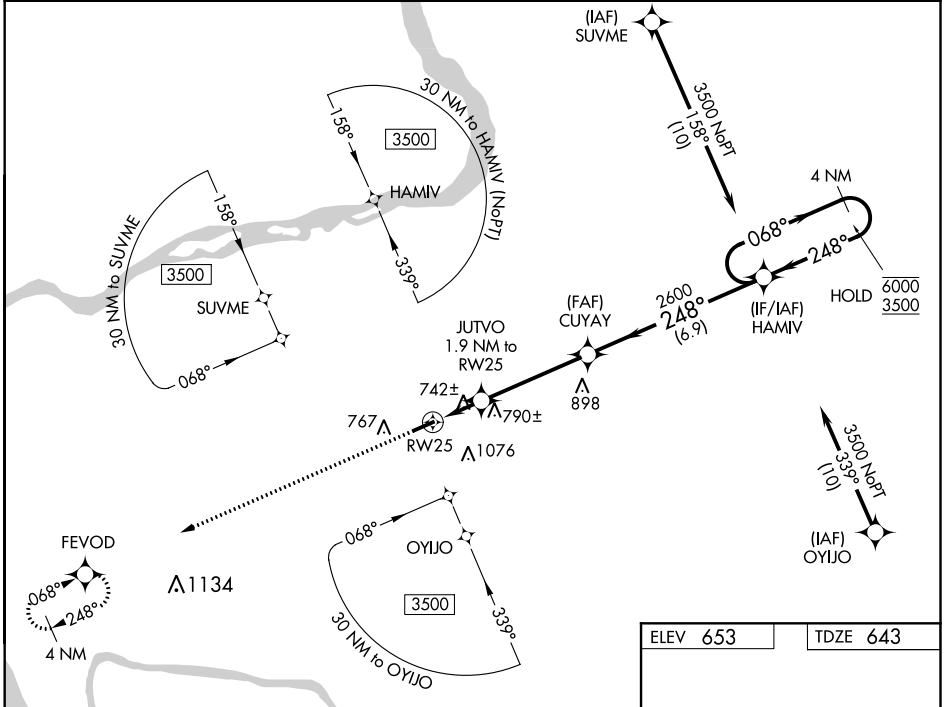
WAAS CH <b>86631</b> <b>W25A</b>	APP CRS <b>248°</b>	Rwy Idg TDZE Apt Elev	<b>5001</b> <b>643</b> <b>653</b>
--	------------------------	-----------------------------	---

# RNAV (GPS) RWY 25

MARION-CRITTENDEN COUNTY JAMES C JOHNSON RGNL (GDA)

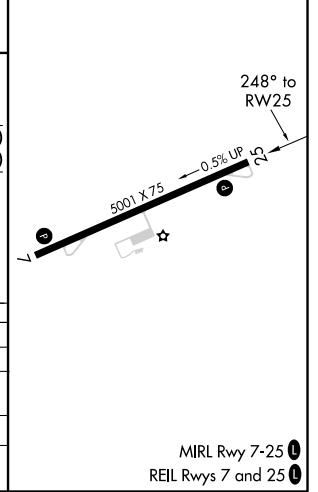
RNP APCH - GPS.	MISSED APPROACH: Climb to 3500 direct FEVOD and hold.
-----------------	---

AWOS-3P <b>118.15</b>	MEMPHIS CENTER <b>133.65 292.15</b>	CTAF <b>122.9</b>
--------------------------	--	----------------------



ELEV 653	TDZE 643
----------	----------

3500 FEVOD	VGSI and RNAV glidepath not coincident (VGSI Angle 3.00/TCH 36).			
↑	4 NM Holding Pattern			
JUTVO 1.9 NM to RW25	CUYAY 2600	HAMIV 068° → 6000		← 248° 3500
1.1 NM to RW25	1260	2600	GP 3.00° TCH 40	
1.1	0.8	4.2 NM	6.9 NM	
CATEGORY	A	B	C	D
LPV DA		893-1	250 (300-1)	
LNAV/VNAV DA		945-1	302 (300-1)	
LNAV MDA		1000-1	357 (400-1)	
<b>CIRCLING</b>	1180-1 527 (600-1)	1360-1 707 (800-1)	1380-2 727 (800-2)	1380-2 ¼ 727 (800-2 ¼)



SE-1, 16 JUN 2022 to 14 JUL 2022

SE-1, 16 JUN 2022 to 14 JUL 2022

MIRL Rwy 7-25  
REIL Rwy 7 and 25