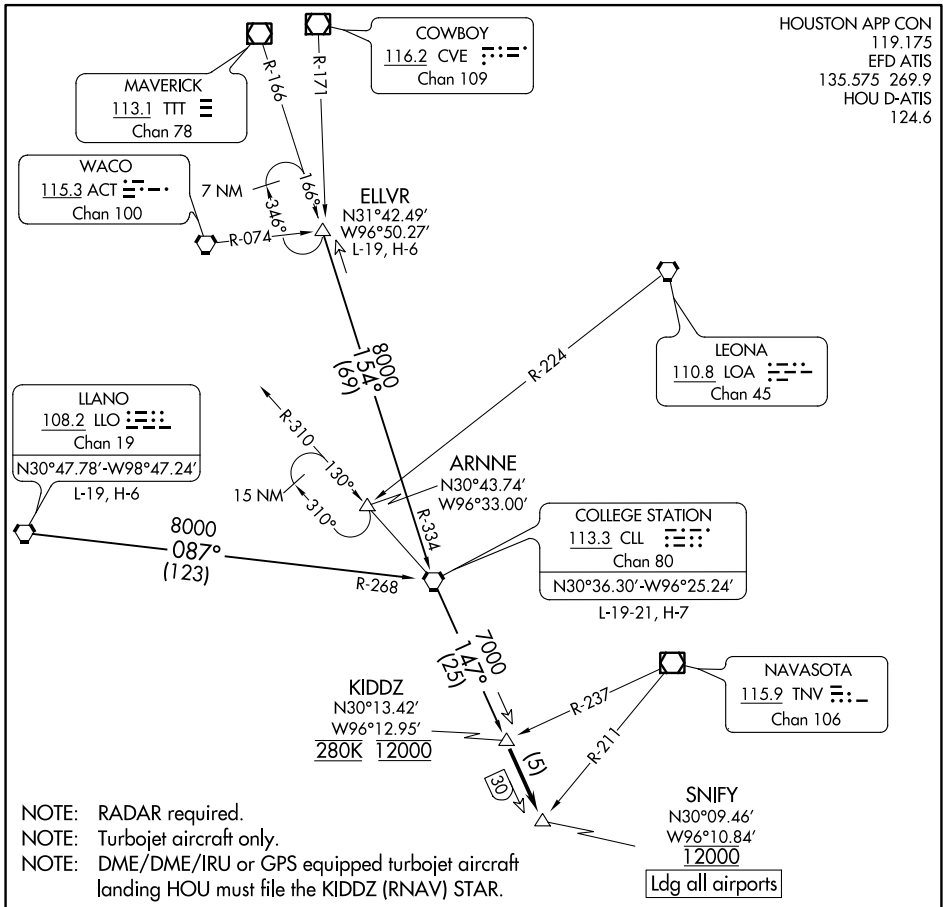


SNIFY ONE ARRIVAL

HOUSTON, TEXAS

HOUSTON APP CON
 119.175
 EFD ATIS
 135.575 269.9
 HOU D-ATIS
 124.6



SC-5, 11 AUG 2022 to 08 SEP 2022

SC-5, 11 AUG 2022 to 08 SEP 2022

ARRIVAL ROUTE DESCRIPTION

COLLEGE STATION TRANSITION (CLL.SNIFY1): From

over CLL VORTAC on CLL R-147 to KIDDZ. Thence....

ELLVR TRANSITION (ELLVR.SNIFY1): From over ELLVR

on CLL R-334 to CLL VORTAC, then on CLL R-147 to

KIDDZ. Thence....

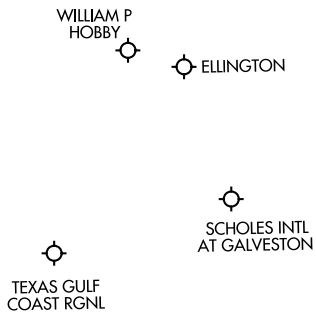
LLANO TRANSITION (LLO.SNIFY1): From over LLO

VORTAC on LLO R-087 and CLL R-268 to CLL VORTAC,

then on CLL R-147 to KIDDZ. Thence....

...from KIDDZ on CLL R-147 to cross SNIFY at 12000.

Expect vectors to final approach course at or prior to SNIFY.



NOTE: Chart not to scale.

SNIFY ONE ARRIVAL

HOUSTON, TEXAS