

# DREAM SIX DEPARTURE (DREAM6 • DREAM)

NELLIS AFB (KLSV)

LAS VEGAS, NEVADA

ATIS 270.1  
 CLNC DEL  
 120.9 289.4  
 GND CON  
 121.8 275.8  
 NELLIS TOWER  
 132.55 327.0  
 NELLIS DEP CON  
 135.1 385.4

SHL-227 [USAF]

Rwy	Knots	60	120	180	240	300	360
* 3 L (a)	V/V(fpm)	269	538	807	1076	1345	1614
* 3 R (b)	V/V(fpm)	229	458	687	916	1145	1374
† 3 L (c)	V/V(fpm)	498	996	1494	1992	2490	2988
† 3 R (c)	V/V(fpm)	496	992	1488	1984	2480	2976
* 21 L (d)	V/V(fpm)	389	778	1167	1556	1945	2334
* 21 R (d)	V/V(fpm)	395	790	1185	1580	1975	2370
† 21 L (c)	V/V(fpm)	453	906	1359	1812	2265	2718
† 21 R (c)	V/V(fpm)	457	914	1371	1828	2285	2742

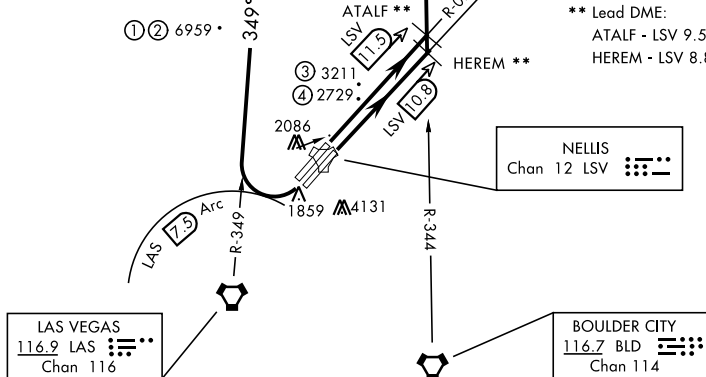
**NOT FOR CIVIL USE**

- \* Minimum † ATC Climb Rate
- (a) to 3400
- (b) to 3000
- (c) to 17,000
- (d) to 8500

CAUTION: If unable to comply with restrictions advise ATC prior to departure.

- ① 12.24 NM from Rwy 21R
- ② 12.40 NM from Rwy 21L
- ③ 5.70 NM from Rwy 3L
- ④ 4.81 NM from Rwy 3R

\*\* Lead DME:  
 ATALF - LSV 9.5  
 HEREM - LSV 8.8



## DEPARTURE ROUTE DESCRIPTION

- TAKE-OFF RWY 3L:** Fly runway heading to intercept the LSV TACAN R-028 then direct ATALF, intercept the BLD VORTAC R-344 then direct JUNNO, cross JUNNO at or above 17,000, then via assigned route.
  - TAKE-OFF RWY 3R:** Fly runway heading to intercept the LSV TACAN R-031 then direct HEREM, intercept the BLD VORTAC R-344 then direct JUNNO, cross JUNNO at or above 17,000, then via assigned route.
  - TAKE-OFF RWY 21L/R:** Turn right to intercept LAS VORTAC R-349 outbound. Remain North of LAS 7.5 DME turning Northbound. Intercept LAS R-349 between 5000 and 6000, do not proceed West of LAS R-349. Cross MINTT at above 17,000, then via assigned route.
- NOISE ABATEMENT PROCEDURES:** Fly IAW Nellis Noise Abatement instructions published in AP/1.

# DREAM SIX DEPARTURE (DREAM6 • DREAM)

Amdt 5 29MAR18

LAS VEGAS, NEVADA

NELLIS AFB (KLSV)

SW-4, 11 AUG 2022 to 08 SEP 2022

SW-4, 11 AUG 2022 to 08 SEP 2022