

LAS VEGAS, NEVADA

HI-ILS or LOC Z RWY 21L

LOC I-DIQ 109.1	APCH CRS 209°	Rwy ldg 21L	21R
		TDZE 10,051	10,120
		Arprt Elev 1865	1869

AL-227 (USAF)

NELLIS AFB (KLSV)

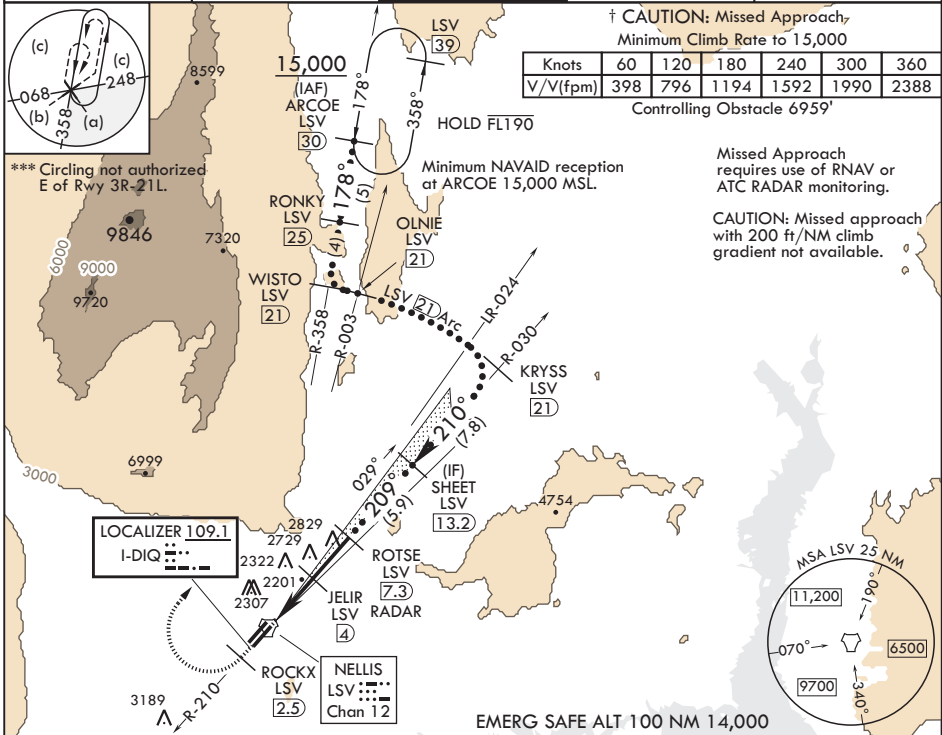
DME or RADAR required.

⚠ * When ALS inop, increase RVR to 40, vis to 3/4 mile.
** When ALS inop, increase vis to 1 3/4 miles.

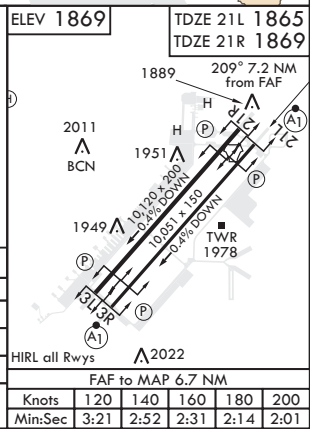


† MISSED APPROACH: Climb to 15,000, intercept LSV TACAN R-210 to 2.5 DME (ROCKX), then climbing right turn heading 028° to join LSV R-358 to ARCOE and hold, continue climb in hold to 15,000. Missed approach not for civil use.

ATIS 270.1	APP CON 124.95 273.55	TOWER 132.55 327.0	GND CON 121.8 275.8	CLNC DEL 120.9 289.4
----------------------	---------------------------------	------------------------------	-------------------------------	--------------------------------



15,000 LSV R-210	ROCKX LSV 2.5	VGSI and ILS glidepath not coincident (VGSI Angle 3.00/TCH 54).	Intcp Lczt KRYSS R-030	OLNIE R-003	WISTO R-358
TACAN	SESDE 1.6	JELIR 4	ROTSE 7.3	SHEET 13.2	GS 3.00° TCH 50
0.4	3.4 NM	3.3 NM			
CATEGORY	C	D	E		
S-ILS 21L*	2065-24	200	(200-1/2)		
S-LOC 21L**	2460-1 1/4	595	(600-1 1/4)		
SIDESTEP 21R	2500-1 1/4	631	(700-1 1/4)		
Ⓢ CIRCLING***	2620-2 1/4 751 (800-2 1/4)	2840-3 971 (1000-3)	3040-3 1171 (1200-3)		



LAS VEGAS, NEVADA

36°14'N - 115°02'W

NELLIS AFB (KLSV)

Amdt 9 22APR21

HI-ILS or LOC Z RWY 21L

SW-4, 11 AUG 2022 to 08 SEP 2022

SW-4, 11 AUG 2022 to 08 SEP 2022