

# HI-TACAN Y RWY 21L

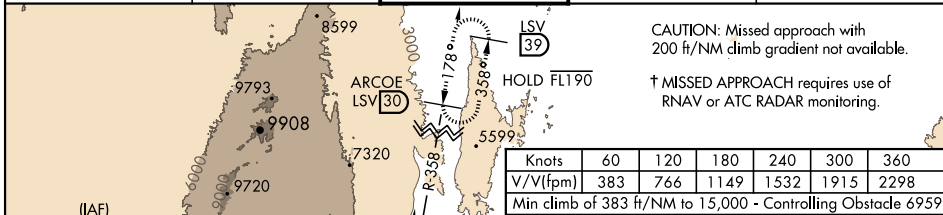
TACAN LSV Chan <b>12</b>	APCH CRS <b>210°</b>	Rwy ldg 21L <b>10,051</b> TDZE <b>1865</b> Arpt Elev <b>1869</b>	Rwy ldg 21R <b>10,120</b> TDZE <b>1869</b>	AL-227 [USAF]	NELLIS AFB (KLSV)
--------------------------	----------------------	--	---	---------------	-------------------

\* When ALS inop, increase CAT CDE vis to 1 3/4 miles.  
 \*\* Circling not authorized E of Rwy 3R-21L.

ALSF-1

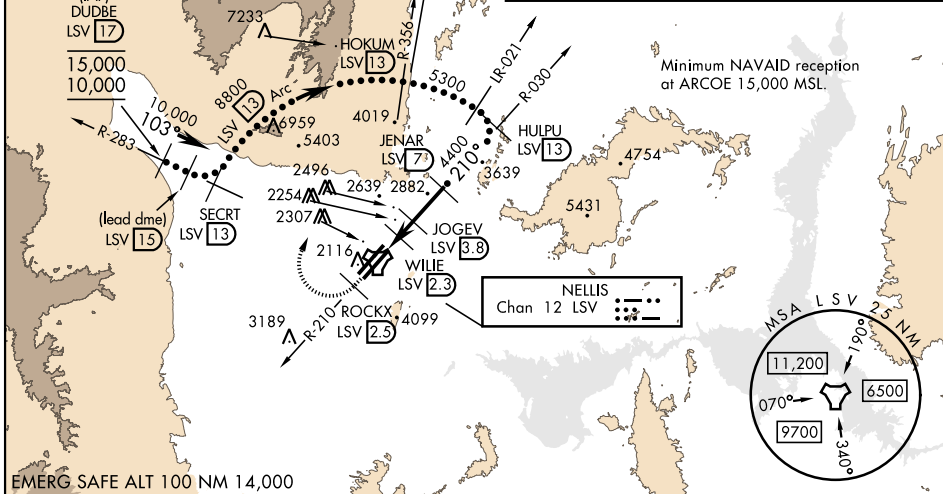
† MISSED APPROACH: Climb to 15,000, intercept LSV TACAN R-210 to 2.5 DME (ROCKX), then climbing right turn heading 028° to join LSV R-358 and HOLD and hold.  
 Missed approach not for civil use.

ATIS <b>270.1</b>	APP CON <b>124.95 273.55</b>	TOWER <b>132.55 327.0</b>	GND CON <b>121.8 275.8</b>	CLNC DEL <b>120.9 289.4</b>
-------------------	------------------------------	---------------------------	----------------------------	-----------------------------



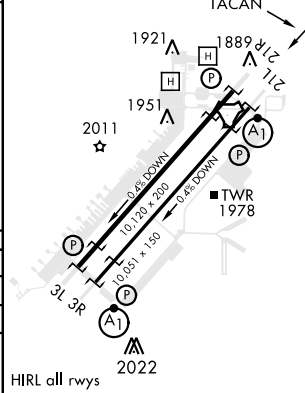
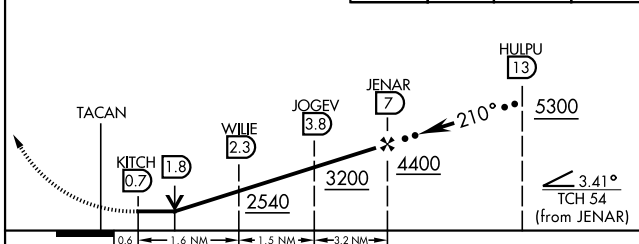
CAUTION: Missed approach with 200 ft/NM climb gradient not available.

† MISSED APPROACH requires use of RNAV or ATC RADAR monitoring.



Minimum NAVAID reception at ARCOE 15,000 MSL.

VGSI and descent angles not coincident (VGSI Angle 3.00/TCH 54).	15,000 LSV R-210	ROCKX LSV 2.5	hdg 028°	ARCOE R-358 30	ELEV 1869	TDZE 21L 1865	TDZE 21R 1869
--	------------------	---------------	----------	----------------	-----------	---------------	---------------



CATEGORY	C	D	E
S-21L *	2460-1 1/4	595 (600-1 1/4)	
SIDESTEP 21R	2460-1	591 (600-1)	
CIRCLING **	2620-2 1/4 751 (800-2 1/4)	2840-3 971 (1000-3)	3040-3 1171 (1200-3)

# HI-TACAN Y RWY 21L

SW-4, 11 AUG 2022 to 08 SEP 2022

SW-4, 11 AUG 2022 to 08 SEP 2022