

# HI-TACAN Z RWY 21L

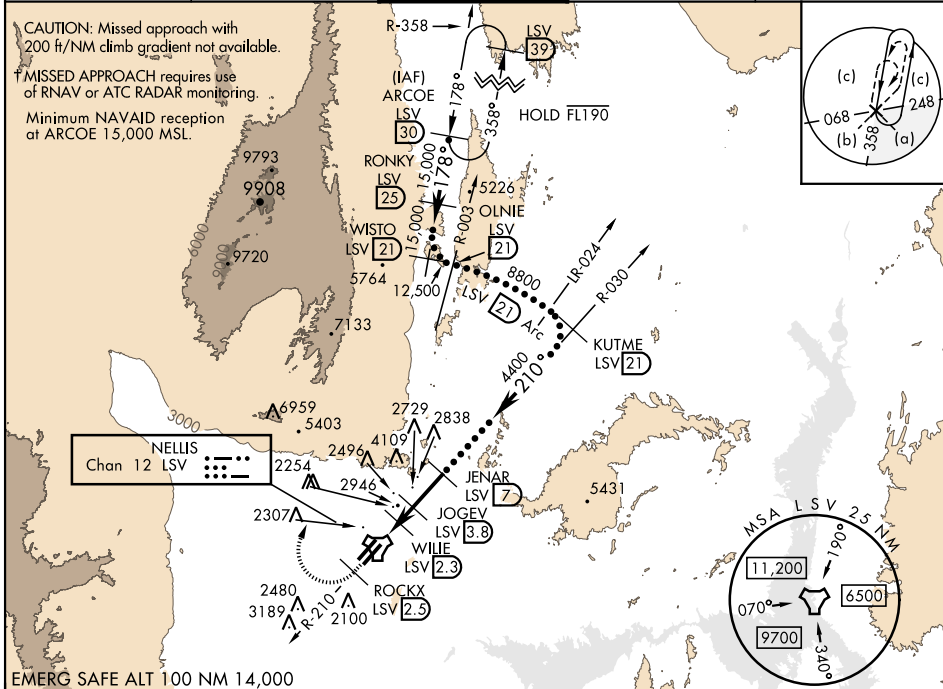
TACAN LSV Chan 12	APCH CRS 210°	Rwy ldg 21L 10,051 TDZE 1865 Arprt Elev 1869	Rwy ldg 21R 10,120 TDZE 1869	AL-227 [USAF]	NELLIS AFB (KLSV)
-------------------	---------------	--	------------------------------	---------------	-------------------

▼\* When ALS inop, increase CAT CDE vis to 1 3/4 miles.  
 \*\* Circling not authorized E of Rwy 3R-21L.

ALSF-1

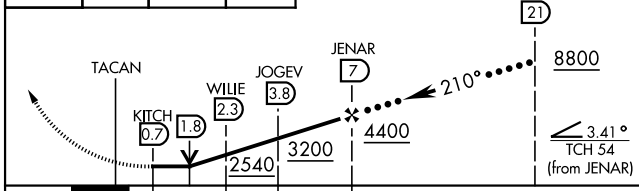
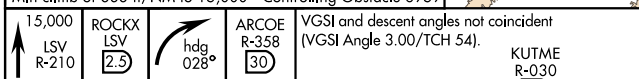
† MISSED APPROACH: Climb to 15,000, intercept LSV TACAN R-210 to 2.5 DME (ROCKX), then climbing right turn heading 028° to join LSV R-358 to ARCOE and hold. Missed approach not for civil use.

ATIS 270.1	APP CON 124.95 273.55	TOWER 132.55 327.0	GND CON 121.8 275.8	CLNC DEL 120.9 289.4
------------	-----------------------	--------------------	---------------------	----------------------



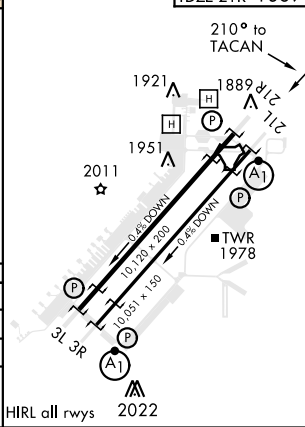
EMERG SAFE ALT 100 NM 14,000

Knots	60	120	180	240	300	360
V/V(fpm)	383	766	1149	1532	1915	2298
Min climb of 383 ft/NM to 15,000 - Controlling Obstacle 6959						



CATEGORY	C	D	E
S-21L *	2460-1 1/4	595 (600-1 1/4)	
SIDESTEP 21R	2460-1	591 (600-1)	
CIRCLING **	2620-2 1/4 751 (800-2 1/4)	2840-3 971 (1000-3)	3040-3 1171 (1200-3)

ELEV 1869	TDZE 21L 1865
	TDZE 21R 1869



# HI-TACAN Z RWY 21L

SW-4, 11 AUG 2022 to 08 SEP 2022

SW-4, 11 AUG 2022 to 08 SEP 2022