

# LOC Y RWY 21L

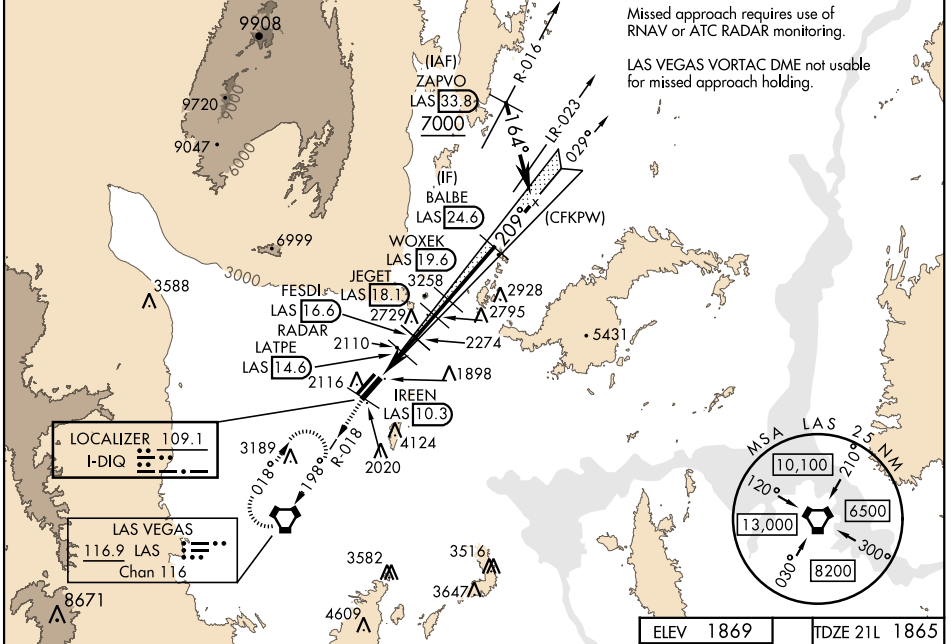
LOC I-DIQ <b>109.1</b>	APCH CRS <b>209°</b>	Rwy ldg 21L <b>10,051</b> TDZE <b>1865</b> Arpt Elev <b>1869</b>	Rwy ldg 21R <b>10,120</b> TDZE <b>1869</b>	AL-227 [USAF]	NELLIS AFB (KLSV)
---------------------------	-------------------------	--	--	---------------	-------------------

RADAR or DME required.		ALSF-1 	MISSED APPROACH: Climb to 8000, intercept the LAS VORTAC R-018 to 10.3 DME (IREEN), then to LAS and hold.
<p>* When ALS inop, increase vis to 1 1/2 miles. ** Circling not authorized E of Rwy 3R-21L.</p>			

ATIS <b>270.1</b>	APP CON <b>124.95 273.55</b>	TOWER <b>132.55 327.0</b>	GND CON <b>121.8 275.8</b>	CLNC DEL <b>120.9 289.4</b>
----------------------	---------------------------------	------------------------------	-------------------------------	--------------------------------

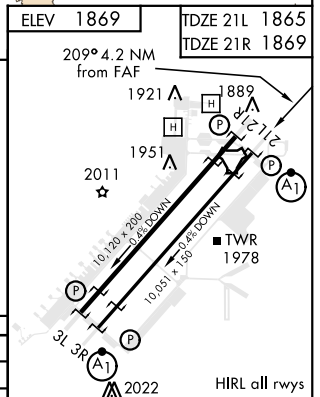
Knots	60	120	180	240	300	360
V/V(fpm)	450	900	1350	1800	2250	2700
ATC climb of 450 ft/NM to 8000						

## FOR USE BY NELLIS AFB ASSIGNED AIRCRAFT ONLY



EMERG SAFE ALT 100 NM 14,000.

8000	IREEN 10.3	LAS	VGSI and descent angles not coincident (VGSI Angle 3.00/TCH 54).
LAS R-018			
VORTAC	ENIYO 12.4	ENIYO 13.4	LATPE 14.6
			RADAR
			FESDI 16.6
			JEGET 18.1
			WOXEK 19.6
			BALBE 24.6
			5600
			3.41° TCH 54 (from FESDI)
	0.4	2.2 NM	2 NM



CATEGORY	C	D	E
S-21L *	2360/50	495 (500-1)	
SIDESTEP 21R	2360-1 3/8	491 (600-1 3/8)	
CIRCLING **	2620-2 1/4 751 (800-2 1/4)	2840-3 971 (1000-3)	3040-3 1171 (1200-3)

FAF to MAP 4.2 NM					
Knots	60	90	120	150	180
Min:Sec	4:12	2:48	2:06	1:41	1:24

# LOC Y RWY 21L

SW-4, 11 AUG 2022 to 08 SEP 2022

SW-4, 11 AUG 2022 to 08 SEP 2022