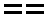


ATIS 270.1
 CLNC DEL
 120.9 289.4
 GND CON
 121.8 275.8
 NELLIS TOWER
 132.55 327.0
 NELLIS DEP CON
 135.1 385.4
 LOS ANGELES CENTER
 124.2 134.65 307.9 343.6

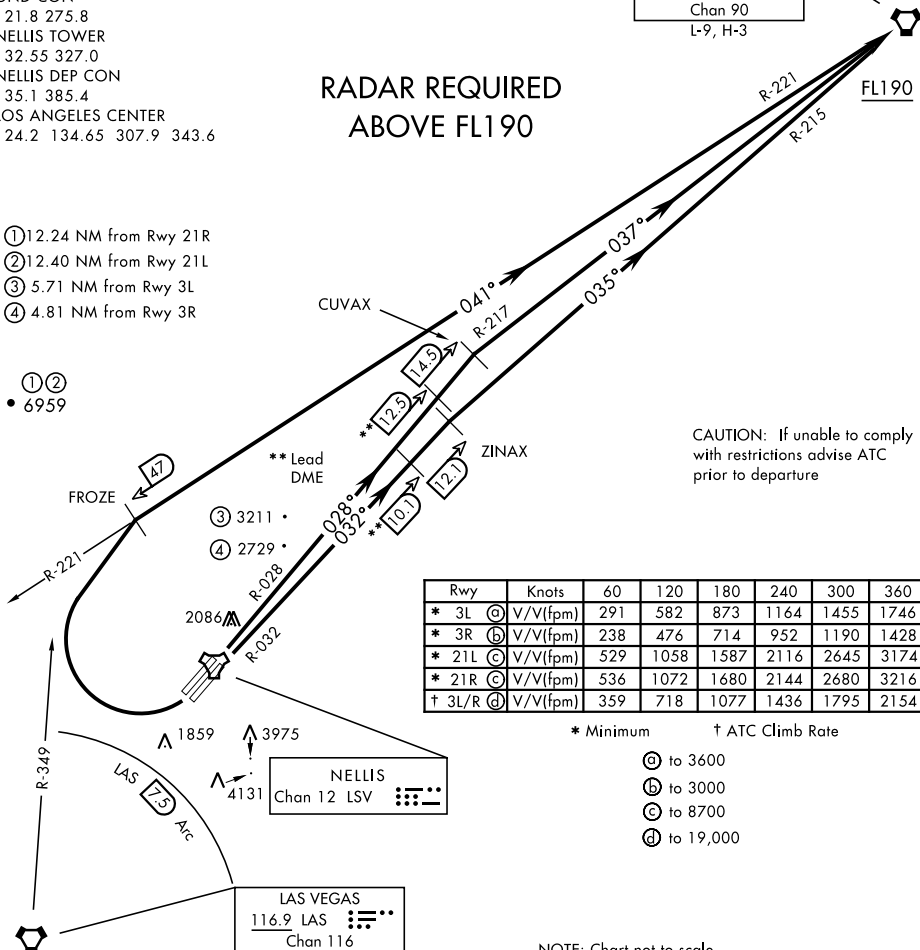
SHL-227 [USAF]

MORMON MESA
 114.3 MMM 
 Chan 90
 L-9, H-3

RADAR REQUIRED ABOVE FL190

- ① 12.24 NM from Rwy 21R
- ② 12.40 NM from Rwy 21L
- ③ 5.71 NM from Rwy 3L
- ④ 4.81 NM from Rwy 3R

① ②
 • 6959



CAUTION: If unable to comply with restrictions advise ATC prior to departure

Rwy	Knots	60	120	180	240	300	360
* 3L ③	V/V(fpm)	291	582	873	1164	1455	1746
* 3R ⑥	V/V(fpm)	238	476	714	952	1190	1428
* 21L ③	V/V(fpm)	529	1058	1587	2116	2645	3174
* 21R ③	V/V(fpm)	536	1072	1680	2144	2680	3216
† 3L/R ④	V/V(fpm)	359	718	1077	1436	1795	2154

* Minimum † ATC Climb Rate

- ③ to 3600
- ⑥ to 3000
- ③ to 8700
- ④ to 19,000

NOTE: Chart not to scale

DEPARTURE ROUTE DESCRIPTION

TAKE-OFF RWY 3L: Fly runway heading to intercept LSV TACAN R-028 then direct CUVAX, intercept the MMM VORTAC R-217 then direct MMM climbing to FL190 or as assigned, then via assigned route.

TAKE-OFF RWY 3R: Fly runway heading to intercept LSV TACAN R-032 then direct ZINAX, intercept the MMM VORTAC R-215 then direct MMM climbing to FL190 or as assigned, then via assigned route.

TAKE-OFF RWY 21L/R: Turn right to intercept MMM VORTAC R-221 prior to MMM 47 DME (FROZE), remain north of the LAS VORTAC 7.5 DME, remain East of LAS R-349, intercept MMM R-221 then direct MMM, cross MMM at or above FL190 then via assigned route.

NOISE ABATEMENT PROCEDURES: Fly IAW Nellis Noise Abatement instructions published in AP/1.

SW-4, 11 AUG 2022 to 08 SEP 2022

SW-4, 11 AUG 2022 to 08 SEP 2022